

Plotted: 30 September, 2021 1:46:29 PM File Name: J:\9985DCC - Construction Certificate Approval Plans\PK12 WESTERN PRECINCTS\12 - Precinct 7\9985-12-CC-12002.dwg

LEGEND			
DESCRIPTION	PROPOSED	EXISTING	FUTURE
EXTENT OF WORKS	////		
KERB & GUTTER	K&G		
ROLL KERB	RK		
PRAM RAMP			
DRAINAGE LINE, PIT & EASEMENT			
DRAINAGE LINE & PIT			
SUBSOIL	SS-SS	SS-SS	
HEADWALL			
CONTOURS	46.0	47.0	
KERB RETURN No	KR		
ELECTRICITY, POWER POLE	E-E-E-E	EC-EC-EC	
TELECOM, BOX	T-T-T-T	ET-ET-ET-ET	
WATER, STOP VALVE, HYDRANT	W-W-W-W	EW-SV	
SEWER, MANHOLE	S-S-S-S	ES-SM	
GAS	G-G-G-G	EG-EG-EG	
STREET NAME SIGNS	SP		
STATE SURVEY MARKS			
STAGE BOUNDARY	=====		
EXISTING NATIVE VEGETATION			
NATIVE VEGETATION RETENTION			
INDICATIVE DRIVEWAYS LOCATIONS			
TREES TO BE REMOVED			
TREES TO BE RETAINED			



UTILITIES SHOWN ARE DIAGRAMMATIC ONLY. CONTRACTORS ARE RESPONSIBLE TO LOCATE AND AVOID DAMAGE TO THEM AS SPECIFIED BY EACH UTILITIES EXCAVATION GUIDE LINES & STANDARDS.

NOTE: UTILITIES SHOWN MAY NOT INCLUDE ALL SERVICES WITHIN THE LIMIT OF WORKS

CIVIL PLAN INDEX		
PLAN NO.	PLAN NAME	REV
9985-12-CC12001	COVER SHEET	A
9985-12-CC12002	LEGEND & INDEX	C
9985-12-CC12003	GENERAL NOTES	A
9985-12-CC12004	OVERALL SITE PLAN	A
9985-12-CC12005	SETOUT PLAN	A
9985-12-CC12006	PAVEMENT PLAN	A
9985-12-CC12007	TYPICAL SECTIONS	A
-		
9985-12-CC12010	CUT & FILL PLAN	B
9985-12-CC12011	ENGINEERING PLAN SHEET 1	B
9985-12-CC12012	ENGINEERING PLAN SHEET 2	B
9985-12-CC12013	ENGINEERING PLAN SHEET 3	B
9985-12-CC12014	ENGINEERING PLAN SHEET 4	A
-		
9985-12-CC12101	ROAD LONGITUDINAL PLAN SHEET 1	A
9985-12-CC12102	ROAD LONGITUDINAL PLAN SHEET 2	B
9985-12-CC12103	ROAD LONGITUDINAL PLAN SHEET 3	A
9985-12-CC12104	ROAD LONGITUDINAL PLAN SHEET 4	A
9985-12-CC12105	ROAD LONGITUDINAL PLAN SHEET 5	A
9985-12-CC12106	ROAD LONGITUDINAL PLAN SHEET 6	A
-		
9985-12-CC12201	ROAD CROSS SECTIONS SHEET 1	A
9985-12-CC12202	ROAD CROSS SECTIONS SHEET 2	B
9985-12-CC12203	ROAD CROSS SECTIONS SHEET 3	B
9985-12-CC12204	ROAD CROSS SECTIONS SHEET 4	A
9985-12-CC12205	ROAD CROSS SECTIONS SHEET 5	B
9985-12-CC12206	ROAD CROSS SECTIONS SHEET 6	A
9985-12-CC12207	ROAD CROSS SECTIONS SHEET 7	A
9985-12-CC12208	ROAD CROSS SECTIONS SHEET 8	A
9985-12-CC12209	ROAD CROSS SECTIONS SHEET 9	A
9985-12-CC12210	ROAD CROSS SECTIONS SHEET 10	A
-		
9985-12-CC12301	KERB RETURNS SHEET 1	A
9985-12-CC12302	KERB RETURNS SHEET 2	A
9985-12-CC12303	KERB RETURNS SHEET 3	A
9985-12-CC12304	KERB RETURNS SHEET 4	A
9985-12-CC12305	KERB RETURNS SHEET 5	A
9985-12-CC12306	KERB RETURNS SHEET 6	A
9985-12-CC12307	KERB RETURNS SHEET 7	A
-		
9985-12-CC12400	OVERALL CATCHMENT PLAN	B
9985-12-CC12401	CATCHMENT PLAN	B
9985-12-CC12402	PIT SCHEDULE	B
9985-12-CC12403	HYDROLOGY DRAINAGE CALCULATION SHEET 1	B
9985-12-CC12404	HYDROLOGY DRAINAGE CALCULATION SHEET 2	B
9985-12-CC12405	HYDROLOGY DRAINAGE CALCULATION SHEET 3	B
9985-12-CC12406	HYDROLOGY DRAINAGE CALCULATION SHEET 4	B
9985-12-CC12407	HYDROLOGY DRAINAGE CALCULATION SHEET 5	B
9985-12-CC12408	HYDROLOGY DRAINAGE CALCULATION SHEET 6	B
9985-12-CC12409	HYDROLOGY DRAINAGE CALCULATION SHEET 7	B
9985-12-CC12410	HYDROLOGY DRAINAGE CALCULATION SHEET 8	B
9985-12-CC12411	HYDROLOGY DRAINAGE CALCULATION SHEET 9	B
9985-12-CC12412	HYDROLOGY DRAINAGE CALCULATION SHEET 10	B
-		
9985-12-CC12421	LONGITUDINAL DRAINAGE SHEET 1	B
9985-12-CC12422	LONGITUDINAL DRAINAGE SHEET 2	B
9985-12-CC12423	LONGITUDINAL DRAINAGE SHEET 3	B
9985-12-CC12424	LONGITUDINAL DRAINAGE SHEET 4	B
9985-12-CC12425	LONGITUDINAL DRAINAGE SHEET 5	B
9985-12-CC12426	LONGITUDINAL DRAINAGE SHEET 6	A
9985-12-CC12427	LONGITUDINAL DRAINAGE SHEET 7	B
9985-12-CC12428	LONGITUDINAL DRAINAGE SHEET 8	A
9985-12-CC12429	LONGITUDINAL DRAINAGE SHEET 9	B
9985-12-CC12430	LONGITUDINAL DRAINAGE SHEET 10	A

CIVIL PLAN INDEX		
PLAN NO.	PLAN NAME	REV
9985-12-CC12431	LONGITUDINAL DRAINAGE SHEET 11	B
9985-12-CC12432	LONGITUDINAL DRAINAGE SHEET 12	B
9985-12-CC12433	LONGITUDINAL DRAINAGE SHEET 13	B
-		
9985-12-CC12450	SPECIAL PIT DETAILS SHEET 1	A
9985-12-CC12451	SPECIAL PIT DETAILS SHEET 2	B
9985-12-CC12452	SPECIAL PIT DETAILS SHEET 3	A
9985-12-CC12453	SPECIAL PIT DETAILS SHEET 4	A
9985-12-CC12454	SPECIAL PIT DETAILS SHEET 5	B
9985-12-CC12455	SPECIAL PIT DETAILS SHEET 6	B
9985-12-CC12456	SPECIAL PIT DETAILS SHEET 7	B
-		
9985-12-CC12500	RETAINING WALL No.2 PLAN & LONGITUDINAL SECTION SHEET 1	C
9985-12-CC12501	RETAINING WALL No.2 PLAN & LONGITUDINAL SECTION SHEET 2	B
9985-12-CC12502	RETAINING WALL No.3 PLAN & LONGITUDINAL SECTION SHEET 3	B
9985-12-CC12503	RETAINING WALL No.3 PLAN & LONGITUDINAL SECTION SHEET 4	B
-		
9985-12-CC12700	SOIL & WATER MANAGEMENT NOTES	A
9985-12-CC12701	SOIL & WATER MANAGEMENT PLAN	B
9985-12-CC12702	SEDIMENT BASIN PLAN	A
-		
9985-12-CC12801	SIGNAGE & LINE MARKING PLAN SHEET 1	B
9985-12-CC12802	SIGNAGE & LINE MARKING PLAN SHEET 2	A
9985-12-CC12803	SIGNAGE & LINE MARKING PLAN SHEET 3	A

I hereby certify that engineering works shown on this plan have been constructed generally in accordance with Construction Certificate 16632 issued by Land Development Certificates

Signature: PETER ROBERT WARWICK
Registered Land Surveyor
VINCE MORGAN SURVEYORS PTY LTD

DATE 14/11/2022 REF 20260-7

These plans are referred to in certificate no. 16632 approved by:

LDC Christopher Louis Wahbe
Registered Certifier
Registration No: BDC 3015
Categories: Certifier - Subdivision

Land Development Certificates
www.LDC.com.au

REV	DESCRIPTION	DES	DRN	CKD	APR	DATE
C	INDEX UPDATED	DG/KE	NDW	JC	MS	30/09/21
B	CC12411 & CC12412 ADDED, INDEX UPDATED	DG/KE	NDW	JC	PM	06/09/21
A	ISSUE FOR CONSTRUCTION APPROVAL	DG/KE	NDW/NF	JC	MS	11/08/21
	AMENDMENT					

J. WYNDHAM PRINCE
CONSULTING CIVIL INFRASTRUCTURE ENGINEERS & PROJECT MANAGERS

PO Box 4366 PENRITH WESTFIELD NSW 2750
P 02 4720 3300 W www.jwprince.com.au E jwp@jwprince.com.au

CLIENT:

WINTEN PROPERTY GROUP

STATUS: **ISSUE FOR CONSTRUCTION APPROVAL**

THIS DRAWING MUST NOT BE USED FOR CONSTRUCTION UNLESS SIGNED AS PART OF AN APPROVED CONSTRUCTION CERTIFICATE.

NEWPARK PRECINCT 7, STAGE 7D
LEGEND & INDEX

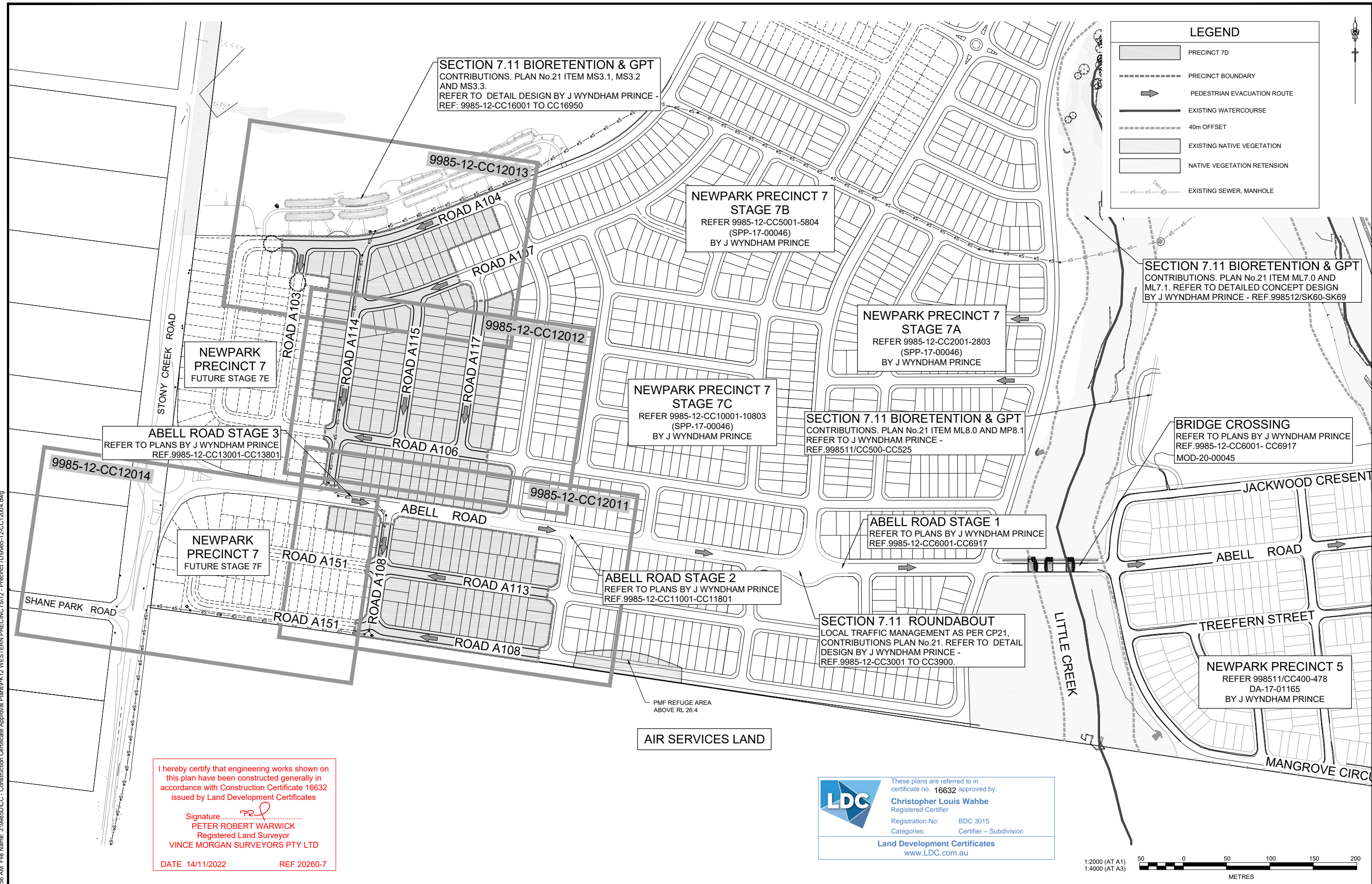
PROJECT No: **9985-12**
SHEET No: **CC12002**

AMOUNT: M.G.A.94 DATUM: A.H.D. ORIGIN: SSM 1112 PLAN No: **9985-12-CC12002**

PROJECT No: **9985-12**
SHEET No: **CC12002**

PLAN No: **9985-12-CC12002**

Plotted: 11 August, 2021, 7:21:56 AM File Name: J:\985ED\CC - Construction Certificate Approval Plans\PK12 WESTERN PRECINCTS12 - Precinct 7D\985-12-CC12004.dwg



SECTION 7.11 BIORETENTION & GPT
CONTRIBUTIONS. PLAN No.21 ITEM MS3.1, MS3.2 AND MS3.3.
REFER TO DETAIL DESIGN BY J WYNDHAM PRINCE - REF: 9985-12-CC16001 TO CC16950

NEWPARK PRECINCT 7 STAGE 7B
REFER 9985-12-CC5001-5804 (SPP-17-00046)
BY J WYNDHAM PRINCE

NEWPARK PRECINCT 7 STAGE 7A
REFER 9985-12-CC2001-2803 (SPP-17-00046)
BY J WYNDHAM PRINCE

NEWPARK PRECINCT 7 STAGE 7C
REFER 9985-12-CC10001-10803 (SPP-17-00046)
BY J WYNDHAM PRINCE

SECTION 7.11 BIORETENTION & GPT
CONTRIBUTIONS. PLAN No.21 ITEM ML8.0 AND MP8.1
REFER TO J WYNDHAM PRINCE - REF.998511/CC500-CC525

SECTION 7.11 BIORETENTION & GPT
CONTRIBUTIONS. PLAN No.21 ITEM ML7.0 AND ML7.1. REFER TO DETAILED CONCEPT DESIGN BY J WYNDHAM PRINCE - REF.998512/SK60-SK69

BRIDGE CROSSING
REFER TO PLANS BY J WYNDHAM PRINCE REF.9985-12-CC6001- CC6917
MOD-20-00045

ABELL ROAD STAGE 3
REFER TO PLANS BY J WYNDHAM PRINCE REF.9985-12-CC13001-CC13801

ABELL ROAD STAGE 1
REFER TO PLANS BY J WYNDHAM PRINCE REF.9985-12-CC6001-CC6917

ABELL ROAD STAGE 2
REFER TO PLANS BY J WYNDHAM PRINCE REF.9985-12-CC11001-CC11801

SECTION 7.11 ROUNDABOUT
LOCAL TRAFFIC MANAGEMENT AS PER CP21, CONTRIBUTIONS PLAN No.21. REFER TO DETAIL DESIGN BY J WYNDHAM PRINCE - REF.9985-12-CC3001 TO CC3900.

NEWPARK PRECINCT 7 FUTURE STAGE 7F

NEWPARK PRECINCT 5
REFER 998511/CC400-478 DA-17-01165
BY J WYNDHAM PRINCE

I hereby certify that engineering works shown on this plan have been constructed generally in accordance with Construction Certificate 16632 issued by Land Development Certificates

Signature: *[Signature]*
PETER ROBERT WARWICK
Registered Land Surveyor
VINCE MORGAN SURVEYORS PTY LTD

DATE 14/11/2022 REF 20260-7

LDC These plans are referred to in certificate no. 16632 approved by:
Christopher Louis Wahbe
Registered Certifier
Registration No: BDC 3015
Categories: Certifier - Subdivision
Land Development Certificates
www.LDC.com.au

AIR SERVICES LAND

PMF REFUGE AREA ABOVE RL 26.4

A	ISSUE FOR CONSTRUCTION APPROVAL	DES	DRN	CKD	APR	DATE	11/08/21		
	AMENDMENT	DES	DRN	CKD	APR	DATE			

J. WYNDHAM PRINCE
CONSULTING CIVIL INFRASTRUCTURE ENGINEERS & PROJECT MANAGERS

PO Box 4366 PENRITH WESTFIELD NSW 2750
P 02 4720 3300 W www.jwprince.com.au E jwp@jwprince.com.au

CLIENT: **WINTEN PROPERTY GROUP**

STATUS: **ISSUE FOR CONSTRUCTION APPROVAL**

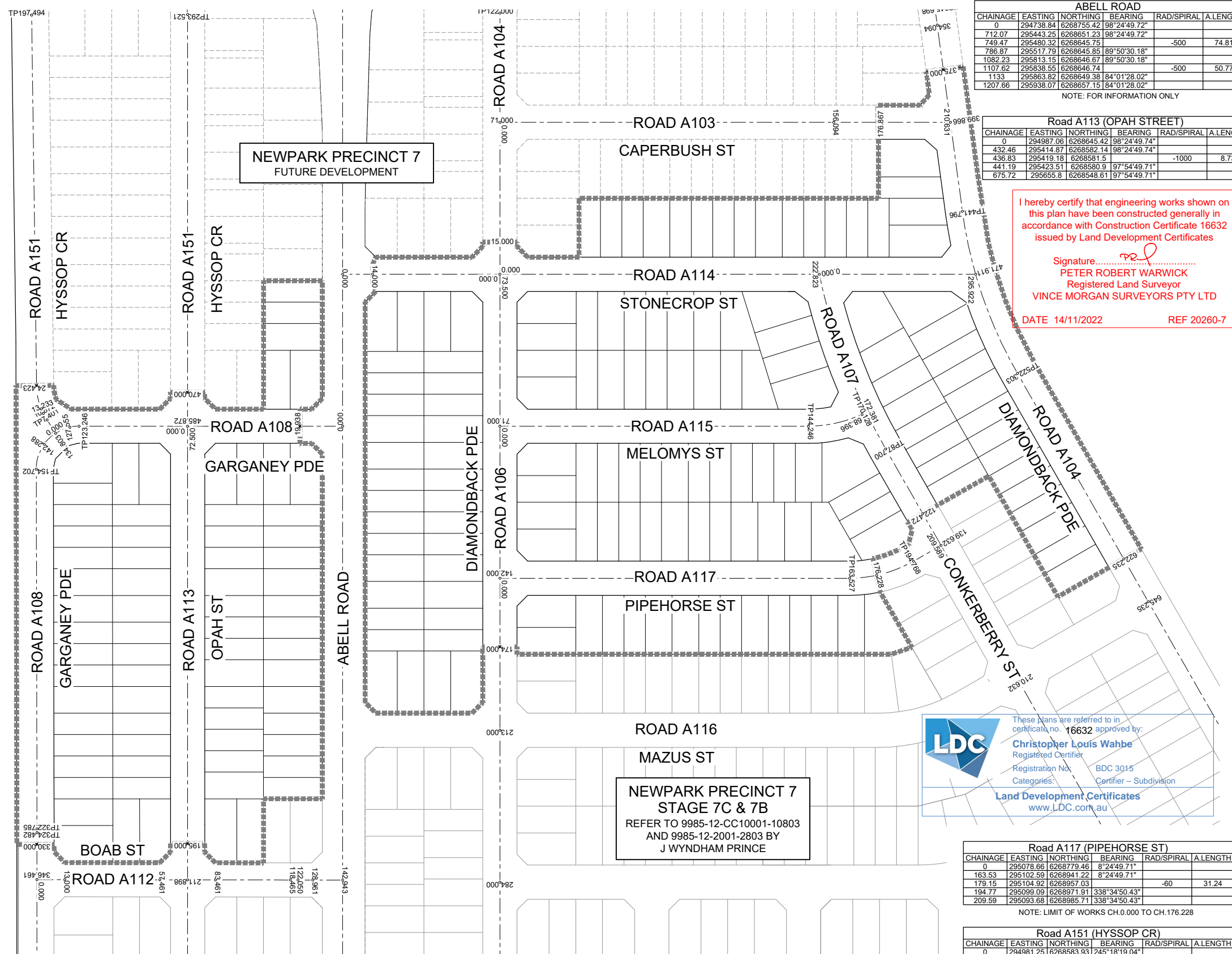
THIS DRAWING MUST NOT BE USED FOR CONSTRUCTION UNLESS SIGNED AS PART OF AN APPROVED CONSTRUCTION CERTIFICATE.

NEWPARK PRECINCT 7, STAGE 7D
OVERALL SITE PLAN

PROJECT No: **9985-12**
SHEET No: **CC12004**

AZIMUTH: M.G.A.94 DATUM: A.H.D. ORIGIN: SSM 1112 PLAN No: **9985-12-CC12004**

PROJECT No: **9985-12**
SHEET No: **CC12004**



AIR SERVICES LAND

NEWPARK PRECINCT 7
FUTURE DEVELOPMENT

NEWPARK PRECINCT 7
STAGE 7C & 7B
REFER TO 9858-12-CC10001-10803
AND 9858-12-2001-2803 BY
J WYNDHAM PRINCE

I hereby certify that engineering works shown on this plan have been constructed generally in accordance with Construction Certificate 16632 issued by Land Development Certificates

Signature: 
PETER ROBERT WARWICK
 Registered Land Surveyor
VINCE MORGAN SURVEYORS PTY LTD

DATE 14/11/2022 REF 20260-7

LDC

These Plans are referred to in certificate no. 16632 approved by:
Christopher Louis Wahbe
 Registered Certifier
 Registration No: BDC 3015
 Categories: Certifier - Subdivision
Land Development Certificates
 www.LDC.com.au

ABELL ROAD

CHAINAGE	EASTING	NORTHING	BEARING	RAD/SPIRAL	A.LENGTH
0	294738.84	6268755.42	98°24'49.72"		
712.07	295443.25	6268651.23	98°24'49.72"	-500	74.81
749.47	294480.32	6268645.75	89°50'30.18"		
786.87	295517.79	6268645.85	89°50'30.18"		
1082.23	295813.15	6268646.67	89°50'30.18"		
1107.62	295838.55	6268646.74		-500	50.77
1133	295863.82	6268649.38	84°01'28.02"		
1207.66	295938.07	6268657.15	84°01'28.02"		

NOTE: FOR INFORMATION ONLY

Road A113 (OPAH STREET)

CHAINAGE	EASTING	NORTHING	BEARING	RAD/SPIRAL	A.LENGTH
0	294987.06	6268645.42	98°24'49.74"		
432.46	295414.87	6268582.14	98°24'49.74"	-1000	8.73
436.83	295419.18	6268581.5			
441.19	295423.51	6268580.9	97°54'49.71"		
675.72	295655.8	6268548.61	97°54'49.71"		

Road A103 (CAPERBUSH ST)

CHAINAGE	EASTING	NORTHING	BEARING	RAD/SPIRAL	A.LENGTH
0	294867.95	6268810.62	8°24'49.73"		
210.63	294898.77	6269018.99	8°24'49.73"		

NOTE: LIMIT OF WORKS CH.176.867 TO 210.631

Road A104 (DIAMONDBACK PDE)

CHAINAGE	EASTING	NORTHING	BEARING	RAD/SPIRAL	A.LENGTH
0	294938.19	6268800.23	278°24'49.73"		
122	294817.5	6268818.08	278°24'49.73"		
137.71	294797.72	6268821.01		20	31.42
153.42	294800.64	6268840.8	8°24'49.74"		
318.97	294824.57	6269002.59	8°24'49.74"		
331.33	294827.13	6269019.88		20	28.73
345.7	294844.61	6269019.66	90°42'51.41"		
441.8	294940.7	6269018.46	90°42'51.41"		
482.05	294981.46	6269017.96		-208.4	80.51
522.3	295019.4	6269032.84	68°34'50.15"		
741.25	295223.23	6269112.8	68°34'50.15"		
814.38	295294.24	6269140.66		-208.4	146.25
887.5	295330.49	6269207.77	28°22'20.89"		
994.7	295381.43	6269302.1	28°22'20.89"		
997.29	295382.66	6269304.38		1000	5.18
999.88	295383.9	6269306.65	28°40'08.95"		
1261.16	295509.25	6269535.9	28°40'08.95"		
1290.35	295523.37	6269561.71		191.6	58.38
1319.54	295544.58	6269582.1	46°07'40.37"		
1381.49	295589.23	6269625.03	46°07'40.37"		
1416.33	295614.76	6269649.57		-158.4	69.69
1451.17	295627.41	6269682.66	20°55'13.87"		
1482.84	295638.71	6269712.23	20°55'13.87"		
1497.46	295643.95	6269725.93		151.6	29.24
1512.08	295651.72	6269738.37	31°58'19.74"		
1912.08	295863.52	6270077.7	31°58'19.74"		
1945.05	295884.96	6270112.04		45	65.94
1978.02	295921.37	6270094.34	115°53'02.23"		
2205.98	296126.39	6269994.68	115°53'02.23"		
2237.95	296162.38	6269977.19		41.6	63.73
2289.71	296145.29	6269940.54	203°42'14.90"		
2403.62	296092.46	6269817.93	203°42'14.90"		
2464.73	296067.76	6269761.68		485.6	122.22
2525.84	296029.84	6269713.36	218°07'28.14"		
2596.31	295986.33	6269657.92	218°07'28.14"		

NOTE: LIMIT OF WORKS CH.0.000 TO CH.15.000 AND CH.375.000 TO CH.622.235

Road A106 (DIAMONDBACK PDE)

CHAINAGE	EASTING	NORTHING	BEARING	RAD/SPIRAL	A.LENGTH
0	294938.19	6268800.23	98°24'49.73"		
521.43	295454	6268723.94	98°24'49.73"	-426.5	63.81
553.33	295485.62	6268719.26			
585.24	295517.59	6268719.35	89°50'30.19"		
773.75	295706.1	6268719.87	89°50'30.19"		

NOTE: LIMIT OF WORKS CH.0.000 TO CH.174.000

Road A107 (CONKERBERRY PDE)

CHAINAGE	EASTING	NORTHING	BEARING	RAD/SPIRAL	A.LENGTH
0	294960.04	6268947.95	86°34'48.72"		
43.85	294960.04	6268947.95		-279.4	87.7
87.7	295045.33	6268966.75	68°34'50.16"		
306.65	295249.16	6269046.7	68°34'50.16"		
393.15	295332.36	6269079.34		-279.39	173
479.66	295381.17	6269154.21			
479.66	295381.18	6269154.22	33°06'07.67"		

NOTE: LIMIT OF WORKS CH.0.000 TO CH.122.472

Road A108 (GARGANEY PDE)

CHAINAGE	EASTING	NORTHING	BEARING	RAD/SPIRAL	A.LENGTH
0	294997.67	6268717.14	188°24'49.73"		
123.25	294978.63	6268595.22	188°24'49.73"		
138.97	294976.7	6268575.39		-20	31.46
154.7	294996.53	6268572.5	98°18'00.18"		
322.78	295162.86	6268548.24	98°18'00.18"		
323.63	295163.69	6268548.11		500	1.7
324.48	295164.53	6268547.99	98°29'40.23"		
592.95	295430.06	6268508.33	98°29'40.23"		
595.48	295432.56	6268507.96		-500	5.07
598.02	295435.07	6268507.61	97°54'49.75"		
798.15	295633.3	6268480.05	97°54'49.75"		
815.6	295656.89	6268476.77		-20	34.89
833.04	295656.04	6268500.57	357°58'00.63"		
855.82	295655.24	6268523.33	357°58'00.63"		
894.74	295653.84	6268562.65		218.4	77.85
933.67	295666.25	6268599.99	18°23'26.03"		
1057.54	295705.33	6268717.53	18°23'26.03"		
1062.55	295706.91	6268722.29		-391.6	10.01
1067.56	295708.37	6268727.08	16°55'31.02"		
1176.64	295740.13	6268831.43	16°55'31.02"		
1261.2	295765.03	6268913.27		-457.6	169.12
1345.76	295758.69	6268988.57	355°44'59.35"		
1481.34	295748.64	6269133.78	355°44'59.35"		
1555.93	295742.97	6269210.08		272.4	149.18
1630.52	295777.86	6269278.17	27°07'40.09"		
1935.32	295916.84	6269549.44	27°07'40.09"		
1951.78	295926.67	6269568.63		-20	32.92
1968.24	295906.8	6269577.292	292°49'04.85"		
2043.56	295837.37	6269606.2	292°49'04.85"		

NOTE: LIMIT OF WORKS CH.0.000 TO CH.19.938 TO 330

Road A114 (STONECROP ST)

CHAINAGE	EASTING	NORTHING	BEARING	RAD/SPIRAL	A.LENGTH
0	294927.43	6268727.52	8°24'49.73"		
295.92	294970.73	6269020.26	8°24'49.73"		

NOTE: LIMIT OF WORKS CH.14.000 TO CH.295.922

Road A115 (MELOMYS ST)

CHAINAGE	EASTING	NORTHING	BEARING	RAD/SPIRAL	A.LENGTH
0	295008.42	6268789.84	8°24'49.78"		
144.25	295029.53	6268932.54	8°24'49.78"		
157.19	295031.45	6268945.54		-60	25.88
170.13	295027.76	6268958.16	343°41'52.96"		
172.38	295027.13	6268960.32	343°41'52.96"		

NOTE: LIMIT OF WORKS CH.0.000 TO CH.172.381

Road A117 (PIPEHORSE ST)

CHAINAGE	EASTING	NORTHING	BEARING	RAD/SPIRAL	A.LENGTH
0	295078.66	6268779.46	8°24'49.71"		
163.53	295102.59	6268941.22	8°24'49.71"		
179.15	295104.92	6268957.03		-60	31.24
194.77	295099.09	6268971.91	338°34'50.43"		
209.59	295093.68	6268985.71	338°34'50.43"		

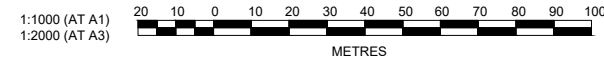
NOTE: LIMIT OF WORKS CH.0.000 TO CH.176.228

Road A151 (HYSSOP CR)

CHAINAGE	EASTING	NORTHING	BEARING	RAD/SPIRAL	A.LENGTH
0	294981.25	6268583.93	245°18'19.04"		
7.4	294974.52	6268580.84	245°18'19.04"		
15.87	294966.62	6268577.21		30	16.93
24.33	294958	6268578.36	277°38'19.92"		
197.49	294786.38	6268601.38	277°38'19.92"		
213.34	294768.28	6268604.08		20	31.69
229.18	294769.25	6268624.13	8°24'49.73"		
262.11	294774.07	6268656.7	8°24'49.73"		
277.81	294776.99	6268676.49		20	31.42
293.52	294796.78	6268673.56	98°24'49.73"		
485.87	294987.06	6268645.42	98°24'49.73"		

NOTE: LIMIT OF WORKS CH.0.000 TO CH.24.423 AND CH.470.000 TO 485.872

NOTES:
 1. SSM & CONTROLS TO BE PROVIDED AT CONSTRUCTION STAGE BY VINCE MORGAN SURVEYORS.



NO.	DESCRIPTION	DATE	BY	CHECKED	APPROVED
A	ISSUE FOR CONSTRUCTION APPROVAL	11/08/21	MS	JC	NDWN
	AMENDMENT				

J. WYNDHAM PRINCE
 CONSULTING CIVIL INFRASTRUCTURE ENGINEERS & PROJECT MANAGERS

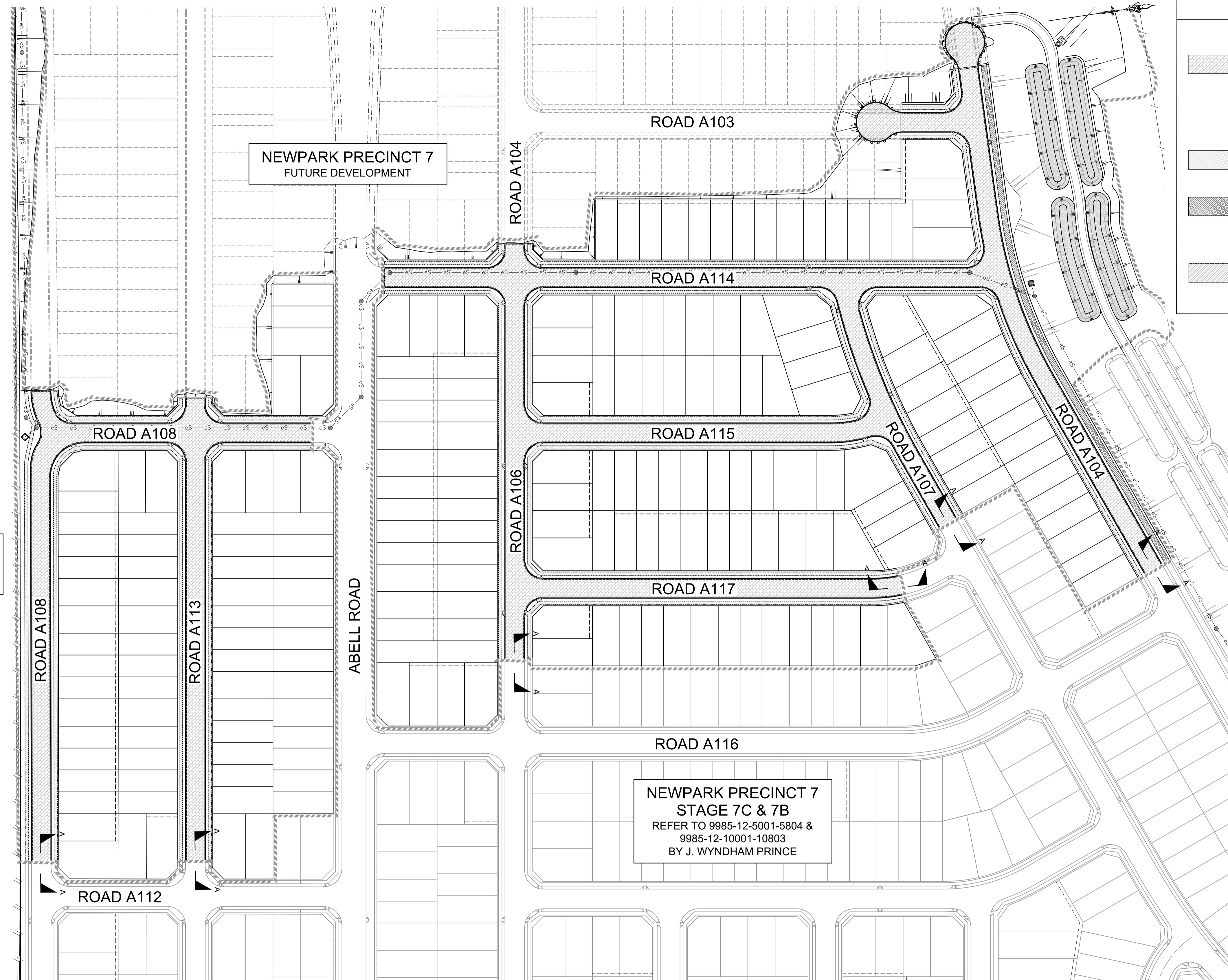
PO Box 4366 PENRITH WESTFIELD NSW 2750
 P 02 4720 3300 W www.jwprince.com.au E jwp@jwprince.com.au

CLIENT:
 **WINTEN PROPERTY GROUP**

STATUS:
ISSUE FOR CONSTRUCTION APPROVAL

THIS DRAWING MUST NOT BE USED FOR CONSTRUCTION UNLESS SIGNED AS PART OF AN APPROVED CONSTRUCTION CERTIFICATE.

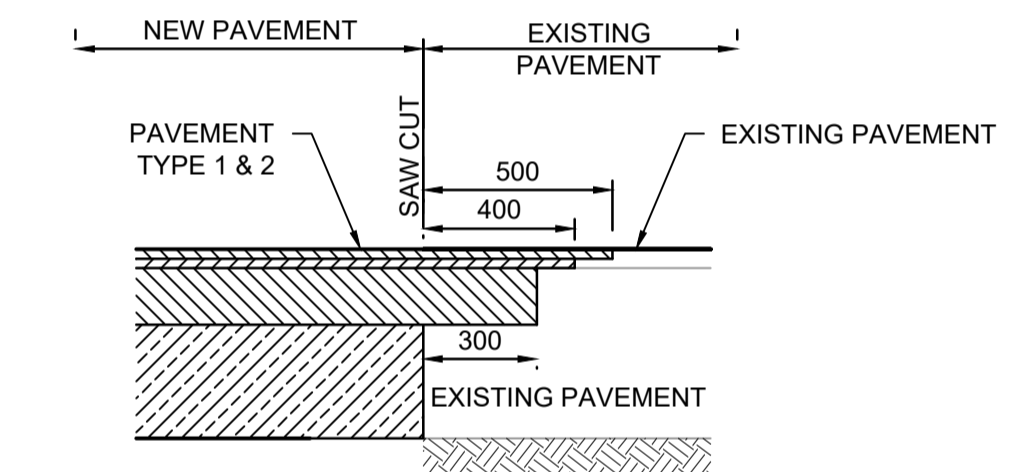
Plotted: 11 August, 2021 12:02:28 PM File Name: J:\9985DCC - Construction Certificate Approval Plans\PK12 WESTERN PRECINCTS\12 - Precinct 7D\9985-12-CC12006.dwg



LEGEND	
PAVEMENT DESIGN (REFER TO REPORT BY GEOTECH TESTING PTY LTD (Ref: 8581/5-AA) DATED 12 MARCH 2020)	
	PAVEMENT TYPE 1 (ROAD TYPE 4 - LOCAL + ROAD TYPE 2 - BOUNDARY ROADS & ROAD TYPE 7 - ROAD ADJOINING AIR SERVICES LAND) ESA 5x10⁵ AC10 (mm) = 2x25 TACK SEAL BASE COURSE - DGB20 (mm) = 150 SUB-BASE COURSE - CRUSHED SANDSTONE (mm) = 270 TOTAL (mm) = 470
	PAVEMENT TYPE 2 (FOOTPATH) CONCRETE 125mm TO BLACKTOWN CITY COUNCIL "PATH PAVING POLICY 2009"
	PAVEMENT TYPE 3 (SHARED PATH) CONCRETE 125mm WITH SL82 MESH TO BLACKTOWN CITY COUNCIL "PATH PAVING POLICY 2009"
	PAVEMENT TYPE 4 - TEMPORARY TURNING HEAD IN ACCORDANCE WITH BCC ENGINEERING GUIDE FOR DEVELOPMENT AC10 (mm) = 25 BASE COURSE - DGB20 (mm) = 150 ON COMPACTED SUB-GRADE TOTAL (mm) = 175

PAVEMENT NOTES:

- PAVEMENT DESIGN FOR CONTROLLED FILL TO HAVE A DESIGN CBR OF 4%. ALTERNATIVELY, EXISTING SUBGRADE CAN BE TREATED. REFER TO PAVEMENT DESIGN REPORT BY GEOTECHNICAL ENGINEER FOR TREATMENT DETAILS.
- THE PAVEMENT DESIGN IS PRELIMINARY ONLY AND SUBJECT TO CONFIRMATION VIA ON-SITE CBR TESTING PRIOR TO IMPORTATION AND PLACEMENT OF ROAD PAVEMENT MATERIALS.



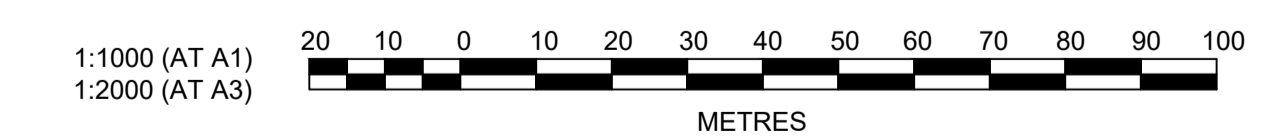
SECTION A-A
 INTERFACE BETWEEN NEW PAVEMENT AND EXISTING FLEXIBLE PAVEMENTS
 SCALE 1:20

I hereby certify that engineering works shown on this plan have been constructed generally in accordance with Construction Certificate 16632 issued by Land Development Certificates

Signature:
PETER ROBERT WARWICK
 Registered Land Surveyor
VINCE MORGAN SURVEYORS PTY LTD

DATE 14/11/2022 REF 20260-7

These plans are referred to in certificate no. **16632** approved by:
Christopher Louis Wahbe
 Registered Certifier
 Registration No: BDC 3015
 Categories: Certifier - Subdivision
Land Development Certificates
www.LDC.com.au



NO.	DESCRIPTION	DATE	BY	CHECKED	DATE
1	ISSUE FOR CONSTRUCTION APPROVAL	11/08/21	MS	JC	
2	AMENDMENT		DES	DRN	CKD

J. WYNDHAM PRINCE
 CONSULTING CIVIL INFRASTRUCTURE ENGINEERS & PROJECT MANAGERS

PO Box 4366 PENRITH WESTFIELD NSW 2750
 P 02 4720 3300 W www.jwprince.com.au E jwp@jwprince.com.au

CLIENT:

WINTAN PROPERTY GROUP

STATUS: **ISSUE FOR CONSTRUCTION APPROVAL**

THIS DRAWING MUST NOT BE USED FOR CONSTRUCTION UNLESS SIGNED AS PART OF AN APPROVED CONSTRUCTION CERTIFICATE.

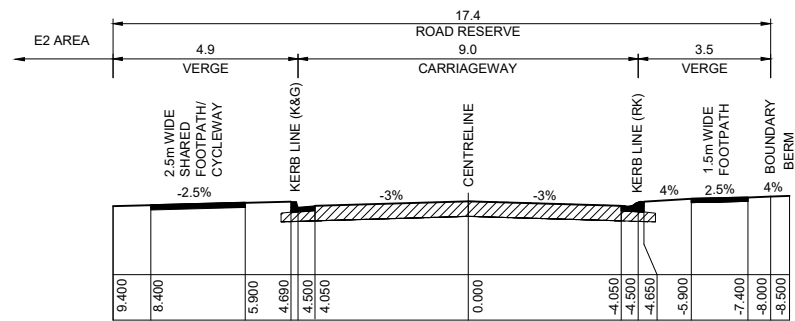
NEWPARK PRECINCT 7, STAGE 7D PAVEMENT PLAN

PROJECT No: **9985-12**
 SHEET No: **CC12006**

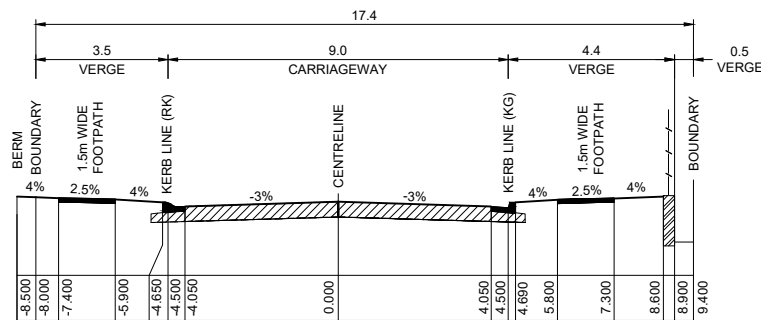
PLAN No: **9985-12-CC12006**

PROJECT No:	9985-12
SHEET No:	CC12006
PLAN No:	9985-12-CC12006

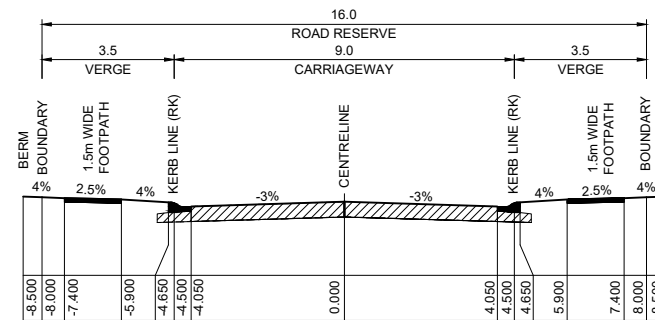
AZIMUTH: M.G.A.94	DATUM: A.H.D.	ORIGIN: SSM 1112	PLAN No: 9985-12-CC12006	A
-------------------	---------------	------------------	--------------------------	---



TYPE 2 - BOUNDARY ROAD
ROAD A104 - (CH 375.000 TO CH 622.235)
1:100 NATURAL




TYPE 7 - ROAD ADJOINING AIR SERVICES LAND
ROAD A108 - (CH 134.803 - CH 330.000)
ROAD A151 - (0.000 - 24.423)
1:100 NATURAL



TYPE 4 - LOCAL ROAD
ROAD A103 - (CH 176.867 TO CH 210.631)
ROAD A104 - (CH 0.000 TO CH 15.000)
ROAD A106 - (CH 0.000 TO CH 174.000)
ROAD A107 - (CH 0.000 TO CH 122.472)
ROAD A108 - (CH 19.938 TO CH 134.803)
ROAD A113 - (CH 0.000 TO CH 195.000)
ROAD A114 - (CH 14.000 TO CH 295.922)
ROAD A115 - (CH 0.000 TO CH 172.381)
ROAD A117 - (CH 0.000 TO CH 176.228)
ROAD A151 - (CH 470.000 - CH 485.872)
1:100 NATURAL

I hereby certify that engineering works shown on this plan have been constructed generally in accordance with Construction Certificate 16632 issued by Land Development Certificates

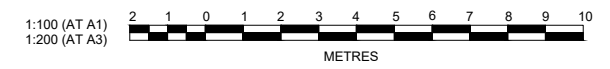
Signature: 
PETER ROBERT WARWICK
Registered Land Surveyor
VINCE MORGAN SURVEYORS PTY LTD

DATE 14/11/2022 REF 20260-7

These plans are referred to in certificate no. 16632 approved by:

Christopher Louis Wahbe
Registered Certifier
Registration No: BDC 3015
Categories: Certifier - Subdivision

Land Development Certificates
www.LDC.com.au



Plotted: 11 August, 2021 7:23:21 AM File Name: J:\9885DICC - Construction Certificate Approval Plans\PK12 WESTERN PRECINCTS\12 - Precinct 7D\9885-12-CC12007.dwg

NO.	DESCRIPTION	DES	DRN	CKD	APR	DATE
A	ISSUE FOR CONSTRUCTION APPROVAL	DG/KE	NDWN/F	JC	MS	11/08/21
	AMENDMENT					

J. WYNDHAM PRINCE
CONSULTING CIVIL INFRASTRUCTURE ENGINEERS & PROJECT MANAGERS

PO Box 4366 PENRITH WESTFIELD NSW 2750
P 02 4720 3300 W www.jwprince.com.au E jwp@jwprince.com.au

CLIENT:



WINTAN PROPERTY GROUP

STATUS: **ISSUE FOR CONSTRUCTION APPROVAL**

THIS DRAWING MUST NOT BE USED FOR CONSTRUCTION UNLESS SIGNED AS PART OF AN APPROVED CONSTRUCTION CERTIFICATE.

NEWPARK PRECINCT 7, STAGE 7D
TYPICAL SECTIONS

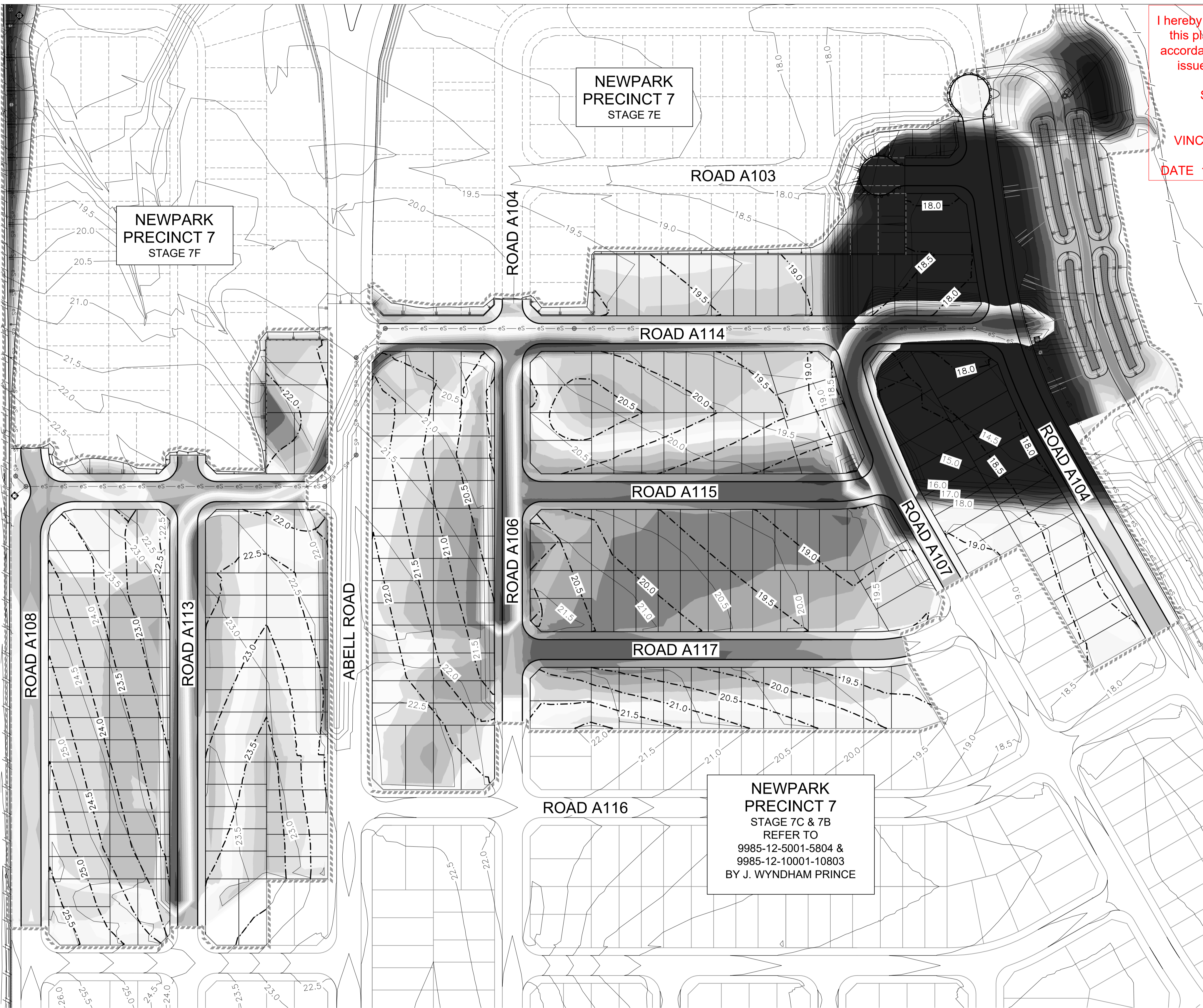
PROJECT No: **9985-12**
SHEET No: **CC12007**

AZIMUTH: M.G.A.94 DATUM: A.H.D. ORIGIN: SSM 1112 PLAN No: **9985-12-CC12007**

PROJECT No: **9985-12**
SHEET No: **CC12007**

AZIMUTH: M.G.A.94 DATUM: A.H.D. ORIGIN: SSM 1112 PLAN No: **9985-12-CC12007**

Plotted: 6 September, 2021 4:33:15 PM File Name: J:\9985BDC - Construction Certificate Approval Plans\PK12 WESTERN PRECINCTS12 - Precinct 7D\9985-12-CC12010.dwg



I hereby certify that engineering works shown on this plan have been constructed generally in accordance with Construction Certificate 16632 issued by Land Development Certificates

Signature *PR*
PETER ROBERT WARWICK
 Registered Land Surveyor
VINCE MORGAN SURVEYORS PTY LTD
 DATE 14/11/2022 REF 20260-7

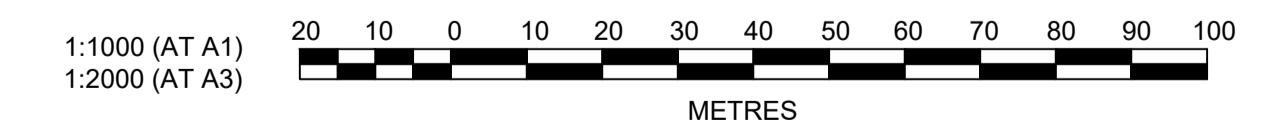
LEGEND		
Lower_value	Upper_value	Colour
-8.0	to -3	m
-3	to -2.5	m
-2.5	to -1.5	m
-1.5	to -1	m
-1	to -0.8	m
-0.8	to -0.6	m
-0.6	to -0.4	m
-0.4	to -0.2	m
-0.2	to 0	m
0.0	to 0.2	m
0.2	to 0.4	m
0.4	to 0.6	m
0.6	to 0.8	m
0.8	to 1	m
1	to 1.5	m
1.5	to 2	m
2	to 2.5	m
2.5	to 8	m

NOTE:
 CUT FILL TAKEN FROM EXISTING & BOXING DESIGN SURFACE TO EXISTING SURFACE (NO BULKING FACTORS)

EXISTING AND DESIGN CONTOUR ADDED

NEWPARK PRECINCT 7
 STAGE 7C & 7B
 REFER TO
 9985-12-5001-5804 &
 9985-12-10001-10803
 BY J. WYNDHAM PRINCE

LDC These plans are referred to in certificate no. 16632 approved by:
Christopher Louis Wahbe
 Registered Certifier
 Registration No: BDC 3015
 Categories: Certifier - Subdivision
Land Development Certificates
 www.LDC.com.au



B	EXISTING AND DESIGN SURFACES SHOWN	DG/KE	NDW	JC	PM	06/09/21
A	ISSUE FOR CONSTRUCTION APPROVAL	DG/KE	NDW/NF	JC	MS	11/08/21
	AMENDMENT	DES	DRN	CKD	APR	DATE

J. WYNDHAM PRINCE
 CONSULTING CIVIL INFRASTRUCTURE ENGINEERS & PROJECT MANAGERS
 PO Box 4366 PENRITH WESTFIELD NSW 2750
 P 02 4720 3300 W www.jwprince.com.au E jwp@jwprince.com.au

CLIENT:
WINTAN PROPERTY GROUP

STATUS: **ISSUE FOR CONSTRUCTION APPROVAL**
 THIS DRAWING MUST NOT BE USED FOR CONSTRUCTION UNLESS SIGNED AS PART OF AN APPROVED CONSTRUCTION CERTIFICATE.

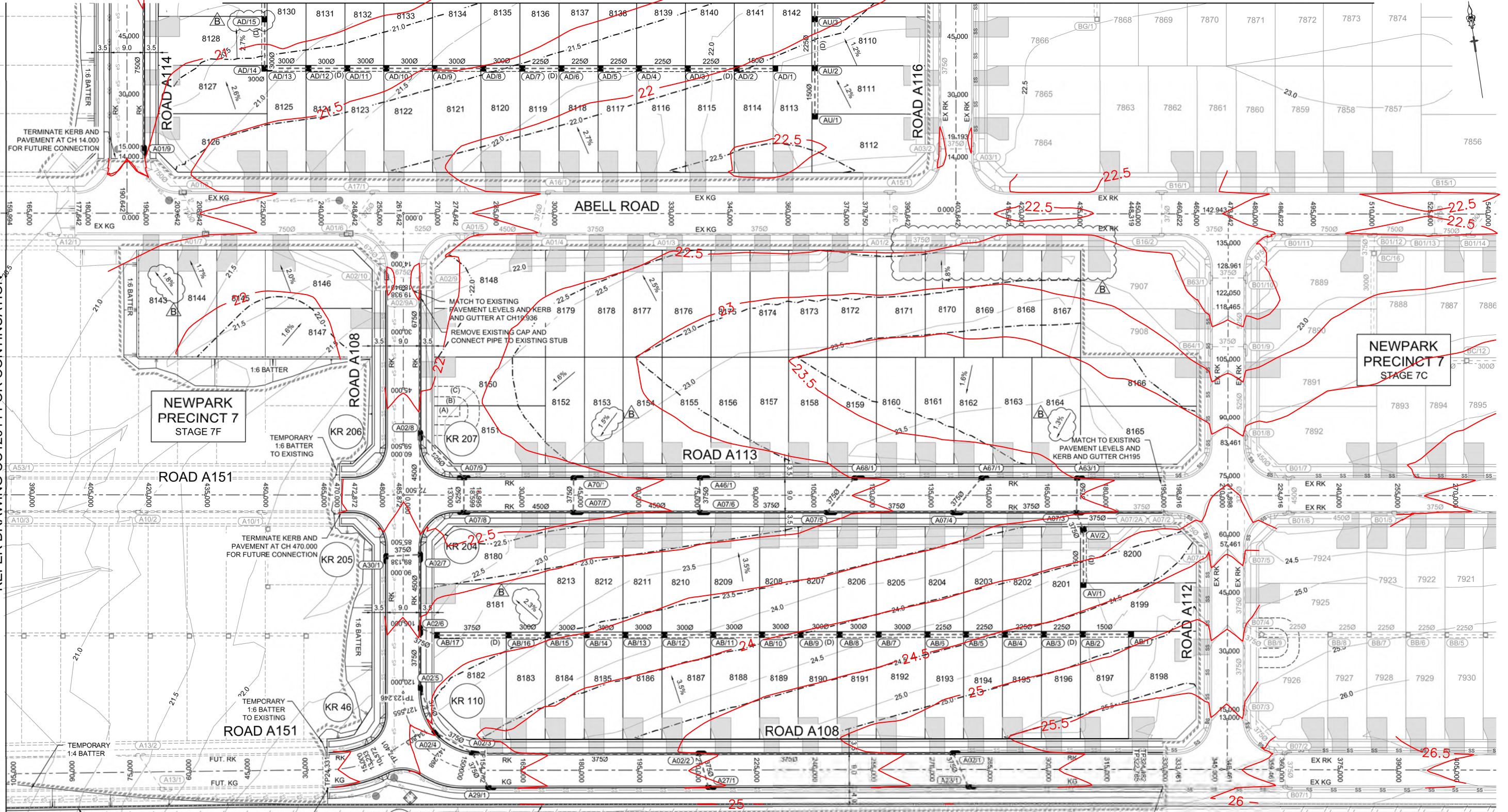
NEWPARK PRECINCT 7, STAGE 7D
 CUT & FILL PLAN

PROJECT No: **9985-12**
 SHEET No: **CC12010**
 PLAN No: **9985-12-CC12010**

AZIMUTH: M.G.A.94 DATUM: A.H.D. ORIGIN: SSM 1112

REFER DRAWING CC12012 FOR CONTINUATION

REFER DRAWING CC12014 FOR CONTINUATION



NEWPARK PRECINCT 7 STAGE 7C

NEWPARK PRECINCT 7 STAGE 7F

AIR SERVICES LAND

I hereby certify that engineering works shown on this plan have been constructed generally in accordance with Construction Certificate 16632 issued by Land Development Certificates

Signature: PETER ROBERT WARWICK
REGISTERED LAND SURVEYOR
VINCE MORGAN SURVEYORS PTY LTD

DATE 14/11/2022 REF 20260-7

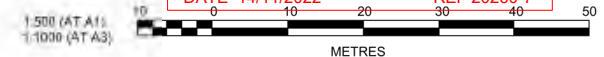
EASEMENT NOTES
(A) EASEMENT FOR PADMOUNT STATION 2.75m x 5.5m AND VARIABLE.
(B) RESTRICTION ON THE USE OF LAND IN RELATION TO FIRE RATINGS OF BUILDINGS MEASURED 3m FROM THE SUBSTATION PLINTH.
(C) RESTRICTION ON THE USE OF LAND IN RELATION TO SWIMMING POOLS MEASURED 5m FROM THE SUBSTATION PLINTH.
(D) EASEMENT FOR DRAINAGE 1.5m WIDE



WARNING! UNDERGROUND SERVICE CABLES IN VICINITY. EXERCISE EXTREME CAUTION DURING EXCAVATION. CONTACT "DIAL BEFORE YOU DIG" PRIOR TO ANY CONSTRUCTION WORK

UTILITIES SHOWN ARE DIAGRAMMATIC ONLY. CONTRACTORS ARE RESPONSIBLE TO LOCATE AND AVOID DAMAGE TO THEM AS SPECIFIED BY EACH UTILITIES EXCAVATION GUIDE LINES & STANDARDS. NOTE: UTILITIES SHOWN MAY NOT INCLUDE ALL SERVICES WITHIN THE LIMIT OF WORKS

LDC Land Development Certificates
These plans are stamped in accordance with certificate no. 16632 approved by Christopher Louis Wahbe Registered Engineer
Registration No. BDC 3015
Signature: Christopher Louis Wahbe
www.LDC.com.au



AMENDMENT	DES	DRN	CKD	APR	DATE
B	DG/KE	NDW	JC	PM	08/09/21
A	DG/KE	NDW/NF	JC	MS	11/08/21

J. WYNDHAM PRINCE
CONSULTING CIVIL INFRASTRUCTURE ENGINEERS & PROJECT MANAGERS
PO Box 4366 PENRITH WESTFIELD NSW 2750
P 02 4720 3300 W www.jwprince.com.au E jwp@jwprince.com.au

CLIENT: **WINTEN PROPERTY GROUP**

STATUS: **ISSUE FOR CONSTRUCTION APPROVAL**
THIS DRAWING MUST NOT BE USED FOR CONSTRUCTION UNLESS SIGNED AS PART OF AN APPROVED CONSTRUCTION CERTIFICATE

NEWPARK PRECINCT 7, STAGE 7D
ENGINEERING PLAN
SHEET 1
AZIMUTH: MCGA94 DATUM: A.H.D. ORIGIN: SSM 1112 PLAN No: 9985-12-CC12011

PROJECT No: **9985-12**
SHEET No: **CC12011**
B

REFER DRAWING CC12013 FOR CONTINUATION

I hereby certify that engineering works shown on this plan have been constructed generally in accordance with Construction Certificate 16632 issued by Land Development Certificates

Signature: *P.R.*
PETER ROBERT WARWICK
Registered Land Surveyor
VINCE MORGAN SURVEYORS PTY LTD

DATE 14/11/2022 REF 20260-7

NEWPARK
PRECINCT 7
STAGE 7C

REFER DRAWING CC12011 FOR CONTINUATION

- EASEMENT NOTES**
- (A) EASEMENT FOR PADMOUNT STATION 2.75m x 5.5m AND VARIABLE.
 - (B) RESTRICTION ON THE USE OF LAND IN RELATION TO FIRE RATINGS OF BUILDINGS MEASURED 3m FROM THE SUBSTATION PLINTH.
 - (C) RESTRICTION ON THE USE OF LAND IN RELATION TO SWIMMING POOLS MEASURED 5m FROM THE SUBSTATION PLINTH.
 - (D) EASEMENT FOR DRAINAGE 1.5m WIDE



WARNING!
UNDERGROUND SERVICE CABLES IN VICINITY. EXERCISE EXTREME CAUTION DURING EXCAVATION. CONTACT "DIAL BEFORE YOU DIG" PRIOR TO ANY CONSTRUCTION WORK

UTILITIES SHOWN ARE DIAGRAMMATIC ONLY. CONTRACTORS ARE RESPONSIBLE TO LOCATE AND AVOID DAMAGE TO THEM AS SPECIFIED BY EACH UTILITIES EXCAVATION GUIDE LINES & STANDARDS. NOTE: UTILITIES SHOWN MAY NOT INCLUDE ALL SERVICES WITHIN THE LIMIT OF WORKS

LDC Land Development Certificates
www.LDC.com.au

These plans are referred to in certificate no. 16632 approved by
Christopher Louis Wahbe
Registered Certifier
Registration No: BOC 3015
Categories: Certifier - Infrastructure



Plot: 6 September, 2021 4:40:08 PM File Name: J:\985D\CC - Construction Certificate Approval Plans\PK12 WESTERN PRECINCTS12 - Precinct 7D\985-12-CC12012.dwg

B	ADDITIONAL GRADES ADDED & LINE REMOVED	DG/KE	NDW	JC	PM	06/09/21
A	ISSUE FOR CONSTRUCTION APPROVAL	DG/KE	NDW/NF	JC	MS	11/08/21
	AMENDMENT	DES	DRN	CKD	APR	DATE

J. WYNDHAM PRINCE
CONSULTING CIVIL INFRASTRUCTURE ENGINEERS & PROJECT MANAGERS

PO Box 4366 PENRITH WESTFIELD NSW 2750
P 02 4720 3300 W www.jwprince.com.au E jwp@jwprince.com.au

CLIENT: **WINTEN PROPERTY GROUP**

STATUS: **ISSUE FOR CONSTRUCTION APPROVAL**
THIS DRAWING MUST NOT BE USED FOR CONSTRUCTION UNLESS SIGNED AS PART OF AN APPROVED CONSTRUCTION CERTIFICATE

NEWPARK PRECINCT 7, STAGE 7D
ENGINEERING PLAN
SHEET 2

PROJECT No: **9985-12**
SHEET No: **CC12012**
FLAN No: **9985-12-CC12012**

B

