

I hereby certify that engineering works shown on this plan have been constructed generally in accordance with the plans and specifications approved by Blacktown City Council

Signature.....

IAN VINCENT MYERS

Registered Land Surveyor

VINCE MORGAN SURVEYORS PTY LTD

DATE: 22/09/2019

REF: 20260-6



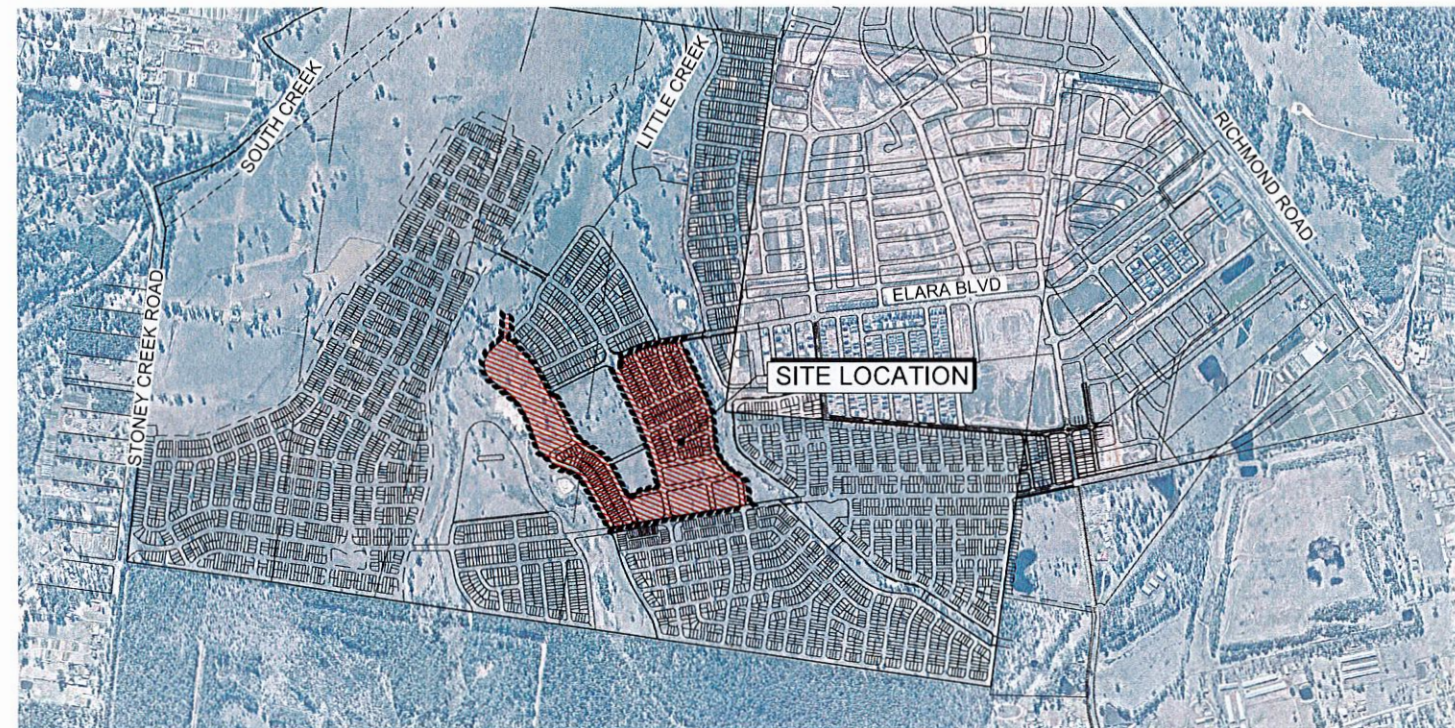
# NEWPARK - PRECINCT 6 CONSTRUCTION CERTIFICATE

PROPOSED LOT, ROAD AND DRAINAGE WORKS  
COUNCIL REF : DA-16-05384

## BLACKTOWN CITY COUNCIL

1. The works covered by this Engineering Construction Certificate must be inspected by Council's Engineering Department Supervisor, (Phone 9859 8587) between 7.30 am - 3.30 pm or 12.30 pm - 1.30 pm weekdays 18 hour notice must be given.
2. All relevant engineering conditions of notice of Determination  
No. 16-05384 Dated 25/11/17 must be completed.

Date 20/11/18 Mr Chris Robinson per Chris Robinson  
Development Engineer



## BLACKTOWN CITY COUNCIL

### Construction Certificate - Engineering No. 17-01765

This document forms part of the above approval issued under Section 109C(1)(b) of the Environmental Planning & Assessment Act, 1979.  
Kerry Robinson  
General Manager  
per: [Signature]

## LOCALITY SKETCH

Prepared By:

**J. WYNDHAM PRINCE**  
CONSULTING CIVIL INFRASTRUCTURE ENGINEERS  
& PROJECT MANAGERS

PO Box 4366 PENRITH WESTFIELD NSW 2750

P 02 4720 3300 F 02 4720 3399

W www.jwprince.com.au

E jwp@jwprince.com.au

ISSUED FOR CONSTRUCTION APPROVAL

PLAN No.  
998511/CC200 B  
FILE No. 998511CC200



Plotted 10 September 2018 10:35:18 AM File Name: J:\98511\CC201\CENTRAL PRECINCTS\98511\CC201.dwg

LEGEND	
I hereby certify that engineering works shown on this plan have been constructed generally in accordance with the plans and specifications approved by Blacktown City Council	FUTURE
VEHICULAR CROSSING	
KERB & GUTTER	
DISH CROSSING	
PRAM RAMP	
DRAINAGE LINE & PIT	
SUBSOIL	
HEADWALL	
GROSS POLLUTANT TRAP (GPT)	
GUIDE POSTS	
CONTOURS	
CATCH DRAIN	
KERB RETURN No	
ELECTRICITY, POWER POLE	
TELECOM. BOX	
WATER, STOP VALVE, HYDRANT	
SEWER, MANHOLE	
ELECTRICAL SUBSTATION	
STREET NAME SIGNS	
SURVEY MARKS - BENCH MARKS	
STATE SURVEY MARKS	
STAGE BOUNDARY	
CATCHMENT BOUNDARY	
FLOW DIRECTION ARROW	
EXISTING NATIVE VEGETATION	
NATIVE VEGETATION RETENTION	
EASEMENT FOR MAINTENANCE ACCESS	
INDICATIVE DRIVEWAYS LOCATIONS	
RL 17.3 CONTOUR	



UTILITIES SHOWN ARE DIAGRAMMATIC ONLY. CONTRACTORS ARE RESPONSIBLE TO LOCATE AND AVOID DAMAGE TO THEM AS SPECIFIED BY EACH UTILITIES EXCAVATION GUIDE LINES & STANDARDS.

NOTE: UTILITIES SHOWN MAY NOT INCLUDE ALL SERVICES WITHIN THE LIMIT OF WORKS

INDEX		
PLAN No.	PLAN NAME	REV
998511CC200	COVER SHEET	B
998511CC201	LEGEND, INDEX & GENERAL NOTES	C
998511CC202	OVERALL SITE PLAN	C
998511CC203	ROAD SETOUT PLAN SHEET 1	A
998511CC204	ROAD SETOUT PLAN SHEET 2	A
998511CC205	PAVEMENT PLAN SHEET 1	B
998511CC206	PAVEMENT PLAN SHEET 2	A
998511CC207	TYPICAL ROADCROSS SECTIONS	B
998511CC208	CUT & FILL PLAN	B
998511CC209	ENGINEERING PLAN SHEET 1	B
998511CC210	ENGINEERING PLAN SHEET 2	B
998511CC211	ENGINEERING PLAN SHEET 3	C
998511CC212	ENGINEERING PLAN SHEET 4	B
998511CC213	ENGINEERING PLAN SHEET 5	B
998511CC214	ENGINEERING PLAN SHEET 6	C
998511CC215	ROAD LONGITUDINAL SECTIONS SHEET 1	A
998511CC216	ROAD LONGITUDINAL SECTIONS SHEET 2	A
998511CC217	ROAD LONGITUDINAL SECTIONS SHEET 3	A
998511CC218	ROAD LONGITUDINAL SECTIONS SHEET 4	A
998511CC219	ROAD LONGITUDINAL SECTIONS SHEET 5	A
998511CC220	ROAD LONGITUDINAL SECTIONS SHEET 6	A
998511CC221	ROAD LONGITUDINAL SECTIONS SHEET 7	A
998511CC222	ROAD LONGITUDINAL SECTIONS SHEET 8	A
998511CC223	ROAD LONGITUDINAL SECTIONS SHEET 9	A
998511CC224	ROADCROSS SECTIONS SHEET 1	A
998511CC225	ROADCROSS SECTIONS SHEET 2	A
998511CC226	ROADCROSS SECTIONS SHEET 3	A
998511CC227	ROAD CROSS SECTIONS SHEET 4	A
998511CC228	ROADCROSS SECTIONS SHEET 5	A
998511CC229	ROADCROSS SECTIONS SHEET 6	A
998511CC230	ROAD CROSS SECTIONS SHEET 7	A
998511CC231	ROAD CROSS SECTIONS SHEET 8	A
998511CC232	ROAD CROSS SECTIONS SHEET 9	A
998511CC233	ROAD CROSS SECTIONS SHEET 10	A
998511CC234	ROAD CROSS SECTIONS SHEET 11	A
998511CC235	ROAD CROSS SECTIONS SHEET 12	A
998511CC236	ROAD CROSS SECTIONS SHEET 13	A
998511CC237	ROAD CROSS SECTIONS SHEET 14	A
998511CC238	ROAD CROSS SECTIONS SHEET 15	A
998511CC239	ROAD CROSS SECTIONS SHEET 16	A
998511CC240	ROAD CROSS SECTIONS SHEET 17	A
998511CC241	ROAD CROSS SECTIONS SHEET 18	A
998511CC242	ROAD CROSS SECTIONS SHEET 19	A
998511CC243	ROAD CROSS SECTIONS SHEET 20	A
998511CC244	KERB RETURN PLANS SHEET 1	A
998511CC245	KERB RETURN PLANS SHEET 2	A
998511CC246	KERB RETURN PLANS SHEET 3	A
998511CC247	KERB RETURN PLANS SHEET 4	A
998511CC248	KERB RETURN PLANS SHEET 5	A
998511CC249	KERB RETURN PLANS SHEET 6	A
998511CC250	KERB RETURN PLANS SHEET 7	A
998511CC251	KERB RETURN PLANS SHEET 8	A
998511CC252	KERB RETURN PLANS SHEET 9	A
998511CC253	KERB RETURN PLANS SHEET 10	A
998511CC254	CATCHMENT PLAN SHEET 1	A
998511CC255	CATCHMENT PLAN SHEET 2	A
998511CC256	PIT SCHEDULE	B
998511CC257	PIT SETOUT DETAILS	B
998511CC258	DRAINAGE LONGITUDINAL SECTIONS SYSTEM B - 10YR ARI	A
998511CC259	DRAINAGE LONGITUDINAL SECTIONS SYSTEM C 10YR ARI - SHEET 1	A
998511CC260	DRAINAGE LONGITUDINAL SECTIONS SYSTEM C 10YR ARI - SHEET 2	A
998511CC261	DRAINAGE LONGITUDINAL SECTIONS SYSTEM C 10YR ARI - SHEET 3	A
998511CC262	DRAINAGE LONGITUDINAL SECTIONS SYSTEM C 10YR ARI - SHEET 4	A
998511CC263	DRAINAGE LONGITUDINAL SECTIONS SYSTEM C 10YR ARI - SHEET 5	A
998511CC264	DRAINAGE LONGITUDINAL SECTIONS SYSTEM C 10YR ARI - SHEET 6	B
998511CC265	DRAINAGE LONGITUDINAL SECTIONS SYSTEM C 10YR ARI - SHEET 7	A
998511CC266	DRAINAGE LONGITUDINAL SECTIONS SYSTEM C 10YR ARI - SHEET 8	A
998511CC267	DRAINAGE LONGITUDINAL SECTIONS SYSTEM C 10YR ARI - SHEET 9	B
998511CC268	DRAINAGE LONGITUDINAL SECTIONS SYSTEM C 10YR ARI - SHEET 10	A
998511CC269	DRAINAGE LONGITUDINAL SECTIONS SYSTEM C 10YR ARI - SHEET 11	B
998511CC270	DRAINAGE LONGITUDINAL SECTIONS SYSTEM C & E 10YR ARI - SHEET 12	A
998511CC271	DRAINAGE LONGITUDINAL SECTIONS SYSTEM C 20YR ARI - SHEET 13	A
998511CC272	DRAINAGE LONGITUDINAL SECTIONS SYSTEM C 20YR ARI - SHEET 14	A
998511CC273	DRAINAGE LONGITUDINAL SECTIONS SYSTEM C 20YR ARI - SHEET 15	A
998511CC274	DRAINAGE LONGITUDINAL SECTIONS SYSTEM C 20YR ARI - SHEET 16	A
998511CC275	DRAINAGE LONGITUDINAL SECTIONS SYSTEM C 20YR ARI - SHEET 17	A
998511CC276	DRAINAGE LONGITUDINAL SECTIONS SYSTEM D 10YR ARI - SHEET 1	A
998511CC277	DRAINAGE LONGITUDINAL SECTIONS SYSTEM D 10YR ARI - SHEET 2	B
998511CC278	DRAINAGE LONGITUDINAL SECTIONS SYSTEM D 10YR ARI - SHEET 3	B
998511CC279	DRAINAGE LONGITUDINAL SECTIONS SYSTEM D 10YR ARI - SHEET 4	B
998511CC280	DRAINAGE LONGITUDINAL SECTIONS SYSTEM D 10YR ARI - SHEET 5	B
998511CC281	DRAINAGE LONGITUDINAL SECTIONS SYSTEM D 10YR ARI - SHEET 6	B
998511CC282	DRAINAGE LONGITUDINAL SECTIONS SYSTEM E 10YR ARI - SHEET 1	B
998511CC283	DRAINAGE LONGITUDINAL SECTIONS SYSTEM E 10YR ARI AND BASIN OUTLET - SHEET 2	B
998511CC284	DRAINAGE CALCULATIONS - SYSTEM B & E	A
998511CC285	DRAINAGE CALCULATIONS - SYSTEM C SHEET 1	B
998511CC286	DRAINAGE CALCULATIONS - SYSTEM C SHEET 2	B
998511CC287	DRAINAGE CALCULATIONS - SYSTEM C SHEET 3	A
998511CC288	DRAINAGE CALCULATIONS - SYSTEM C SHEET 4	A
998511CC289	DRAINAGE CALCULATIONS - SYSTEM C SHEET 5	B
998511CC290	DRAINAGE CALCULATIONS - SYSTEM C SHEET 6	B
998511CC291	DRAINAGE CALCULATIONS - SYSTEM C SHEET 7	B
998511CC292	DRAINAGE CALCULATIONS - SYSTEM C SHEET 8	B
998511CC293	DRAINAGE CALCULATIONS - SYSTEM C SHEET 9	B
998511CC294	DRAINAGE CALCULATIONS - SYSTEM C SHEET 10	B
998511CC295	DRAINAGE CALCULATIONS - SYSTEM C SHEET 11	A
998511CC296	DRAINAGE CALCULATIONS - SYSTEM C SHEET 12	A
998511CC297	DRAINAGE CALCULATIONS - SYSTEM C SHEET 13	A
998511CC298	DRAINAGE CALCULATIONS - SYSTEM C SHEET 14	B
998511CC299	DRAINAGE CALCULATIONS - SYSTEM D SHEET 1	A
998511CC300	DRAINAGE CALCULATIONS - SYSTEM D SHEET 2	A
998511CC301	DRAINAGE CALCULATIONS - SYSTEM D SHEET 3	A
998511CC302	DRAINAGE CALCULATIONS - SYSTEM D SHEET 4	A
998511CC303	SPECIAL PIT SHEET 1	A
998511CC304	SPECIAL PIT SHEET 2	A
998511CC305	SPECIAL PIT SHEET 3	A

INDEX		
PLAN No.	PLAN NAME	REV
998511CC306	OVERALL BASIN AND RAINGARDEN PLAN	C
998511CC307	BASIN STAGE 1 TEMPORARY WORKS	B
998511CC308	RAINGARDEN PLAN	C
998511CC309	SCOUR PROTECTION DETAILS	A
998511CC310	RAINGARDEN DETAILS SHEET 1	B
998511CC311	RAINGARDEN DETAILS SHEET 2	C
998511CC312	BASIN 2 ACCESS TRACK SETOUT PLAN DRIVEWAY DETAILS	C
998511CC313	BASIN 2 ACCESS TRACK SETOUT PLAN LONGITUDINAL SECTIONS	C
998511CC314	SOIL AND WATER MANAGEMENT PLAN SHEET 1	A
998511CC315	SOIL AND WATER MANAGEMENT PLAN SHEET 2	A
998511CC316	SOIL AND WATER MANAGEMENT PLAN SHEET 3	A
998511CC317	SOIL AND WATER MANAGEMENT NOTES	A
998511CC318	SEDIMENT BASIN CALCULATIONS	A
998511CC319	SIGNAGE AND LITEMARKING PLAN SHEET 1	A
998511CC320	SIGNAGE AND LITEMARKING PLAN SHEET 2	A
998511CC321	SIGNAGE AND LITEMARKING PLAN SHEET 3	A
998511CC322	SIGNAGE AND LITEMARKING PLAN SHEET 4	A
998511CC323	SIGNAGE AND LITEMARKING PLAN SHEET 5	A
998511CC324	ROAD C2C TURNING PATH PLAN	A

## GENERAL NOTES

- ALL WORKS ARE TO BE IN ACCORDANCE WITH BLACKTOWN CITY COUNCIL'S ENGINEERING GUIDE FOR DEVELOPMENT & WORKS SPECIFICATION - CIVIL 2005.
- SURVEY MARKS -
  - SURVEY MARKS SHOWN THUS: SHALL BE RETAINED AT ALL TIMES. WHERE RETENTION IS NOT POSSIBLE THE SUPERINTENDENT MUST BE NOTIFIED AND CONSENT RECEIVED PRIOR TO THEIR REMOVAL.
- THE CONTRACTOR SHALL LOCATE AND LEVEL ALL EXISTING SERVICES PRIOR TO COMMENCING CONSTRUCTION AND MAKE ARRANGEMENTS WITH THE RELEVANT AUTHORITY TO RELOCATE OR ADJUST IF NECESSARY.
- THE CONTRACTOR SHALL NOT ENTER UPON NOR DO ANY WORK WITHIN ADJACENT LANDS WITHOUT THE WRITTEN PERMISSION OF THE OWNERS. TO BE PROVIDED PRIOR TO THE APPROVAL OF THE PLANS.
- THE CONTRACTOR SHALL MAINTAIN SERVICES AND ALL WEATHER ACCESS AT ALL TIMES TO ADJOINING PROPERTIES.
- NO TREE SHALL BE FELLED, LOPPED OR REMOVED WITHOUT THE PRIOR APPROVAL OF COUNCIL'S ENGINEER.
- TREES TO BE RETAINED ON SITE SHALL BE PROTECTED BY SUITABLE STURDY APPROVED PROTECTIVE FENCING PRIOR TO COMMENCEMENT OF SITE WORKS.
- THE CONTRACTOR SHALL CLEAR THE SITE BY REMOVING ALL RUBBISH, FENCES, OUT-HOUSES, CAR BODIES AND DEBRIS ETC.
- FILLING IS TO BE FROM A NOMINATED SOURCE, OF SOUND CLEAN MATERIAL, FREE FROM LARGE ROCK, STUMPS, CONTAMINATED MATTER, INDUSTRIAL AND BUILDING WASTE, ORGANIC MATTER AND OTHER DEBRIS. PLACING OF FILLING ON THE PREPARED AREAS SHALL NOT COMMENCE UNTIL THE AUTHORITY TO DO SO HAS BEEN OBTAINED FROM THE COUNCIL.
- THE FILL MATERIAL THAT MAY BE RECEIVED AT THE DEVELOPMENT SITE ARE EXCAVATED NATURAL MATERIALS (ENM) AND EXCAVATED NATURAL MATERIAL (ENM) WITHIN THE MEANING OF THE PROTECTION OF THE ENVIRONMENTAL OPERATIONS ACT 1997.
- SITE FILL AREAS - THE CONTRACTOR SHALL TAKE LEVELS OF EXISTING SURFACE AFTER STRIPPING TOPSOIL AND PRIOR TO COMMENCING FILL OPERATIONS.
- ALL SITE FILLING TO BE COMPACTED TO 95% STANDARD COMPACTION AND SHALL BE CONTROLLED BY A REGISTERED SOIL LABORATORY IN ACCORDANCE WITH COUNCIL'S WORKS SPECIFICATION.
- ALL SITE REGRADING AREAS SHALL BE GRADED AT A MINIMUM 1% TO THE ENGINEER'S REQUIREMENTS.
- SURPLUS EXCAVATED MATERIAL SHALL BE PLACED WHERE DIRECTED BY THE SUPERINTENDENT.
- ALL NEW WORKS SHALL HAVE A SMOOTH JUNCTION WITH EXISTING CONDITIONS. DIMENSIONS OF ANY DETAIL SHALL NOT BE SCALED - DIMENSIONS IF IN DOUBT SHALL BE VERIFIED BY THE SUPERINTENDENT.
- ALL CONSTRUCTION AND RESTORATION WORK ON COUNCIL'S ROAD AND FOOTPATH AREA ARE TO BE CARRIED OUT IN ACCORDANCE WITH THE APPROVED DRAWINGS AND COUNCIL'S STANDARD SPECIFICATIONS.
- ALL WORKS TO BE IN ACCORDANCE WITH THE SALINITY MANAGEMENT PLAN BY DLA ENVIRONMENTAL SERVICES DL3492\_S0029172917 REVISION 1.1 MAY 2015.
- ALL STREET NAME POLES AND LIGHT POLES SHALL BE BLACK POWDER COATED IN ACCORDANCE WITH BLACKTOWN CITY COUNCIL'S ENGINEERING GUIDE FOR DEVELOPMENT.
- PROVIDE ROOF WATER OUTLET TO KERB FOR EACH PROPOSED LOT THAT DRAIN TO THE STREET.
- CONCRETE PATH PAVING MUST NOT BE PLACED UNTIL 80% OF LOTS HAVE BEEN BUILT UPON OR UNTIL APPROVED IN WRITING BY COUNCIL.
- THE HOURS OF ANY OFFENSIVE NOISE-GENERATING DEVELOPMENT WORKS SHALL BE LIMITED TO BETWEEN 7.00am TO 5.00pm, MONDAYS TO FRIDAYS, 8.00am TO 1.00pm, SATURDAYS, AND NO SUCH WORK TO BE UNDERTAKEN AT ANY TIME ON SUNDAY OR PUBLIC HOLIDAYS.

## SURFACE NOTES

- BATTER SLOPES ARE TYPICALLY 1v:5h UNLESS NOTED OTHERWISE.
- EXISTING SURFACE BASED ON BULK EARTHWORKS SURFACE REFER TO JWP PLANS 998510CC00-84.

## RAINGARDEN NOTES:

- ALL BIO-RETENTION RAINGARDEN WORKS ARE TO BE CONSTRUCTED IN ACCORDANCE WITH THE MOST RECENT VERSION OF BLACKTOWN CITY COUNCIL'S WATER SENSITIVE URBAN DESIGN (WSUD) STANDARD DRAWINGS (CURRENT VERSION REVISION C 20-17) UNLESS OTHERWISE DETAILED IN THIS SET OF DRAWINGS. URL: <https://www.blacktown.nsw.gov.au/Plan-build/Stage-2-plans-and-guidelines/Engineering-Design-Guide-Library/Water-Sensitive-Urban-Design-Standard-Drawings>

## HYDROLOGY NOTES:

- STORMWATER SYSTEM DESIGNED USING 12D DYNAMIC (ILSAX) SYSTEM.
- XP LINES ARE DUMMY PITS AND ARE USED TO MORE ACCURATELY DETERMINE APPROACH FLOWS AT UPSTREAM PITS AND SAG LOCATIONS. RESULTS ON THESE DUMMY LINES MAY NOT BE VALID/RELEVANT.
- MAXIMUM FLOW WIDTHS OF 2.0m IN GUTTERS HAVE GENERALLY BEEN ADOPTED HOWEVER EXTENDED TO 2.5m IN SOME LOCATIONS TO REDUCE THE NUMBER OF PITS REQUIRED DUE TO FLAT ROAD GRADES.

## STORMWATER NOTES

- STORMWATER DESIGN CRITERIA
  - AVERAGE RECURRENT INTERVAL
    - 1.100 MAJOR SYSTEM
    - 1.20 MINOR SYSTEM (COMMERCIAL) AND INTERALLOTMENT DRAINAGE
    - 1.10 MINOR SYSTEM
- PIPES TO BE INSTALLED TO TYPE HS2 SUPPORT IN ACCORDANCE WITH AS 3725 (1989) IN ALL CASES BACKFILL TRENCH WITH SAND TO 300mm ABOVE PIPE. WHERE PIPE IS UNDER PAVEMENTS BACKFILL REMAINDER OF TRENCH TO UNDERSIDE OF PAVEMENT WITH SAND OR APPROVED GRANULAR MATERIAL COMPACTED IN 300mm LAYERS TO MINIMUM 100% STANDARD MAXIMUM DRY DENSITY IN ACCORDANCE WITH AS 1289 5.2.1. (OR A DENSITY INDEX OF NOT LESS THAN 75)
- ALL INTERNAL WORKS WITHIN PROPERTY BOUNDARIES ARE TO COMPLY WITH THE REQUIREMENTS OF AS 3500 3.1 (1998) AND AS/NZS 3500 3.2 (1998).
- CARE IS TO BE TAKEN WITH LEVELS OF STORMWATER LINES. GRADES SHOWN ARE NOT TO BE REDUCED WITHOUT APPROVAL.
- GRATES AND COVERS SHALL CONFORM TO AS 3996.
- AT ALL TIMES DURING CONSTRUCTION OF STORMWATER PITS, ADEQUATE SAFETY PROCEDURES SHALL BE TAKEN TO ENSURE AGAINST THE POSSIBILITY OF PERSONNEL FALLING DOWN PITS.
- ALL DRAINAGE LINES THROUGH LOTS SHALL BE CONTAINED WITHIN THE FOLLOWING EASEMENTS -
  - INTERALLOTMENT DRAINS (C.D.L.) - 1.0m WIDE (UP TO 300mm DIAMETER), 1.5m WIDE (UP TO 375mm DIAMETER)
  - ALL OTHER DRAINS - REFER TO COUNCIL'S DESIGN GUIDELINES SUBDIVISION/ DEVELOPMENTS.
- DRAINAGE LINES UNDER ROADS SHALL BE BACKFILLED WITH NON-COHESIVE SAND AND HAVE 3m (AS PER BCC GUIDE) OF SUBSOIL DRAIN WRAPPED IN APPROVED FILTER SOCK, DISCHARGING INTO DOWN STREAM PITS. FOR PIPELINES GREATER THAN 5250. SUBSOIL DRAIN SHALL BE PROVIDED ON BOTH SIDES OF THE TRENCH.
- ALL STORMWATER PIPES WITHIN ROADS TO BE REINFORCED CONCRETE PIPE (RRJ) CLASS 2 OR FRC CLASS 2 UNLESS NOTED OTHERWISE.
- ALL INTERALLOTMENT DRAINAGE LINES SHALL BE LAID AT A MINIMUM GRADE OF 1% UNLESS OTHERWISE INDICATED.
- DRAINAGE LINES ON PLANS ARE DIAGRAMMATIC ONLY AND PIPE CENTRELINES SHALL ENTER AND EXIT PITS AT THE CENTRE OF THE RESPECTIVE PIT WALLS.
- STEP IRONS REQUIRED WHERE THE PIT EXCEEDS 1200 IN DEPTH. REFER TO COUNCIL DRAWING A(BS)1115
- PROVIDE A ROOF WATER OUTLET FOR EACH LOT THAT DRAINS TO STREET.
- ALL SPECIAL PITS, PITS DEEPER THAN 2m OR NON STANDARD DRAINAGE PITS CAN BE EITHER CAST INSITU WITH STRUCTURAL DESIGN AND CERTIFICATION BY OTHERS, OR "AUS PIT" CUSTOM MADE PRECAST PIT OR SIMILAR APPROVED.
- 100YR FLOW PATHS TO BE FORMED AT TIME OF CONSTRUCTION.

## SURVEY SET OUT INFORMATION NOTES:

- ALL SITE SET OUT AND CONTROL POINTS ARE TO BE CERTIFIED BY A REGISTERED SURVEYOR.
- THE INFORMATION DETAILED ON THE CERTIFIED CONSTRUCTION CERTIFICATE PLANS TAKES PRECEDENCE OVER ALL ELECTRONIC INFORMATION PROVIDED. THE ORDER OF PRIORITY FOR USE OF ALL INFORMATION PROVIDED IS AS FOLLOWS
  - CERTIFIED CONSTRUCTION CERTIFICATE DRAWINGS
  - 2D DRAFTING BASE (ELECTRONIC FILE)
  - 3D DTM/ELECTRONIC FILE
- ANY DISCREPANCY BETWEEN ANY OF THE INFORMATION CONTAINED WITHIN THESE FILES IS TO BE BROUGHT TO THE ATTENTION OF THE SUPERINTENDENT PRIOR TO CONSTRUCTION WHO WILL SEEK CLARIFICATION AND ISSUE INSTRUCTIONS ON THE APPROPRIATE COURSE OF ACTION.

## CUSTOM MADE PRECAST PIT NOTES

- DESIGN DOCUMENTATION REFLECTS PRECAST DRAINAGE PITS BEING USED FOR THE SITE. UNLESS NOTED OTHERWISE, AUSPITS OR SIMILAR APPROVED CUSTOM MADE PRECAST PITS TO BE USED.
- PITS TO COMPLY WITH THE FOLLOWING PARAMETERS
  - ARE SPECIFICALLY MANUFACTURED FOR THE PROJECT.
  - EACH PIT IS ACCOMPANIED BY A CERTIFICATE OF STRUCTURAL ADEQUACY SIGNED BY A NPER ENGINEER (STRUCTURAL)
  - THE STRUCTURAL CERTIFICATION OF THE PITS SHOULD INCLUDE ANY ADDITIONAL PRECAST ELEMENTS REQUIRED TO BRING THE PIT UP TO FINAL LEVELS ON SITE
  - PITS MUST BE FIRMLY BEDDED ON SOUND MATERIAL
  - CONCRETE IS TO BE POURED AROUND THE BASE TO AID IN STABILISATION OF THE PIT.
  - PIT FLOORS ARE TO HAVE A 1% FALL TOWARDS THE OUTLET PIPE.
  - ANY PIT REQUIRING MODIFICATION AFTER IT HAS BEEN POURED IN THE FACTORY OR DAMAGED IN TRANSPORT CANNOT BE USED.
  - ALL WORK TO BE TO THE SATISFACTION OF COUNCIL'S DEVELOPMENT INSPECTORS.
- SHOULD THE CONTRACTOR CHOOSE TO CONSTRUCT ANY PIT AS "CAST INSITU", IT'S THE CONTRACTOR'S RESPONSIBILITY TO PROVIDE DETAILED PIT DRAWINGS AND STRUCTURAL CERTIFICATION OF THE RELEVANT PITS.

This document forms part of the above approval issued under Section 109C(1)(b) of the Environmental Planning & Assessment Act, 1979.

Kerry Robinson  
SURVEYED BY  
RPS AUSTRALIA  
CAD REFERENCE:  
PR113362-DTL-14.03.26\_3D\_FOR\_ENGINEERS\_MODEL.dwg  
DATE RECEIVED: 07/04/14

LOT BOUNDARIES CALCULATED BY VMS  
CAD REFERENCE: 20260-M6.dwg  
DATE RECEIVED: 16/05/2018

C	INDEX UPDATED	NT	NT	AL	TAS	06/09/18
B	ISSUE FOR CONSTRUCTION APPROVAL	NT	TG	AM	TMS	16/07/18
A	ISSUE FOR DPI WATER	NT	TG/NS			
	AMENDMENT	DES	DRN	CKD	APR	DATE

J. WYNDHAM PRINCE CONSULTING CIVIL INFRASTRUCTURE ENGINEERS & PROJECT MANAGERS

PO Box 4366, PENRITH WESTFIELD NSW 2150  
P 02 4720 3300 F 02 4720 3399 W [www.jwprince.com.au](http://www.jwprince.com.au) E [jw@jwprince.com.au](mailto:jw@jwprince.com.au)

CLIENT	WINTEN PROPERTY GROUP
AZIMUTH MGA	
DATUM AHD	
ORIGIN	THIS DRAWING MUST NOT BE USED FOR CONSTRUCTION UNLESS SIGNED AS PART OF AN APPROVED CONSTRUCTION CERTIFICATE

ISSUED FOR CONSTRUCTION APPROVAL

NEWPARK  
PRECINCT 6  
LEGEND, INDEX & GENERAL NOTES

PLAN No	998511/CC201	C
FILE No	998511CC201	
SHEET SIZE	A1 ORIGINAL	







REFER TO DRAWING 9985/CC211 FOR CONTINUATION

REFER TO DRAWING 9985/CC212 FOR CONTINUATION

RESIDUE  
LOT 6233

PATHS NOT CONSTRUCTED AT TIME OF SURVEY  
ALL PRAM CROSSINGS AND VEHICLE CROSSINGS  
CONSTRUCTED PER ORIGINAL.

RESIDUE  
LOT 6253

I hereby certify that engineering works shown on  
this plan have been constructed generally in  
accordance with the plans and specifications  
approved by Blacktown City Council

Signature

IAN VINCENT MYERS  
Registered Land Surveyor  
VINCE MORGAN SURVEYORS PTY LTD

DATE: 22/09/2019

REF: 20260-6

#### EASEMENT NOTES

- (A) EASEMENT FOR PADMOUNT STATION 2.75m x 5.5m AND VARIABLE.
- (B) RESTRICTION ON THE USE OF LAND IN RELATION TO FIRE RATINGS OF BUILDINGS MEASURED 3m FROM THE SUBSTATION PLINTH.
- (C) RESTRICTION ON THE USE OF LAND IN RELATION TO SWIMMING POOLS MEASURED 5m FROM THE SUBSTATION PLINTH.
- (D) EASEMENT FOR DRAINAGE 1.5m WIDE
- (E) EASEMENT FOR ACCESS 0.9m WIDE
- (F) EASEMENT FOR ACCESS 1.5m WIDE

1:500 (AT A1)  
1:1000 (AT A3)

METRES

**J. WYNDHAM PRINCE**

CONSULTING CIVIL INFRASTRUCTURE ENGINEERS  
& PROJECT MANAGERS

PO BOX 4360 PARATH WESTFIELD NSW 2750  
P 02 4721 3300 F 02 4721 3399 W www.jwprince.com.au E ian@jwprince.com.au

AZIMUTH  
MGA  
DATUM  
AND  
ORIGIN

**WINTEN  
PROPERTY  
GROUP**

THIS DRAWING MUST NOT BE USED FOR  
CONSTRUCTION UNLESS SIGNED AS PART OF AN  
APPROVED CONSTRUCTION CERTIFICATE

ISSUED FOR CONSTRUCTION APPROVAL

NEWPARK  
PRECINCT 6  
ENGINEERING PLAN  
SHEET 1

PLAN No  
998511/CC209

FILE No: 998511CC209

SHEET SIZE A1 ORIGINAL

REFER TO DRAWING 9985/CC210 FOR CONTINUATION

BLACKTOWN CITY COUNCIL  
Construction Certificate - Engineering

No. 17-0765

This document forms part of the above approval  
issued under Section 109C(1)(b) of the  
Environmental Planning & Assessment Act, 1979.  
Kerry Robinson  
General Manager

RE1 (PUBLIC RECREATION)  
RESIDUE LOT 6249

TEMPORARY TURNING HEAD WITH  
REFLECTIVE GUIDE POSTS @ 1.5m

FUTURE ROAD 100

FUTURE  
DEVELOPMENT

B	ISSUE FOR CONSTRUCTION APPROVAL	NT	TG	AM	MS	16/07/18
A	ISSUE FOR DPI WATER	NT	TG NS	AM		01/06/18
	AMENDMENT	DES	DRN	CKO	APR	DATE











**I hereby certify that engineering works shown on this plan have been constructed generally in accordance with the plans and specifications approved by Blacktown City Council**

Signature.....  
IAN VINCENT MYERS  
Registered Land Surveyor  
VINCE MORGAN SURVEYORS PTY LTD

**DATE: 22/09/19**

**REF: 20260-6**

EDUCATION  
PRECINCT

**PATH NOT CONSTRUCTED AT TIME OF SURVEY**  
**SHARED USER PATH TO BE ALONG OPPOSITE SIDE**  
**OF ROAD TO SHOWN HERE (I.E. WESTERN SIDE —**  
**ADJOINING FUTURE EDUCATION PRECINCT)**

**PATHS NOT CONSTRUCTED AT TIME OF SURVEY.  
ALL PRAM CROSSINGS AND VEHICLE CROSSINGS  
CONSTRUCTED PER ORIGNAL**

## EASEMENT NOTES

- (A) EASEMENT FOR PADMOUNT STATION 2.75m x 5.5m AND VARIABLE.  
(B) RESTRICTION ON THE USE OF LAND IN RELATION TO FIRE RATINGS OF  
BUILDINGS MEASURED 3m FROM THE SUBSTATION PLINTH.  
(C) RESTRICTION ON THE USE OF LAND IN RELATION TO SWIMMING POOLS  
MEASURED 5m FROM THE SUBSTATION PLINTH.  
(D) EASEMENT FOR DRAINAGE 1.5m WIDE  
(E) EASEMENT FOR ACCESS 0.9m WIDE  
(F) EASEMENT FOR ACCESS 1.5m WIDE

REFER TO DRAWING 9985/CC210 FOR CONTINUATION

CLIENT
--------



WINTEN  
PROPERTY  
GROUP

ISSUED FOR CONSTRUCTION APPROVAL

NEWPARK  
PRECINCT 6  
ENGINEERING PLAN  
SHEET 4

PLAN No  
998511/CC212

FILE NO 998511CC212

SHEET SIZE	A1 ORIGINAL
------------	-------------

**J. WYNDHAM PRINCE**

CONSULTING CIVIL INFRASTRUCTURE ENGINEERS  
S. PROJECT MANAGERS

AZII, ITH  
1.IG  
DATUM  
AND  
OPIGIN

THIS DRAWING MUST NOT BE USED FOR  
CONSTRUCTION UNLESS SIGNED AS PART OF  
APPROVED CONSTRUCTION CERTIFICATE

B	ISSUE FOR CONSTRUCTION APPROVAL	NT	TG	AM	LIS	16/07/18
A	ISSUE FOR DPI WATER	NT	TG:NS	AM		01/06/18
	AMENDMENT	OES	CPN	CKD	APP	DATF



- (A) EASEMENT FOR PAD/MOUNT STATION 2.75m x 5.5m AND VARIABLE.
- (B) RESTRICTION ON THE USE OF LAND IN RELATION TO FIRE RATINGS OF BUILDINGS MEASURED 5m FROM THE SUBSTATION PLINTH.
- (C) RESTRICTION ON THE USE OF LAND IN RELATION TO SWIMMING POOLS MEASURED 5m FROM THE SUBSTATION PLINTH.
- (D) EASEMENT FOR DRAINAGE 1.5m WIDE
- (E) EASEMENT FOR ACCESS 0.9m WIDE
- (F) EASEMENT FOR ACCESS 1.5m WIDE

**PATHS NOT CONSTRUCTED AT TIME OF SURVEY  
ALL PRAM CROSSINGS AND VEHICLE CROSSINGS  
CONSTRUCTED PER ORIGINAL**

EXISTING GPT PART OF  
EDUCATION PRECINCT  
APPROVAL CC 17-00759

EXISTING SEDIMENT BASIN AND  
TEMPORARY WATER QUALITY AND OSD  
TO BE UTILISED BY DEVELOPMENT

BLACKTOWN CITY COUNCIL  
Construction Certificate - Engineering

This document forms part of the above approval issued under Section 109C(1)(b) of the Environmental Planning & Assessment Act. 1979.

Kerry Robinson  
General Manager

TC01

## EDUCATION PRECINCT

**PATH NOT CONSTRUCTED AT TIME OF SURVEY**  
**SHARED USER PATH TO BE ALONG OPPOSITE SIDE**  
**OF ROAD TO SHOWN HERE (I.E. WESTERN SIDE**  
**ADJOINING FUTURE EDUCATION PRECINCT)**

I hereby certify that engineering works shown on this plan have been constructed generally in accordance with the plans and specifications approved by Blacktown City Council

Signature.....  
**IAN VINCENT MYERS**  
Registered Land Surveyor  
**VINCE MORGAN SURVEYORS PTY LTD**

DATE: 22/09/19 REF: 20260-6

REFER TO DRAWING 9985/CC212 FOR CONTINUATION

1:500 (AT A1)  
1:1000 (AT A3)

10 0 10 20 30 40 50  
METRES

CLIENT

WINTEN  
PROPERTY  
GROUP

THIS DRAWING MUST NOT BE USED FOR  
CONSTRUCTION UNLESS SIGNED AS PART OF A  
APPROVED CONSTRUCTION CERTIFICATE

ISSUED FOR CONSTRUCTION APPROVAL

NEWPARK  
PRECINCT 6  
ENGINEERING PLAN  
SHEET 5

PLAN No.	998511/CC213	B
FILE No.	998511CC213	
SHEET SIZE	A1 ORIGINAL	

B	ISSUE FOR CONSTRUCTION APPROVAL	NT	TG	AM	I/S	16/07/18
A	ISSUE FOR DPI WATER.	NT	TG-NS	AM		01/06/18
	AMENDMENT	DES	DRN	CKD	APR	DATE

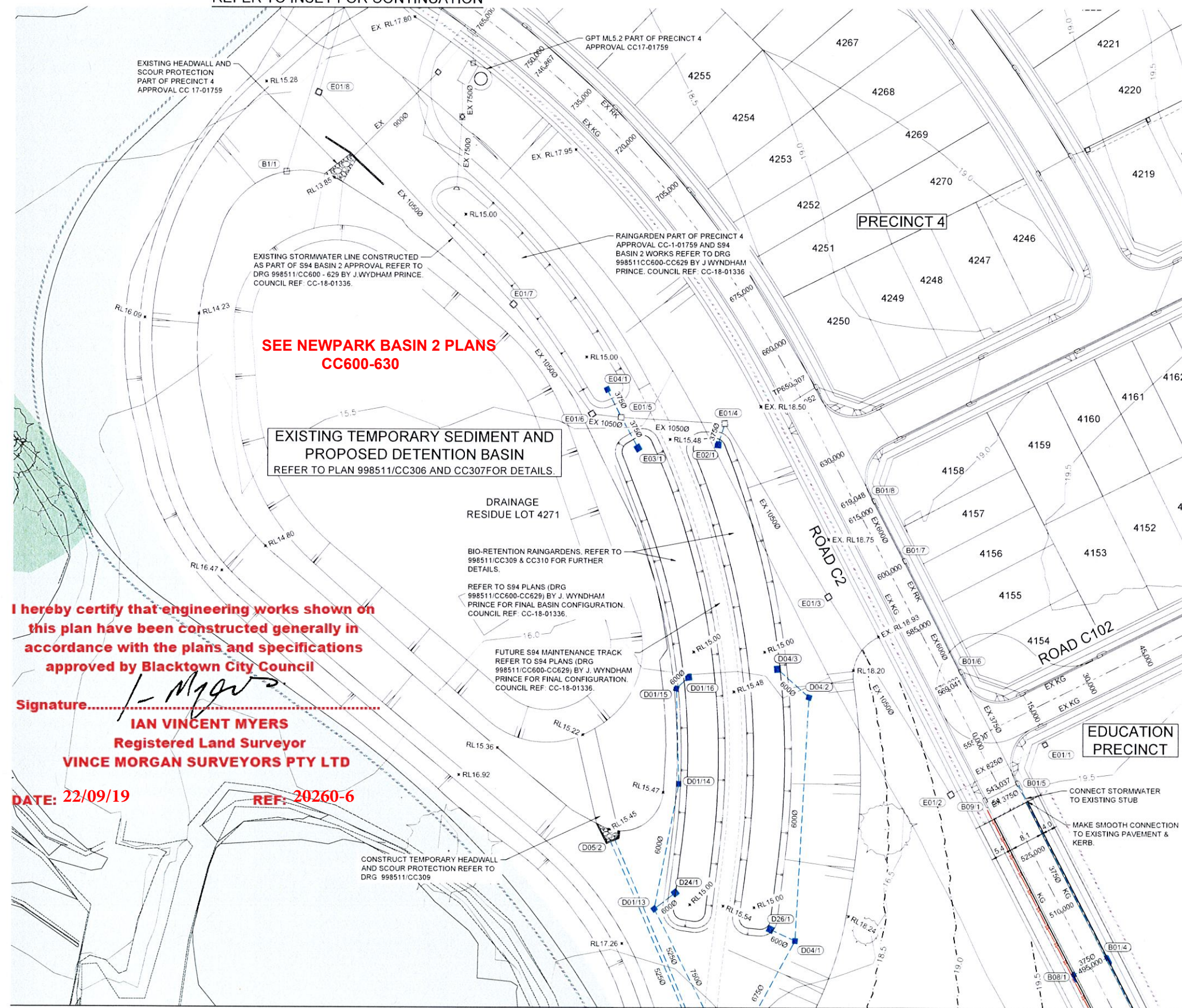
J. WYNDHAM PRINCE

CONSULTING CIVIL INFRASTRUCTURE ENGINEERS  
& PROJECT MANAGERS

P 02 4220 3300 F 02 4220 3399 W [www.iwaindoo.com.au](http://www.iwaindoo.com.au) E [iwaindoo@iwaindoo.com.au](mailto:iwaindoo@iwaindoo.com.au)



REFER TO INSET FOR CONTINUATION



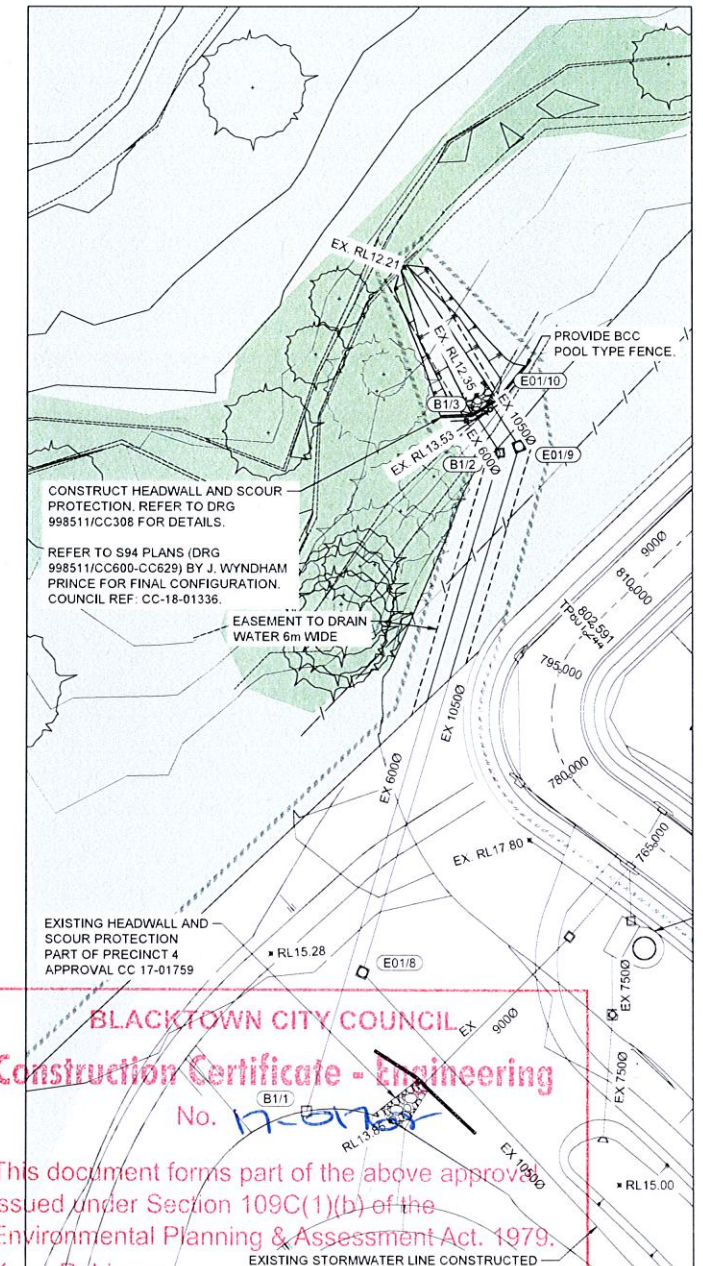
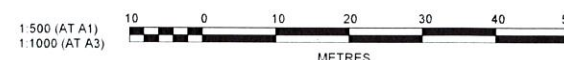
I hereby certify that engineering works shown on this plan have been constructed generally in accordance with the plans and specifications approved by Blacktown City Council

Signature: *I. Morgan*  
**IAN VINCENT MYERS**  
Registered Land Surveyor  
**VINCE MORGAN SURVEYORS PTY LTD**

DATE: 22/09/19

REF: 20260-6

REFER TO DRAWING 9985/CC211 FOR CONTINUATION



**BLACKTOWN CITY COUNCIL**  
**Construction Certificate - Engineering**  
No. *17-01759*

This document forms part of the above approval issued under Section 109C(1)(b) of the Environmental Planning & Assessment Act, 1979.

Kerry Robinson  
General Manager  
per: *[Signature]*

NOTE:  
THESE PLANS IS TO BE READ IN CONJUNCTION WITH S94 BASIN 2 WORKS REFER TO DRG 998511/CC600 - CC629 BY J. WYNDHAM PRINCE (COUNCIL REF: CC-18-01336).

CONSIDERATION SHALL BE GIVEN TO S94 PLANS AND APPROVAL PLANNING AS WELL AS WORKS IN KIND (WIK).

Printed: 10 September, 2018 10:21:35 AM File Name: J:\9985DICC - Construction Certificate Approval Plans\PK11 CENTRAL PRECINCTS\998511CC214.dwg

C	BASIN 2 REFERENCES UPDATED	NT	NT	AM	MS	06/09/18			
B	ISSUE FOR CONSTRUCTION APPROVAL	NT	TG	AM	MS	16/07/18			
A	ISSUE FOR DPI WATER	NT	TG/NS	AM		01/06/18			
	AMENDMENT	DES	DRN	CKD	APR	DATE			

**J. WYNDHAM PRINCE** CONSULTING CIVIL INFRASTRUCTURE ENGINEERS & PROJECT MANAGERS

PO Box 4366 PENRITH WESTFIELD NSW 2750  
P 02 4720 3300 F 02 4720 3399 W www.jwprince.com.au E jwprince@jwprince.com.au

CLIENT: **WINTEN PROPERTY GROUP**  
AZIMUTH MGA  
DATUM: AHD  
ORIGIN: THIS DRAWING MUST NOT BE USED FOR CONSTRUCTION UNLESS SIGNED AS PART OF AN APPROVED CONSTRUCTION CERTIFICATE.

**ISSUED FOR CONSTRUCTION APPROVAL**

**NEWPARK PRECINCT 6**  
ENGINEERING PLAN  
SHEET 6

PLAN No: **998511/CC214** C  
FILE No: 998511CC214  
SHEET SIZE: A1 ORIGINAL