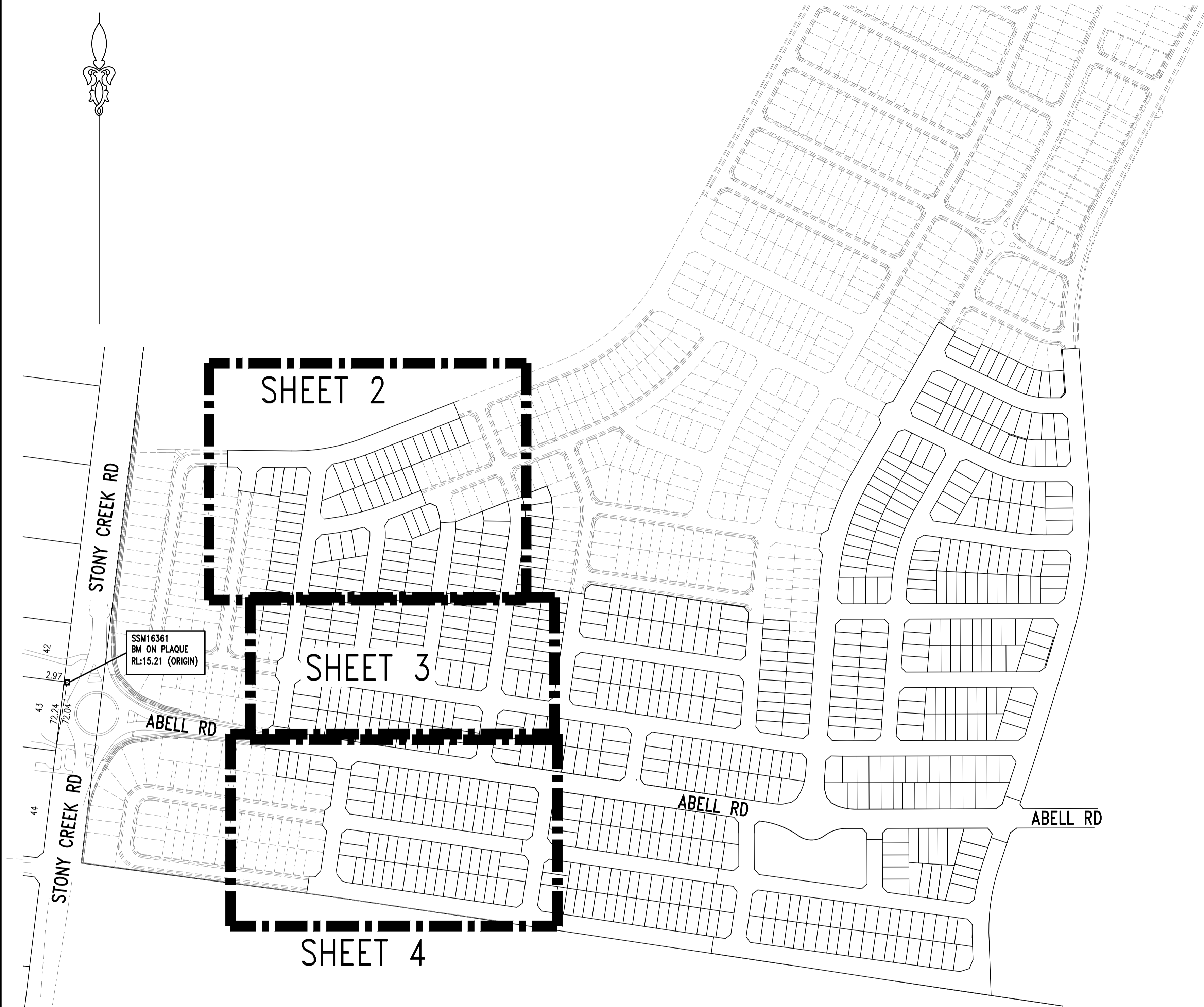


0 10 20 30 40 50 METRES  
M.G.A. ZONE 56 M.G.A. DATUM: GDA2020

- DESIGNER AND WATER SERVICING COORDINATOR:  
QALCHEK PTY LTD (CERTIFIED No.289)  
UNIT 2, LEVEL 1, 15-17 DAVID ROAD, EMU PLAINS 2750  
PH. No. (02) 4722 8181  
  
FOR:  
WOORONG PARK PTY LTD  
c/o J WYNDHAM PRINCE  
580 HIGH STREET, PENRITH, NSW 2750  
PH. 02 4720 3300
- THE WORKS AND MATERIALS ARE IN ACCORDANCE WITH THE SEWERAGE CODE OF AUSTRALIA WSA 02-2002-2.2 SYDNEY WATER EDITION VERSION 4 (2017) INCLUDING THE SYDNEY WATER SUPPLEMENT & APPENDICES AS WELL AS THE SYDNEY WATER TECHNICAL SPECIFICATION - CIVIL VERSION 9.0.
- ALL STRUCTURES WERE CONSTRUCTED TO FINISHED SURFACE LEVELS.  
ALL LEVELS REFER TO FINISHED SURFACE LEVEL.
- ALL BUILDING LAYOUTS, FINISHED SURFACE LEVELS, STORMWATER INFORMATION, AND GENERAL CIVIL ENGINEERING DETAILS TAKEN FROM:  
CIVIL BASEPLAN: 998512-P7D and Abell Road-BASE FOR SERVICE DESIGN.dwg (SUPPLIED 23.06.2021 BY JWP)  
SURFACE INFORMATION: DESIGN P7 TRIANGLES.dwg (SUPPLIED 23.06.2021 BY JWP)  
SMD INFORMATION SUBDIVISION: 9985-12-CC12001-12803.pdf (SUPPLIED 23.06.21 BY JWP)
- THE MINIMUM NUMBER OF FIELD COMPACTION TESTS REQUIRED TO SATISFY THE SEWERAGE CODE OF AUSTRALIA ARE:  
PIPE EMBEDMENT ZONE: 0 TESTS CONDUCTED (LETTER PROVIDED)  
TRENCH FILL ZONE (NON TRAFFICABLE): 82 TESTS CONDUCTED  
TRENCH FILL ZONE (TRAFFICABLE): 0 TESTS CONDUCTED (LETTER PROVIDED)  
TRENCH FILL ZONE (MAINTENANCE STRUCTURES): 200 TESTS CONDUCTED  
TRENCH FILL ZONE - TOTAL: 282 TESTS CONDUCTED
- ALL EXCAVATION, SHORING EXCAVATION AND STABILITY OF ADJACENT STRUCTURES/SERVICES/DWELLINGS WAS THE RESPONSIBILITY OF THE CONSTRUCTOR.
- ALL PCS CONNECTIONS TO I.S. ARE AT 0.7m & 45° TO MAIN UNLESS OTHERWISE INDICATED.  
— DENOTES STANDARD PCS CONNECTION (REFER DTC-2120 ISSUE A DATE 18.03.15)
- THE WORKS WERE CONSTRUCTED IN ACCORDANCE WITH SYDNEY WATER'S DEEMED TO COMPLY DRAWINGS:  
  
FOR ALL MH'S  
DTC-2000 (ISSUE C 18.03.15),  
DTC-2203 (ISSUE B 18.03.15),  
DTC-2220 (ISSUE D 18.03.15),  
DTC-2221 (ISSUE B 01.03.13),  
DTC-2222 (ISSUE C 18.03.15)
- PIPES CONCRETE ENCASED SHOWN ACCORDINGLY: — REFER TO SEW-1205-V
- W.A.C. PREPARED FROM INFORMATION SUPPLIED (IN PART BY QALCHEK PTY LTD) & BY DARACON.



LOCALITY PLAN & BENCHMARK DIAGRAM

(NOT TO SCALE)

1	WORK AS CONSTRUCTED	JV	09.02.23
C	EX MH LID LEVEL ADJUSTED	TT	30.08.22
B	TMS ADDED AT END OF L3	FJ	07.10.21
A	ISSUE FOR APPROVAL	FJ	10.07.21
No.	AMENDMENT DESCRIPTION	BY	DATE

PLAN TO BE READ IN CONJUNCTION WITH CURRENT SYDNEY WATER STANDARDS SYDNEY WATER CORPORATION

PRIOR TO COMMENCEMENT OF EXCAVATION FOR PROPOSED AND EXISTING SERVICES CONTACT:-  
DIAL BEFORE YOU DIG Ph. 1100  
ELECTRICITY Ph.  
GAS Ph.  
TELECOMMUNICATIONS Ph.  
SYDNEY WATER Ph. 132 092  
GIVING AT LEAST 48 HOURS NOTICE.

UTILITIES			
TYPE	DATE	REF.	
WATER: DN100 Water	02.07.21	DESIGN	
NEW WATER: DN100 Water	02.07.21	DESIGN	
STORMWATER: SMD	23.06.21	ENG.PLAN	
NEW STORMWATER: SMD	23.06.21	ENG.PLAN	
SSM 16361 (ORIGIN)	05.05.21	SCMS	

WORK AS CONSTRUCTED CERTIFICATION			
DEVELOPER	WOORONG PARK PTY LTD		
WATER SERVICE CO-ORDINATOR	QALCHEK PTY LTD		
CONSTRUCTOR	C.J. DOYLE		
COMPLETED	09.02.2023	W.A.C. PREPARED	09.02.2023
DESIGNER	QALCHEK PTY LTD		

I CERTIFY THAT THE WORKS HAVE BEEN CONSTRUCTED IN ACCORDANCE WITH THE WORK AS CONSTRUCTED DRAWINGS.

PIPE SCHEDULE					
SIZE DN	TYPE	CLASS	LENGTH	PIPE JOINING METHOD / NOTES	
225	U.P.V.C.	SN8	180.65	RRJ	
150	U.P.V.C.	SN8	2138.75	RRJ	
100	U.P.V.C.	SN10	412.10	SWJ	

DESIGN HEAD. . . m NO BOUNDARY TRAPS REQUIRED.

AUSTRALIAN HEIGHT DATUM
SCALES
PLAN . 1:500 SECTION { HOR. . 1:500 . VERT. . 1:125 .
CROSS SECTIONS . . . . . NATURAL
LENGTHS, DEPTHS & LEVELS ARE IN METRES.

NO AMENDMENTS ARE TO BE MADE TO THIS PLAN WITHOUT REFERENCE TO SYDNEY WATER. THIS PLAN IS NOT NECESSARILY UP TO DATE OR CORRECT AND SYDNEY WATER ACCEPTS NO RESPONSIBILITY.

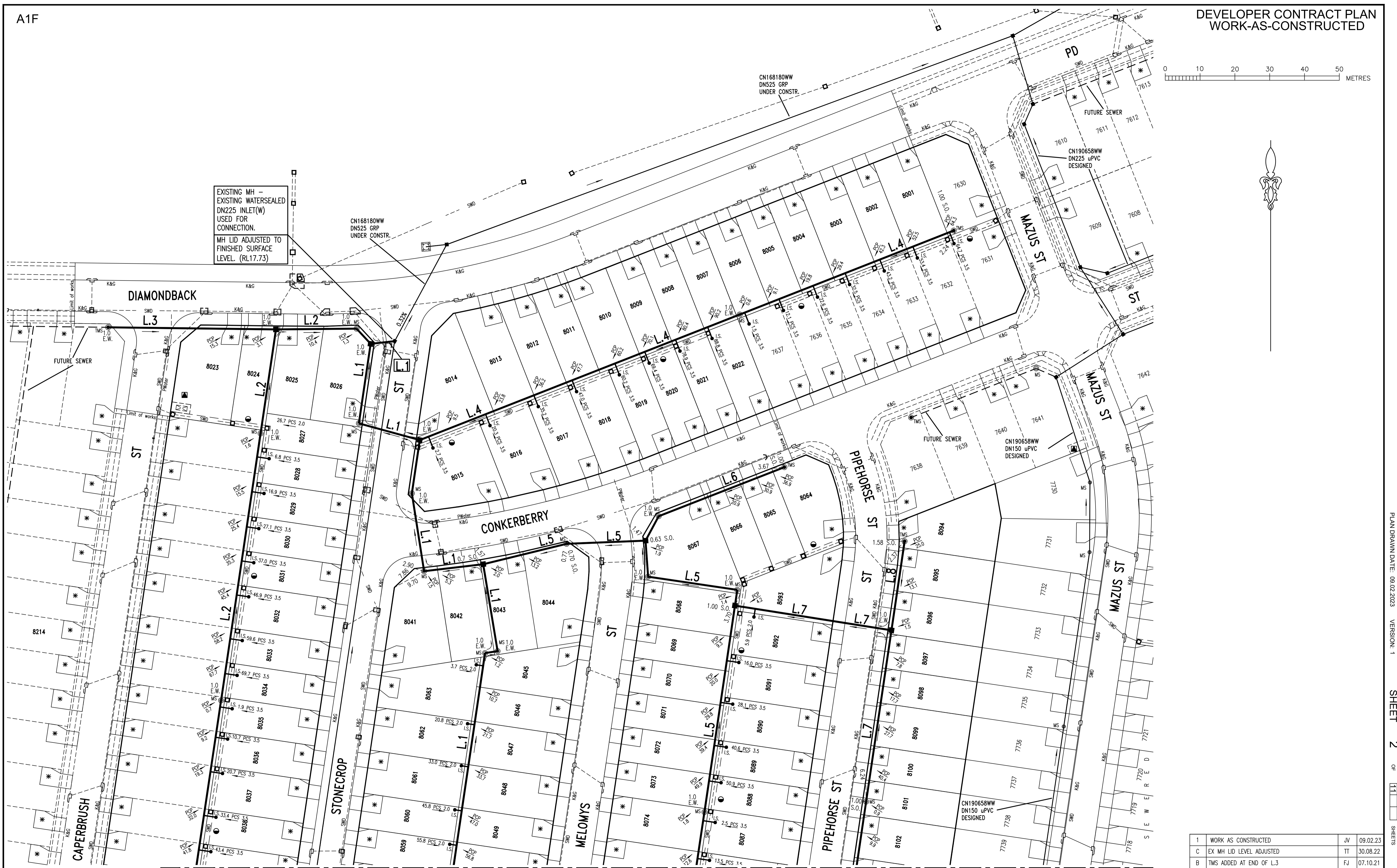
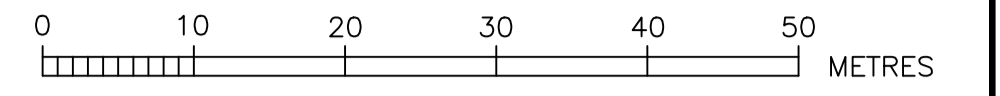
U.B. DIRECTORY . . . MAP126/B13 45th Edition . .

SHEET . 1 . OF . 11 . File No. N/A . . . . .

**Sydney WATER** SYDNEY WATER CORPORATION

Case No. 190986WW

**BLACKTOWN SEWERAGE**  
DRAINS TO  
RICHMOND ROAD CARRIER VIA SP1160  
RIVERSTONE S.T. 0042



EXISTING MH -  
EXISTING WATERSEALED  
DN225 INLET(W)  
USED FOR  
CONNECTION.  
MH LID ADJUSTED TO  
FINISHED SURFACE  
LEVEL. (RL17.73)

CN168180WW  
DN525 GRP  
UNDER CONSTR.

CN190658WW  
DN225 uPVC  
DESIGNED

CN190658WW  
DN150 uPVC  
DESIGNED

CN190658WW  
DN150 uPVC  
DESIGNED

CONTINUED ON SHEET 3

PLAN DRAWN DATE: 09.02.2023 VERSION: 1 SHEET 2 OF 11 SHEETS

1	WORK AS CONSTRUCTED	JV	09.02.23
C	EX MH LID LEVEL ADJUSTED	TT	30.08.22
B	TMS ADDED AT END OF L.3	FJ	07.10.21
A	ISSUE FOR APPROVAL	FJ	10.07.21
No.	AMENDMENT DESCRIPTION	BY	DATE

- EASEMENT FOR DRAINAGE 1.5 WIDE
- \* DRIVEWAY
- ▲ SUBSTATION

**WORK AS CONSTRUCTED CERTIFICATION**

DEVELOPER: WOORONG PARK PTY LTD.  
W.S.C.: QALCHEK PTY LTD.  
CONSTRUCTOR: C.J. DOYLE  
COMPLETED: 09.02.2023  
W.A.C. PREPARED: 09.02.2023

DESIGNER: QALCHEK PTY LTD.

I CERTIFY THAT THE WORKS HAVE BEEN CONSTRUCTED IN ACCORDANCE WITH THE WORK AS CONSTRUCTED DRAWINGS

**Sydney WATER** SYDNEY WATER CORPORATION  
Case No. 190986WW SHT 2 OF 11 SHTS.  
FOR DETAILS OF SERVICES SEE SHEET 1

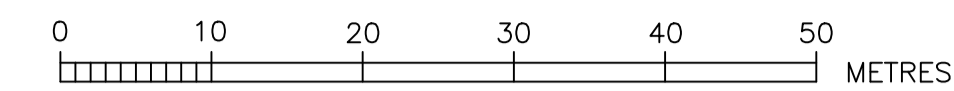
DESIGNED: T.T. DRAFTED: J.V. VERIFIED: D.L. REVIEWED: D.L. APPROVED: D.L. ISSUED: 09.02.2023

A1F  
'A'

CONTINUED ON SHEET 2

DEVELOPER CONTRACT PLAN  
WORK-AS-CREATED

'A'



'B'

CONTINUED ON SHEET 4

'B'

LINE No.	CHAINAGE	TYPE (MH/MS/MC)	DN RISER	CLASS OF COVER	MATERIAL (PVC-U, PE, PP, GRP, CAST IN SITU CONC, PRE-CAST CONC, OTHER - SPECIFY)	COMMENTS (BRAND/DTC No/ISSUE, DATE/NA, OTHER AS REQUIRED)
1	6.93	MH	1050	D	IN-SITU CONCRETE	DTC-2203
	30.03	MS	225	D	AS PER WSA-137	AS PER WSA-137
	48.16	MH	1050	D	IN-SITU CONCRETE	DTC-2203
	63.63	MS	225	D	AS PER WSA-137	AS PER WSA-137
	86.26	MS	225	D	AS PER WSA-137	AS PER WSA-137
	103.35	MH	1050	D	IN-SITU CONCRETE	DTC-2203
	128.65	MS	225	B	AS PER WSA-137	AS PER WSA-137
	132.30	MS	225	B	AS PER WSA-137	AS PER WSA-137
	220.68	MH	1050	B	IN-SITU CONCRETE	DTC-2203
	246.34	MS	225	D	AS PER WSA-137	AS PER WSA-137
	264.02	MH	1050	D	IN-SITU CONCRETE	DTC-2203
	289.85	MS	300	B	AS PER WSA-137	AS PER WSA-137, CONNECTION TO RISER
	320.95	MS	225	B	AS PER WSA-137	AS PER WSA-137
	434.10	MH	1050	D	IN-SITU CONCRETE	DTC-2203
	450.22	TMS	225	B	AS PER WSA-137	AS PER WSA-137
2	5.94	MS	225	D	AS PER WSA-137	AS PER WSA-137
	29.09	MH	1050	D	IN-SITU CONCRETE	DTC-2203
	59.30	MS	225	B	AS PER WSA-137	AS PER WSA-137
	136.80	MS	225	B	AS PER WSA-137	AS PER WSA-137
	200.47	MH	1050	B	IN-SITU CONCRETE	DTC-2203
3	48.21	TMS	225	D	AS PER WSA-137	AS PER WSA-137
4	98.72	MS	225	B	AS PER WSA-137	AS PER WSA-137
	164.72	TMS	225	B	AS PER WSA-137	AS PER WSA-137
5	24.64	MS	225	D	AS PER WSA-137	AS PER WSA-137
	47.35	MH	1050	D	IN-SITU CONCRETE	DTC-2203
	57.73	MS	225	D	AS PER WSA-137	AS PER WSA-137
	83.62	MS	225	B	AS PER WSA-137	AS PER WSA-137
	88.18	MH	1050	B	IN-SITU CONCRETE	DTC-2203
	148.12	MS	225	B	AS PER WSA-137	AS PER WSA-137
	201.72	MH	1050	B	IN-SITU CONCRETE	DTC-2203
	217.28	TMS	225	B	AS PER WSA-137	AS PER WSA-137
6	7.98	MS	225	D	AS PER WSA-137	AS PER WSA-137
	46.73	TMS	225	D	AS PER WSA-137	AS PER WSA-137
7	45.50	MH	1050	D	IN-SITU CONCRETE	DTC-2203
	95.26	MS	225	D	AS PER WSA-137	AS PER WSA-137
	178.69	TMS	300	D	AS PER WSA-137	AS PER WSA-137
	184.93	MS	225	D	AS PER WSA-137	AS PER WSA-137
	203.18	TMS	225	D	AS PER WSA-137	AS PER WSA-137

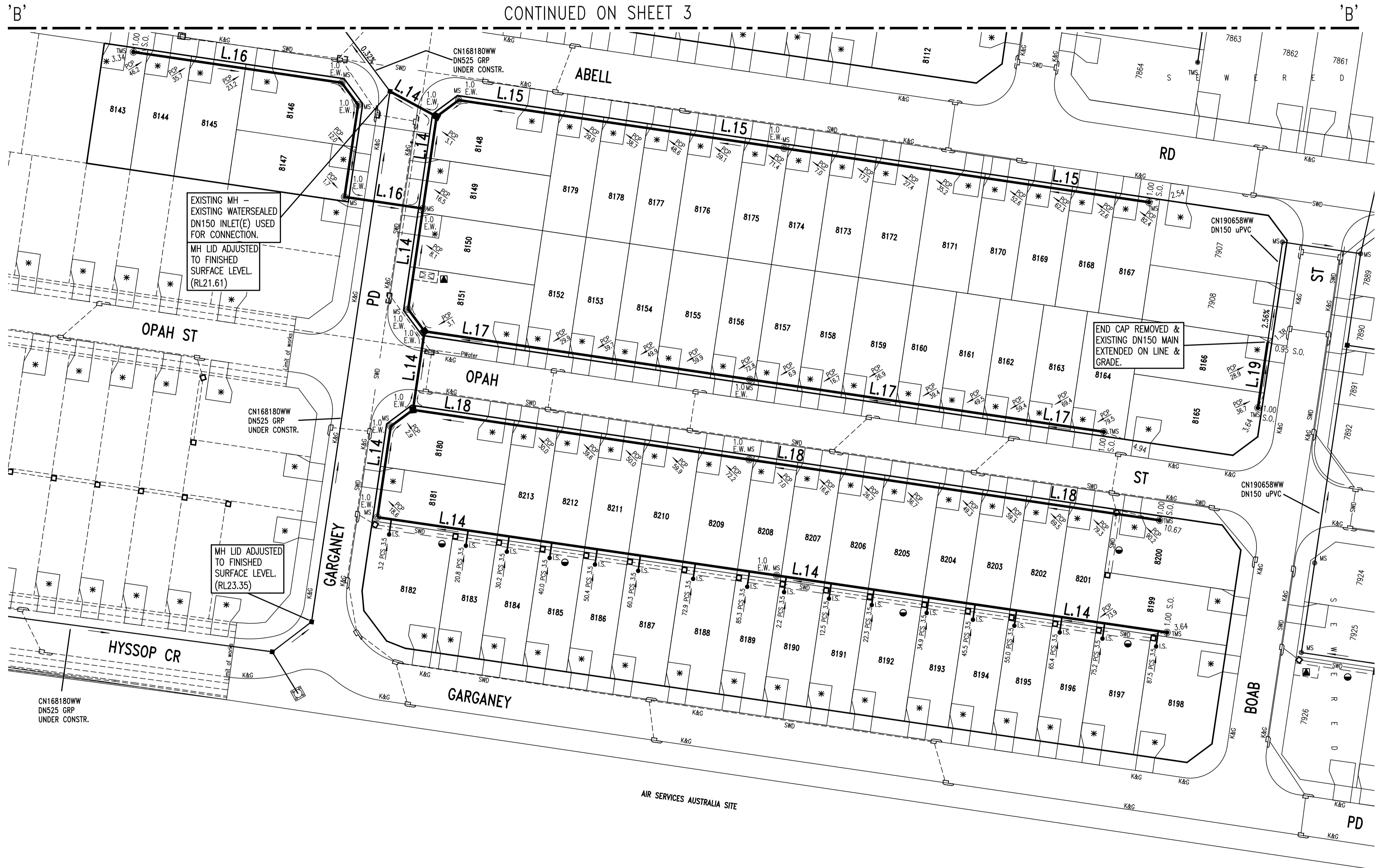
LINE No.	CHAINAGE	TYPE (MH/MS/MC)	DN RISER	CLASS OF COVER	MATERIAL (PVC-U, PE, PP, GRP, CAST IN SITU CONC, PRE-CAST CONC, OTHER - SPECIFY)	COMMENTS (BRAND/DTC No/ISSUE, DATE/NA, OTHER AS REQUIRED)
8	25.85	TMS	225	B	AS PER WSA-137	AS PER WSA-137
9	13.45	TMS	225	B	AS PER WSA-137	AS PER WSA-137
10	16.00	TMS	225	B	AS PER WSA-137	AS PER WSA-137
11	13.58	TMS	225	B	AS PER WSA-137	AS PER WSA-137
12	17.24	TMS	225	B	AS PER WSA-137	AS PER WSA-137
13	14.19	TMS	225	B	AS PER WSA-137	AS PER WSA-137
14	12.02	MH	1050	D	IN-SITU CONCRETE	DTC-2203
	33.11	MS	225	D	AS PER WSA-137	AS PER WSA-137
	56.20	MS	225	D	AS PER WSA-137	AS PER WSA-137
	62.44	MH	1050	D	IN-SITU CONCRETE	DTC-2203
	80.44	MH	1050	D	IN-SITU CONCRETE	AS PER WSA-137
	86.68	MS	225	D	AS PER WSA-137	AS PER WSA-137
	107.53	MS	225	D	AS PER WSA-137	AS PER WSA-137
	199.08	MS	225	B	AS PER WSA-137	AS PER WSA-137
	288.58	TMS	225	B	AS PER WSA-137	AS PER WSA-137
15	6.24	MS	225	D	AS PER WSA-137	AS PER WSA-137
	80.87	MS	225	D	AS PER WSA-137	AS PER WSA-137
	164.53	TMS	225	D	AS PER WSA-137	AS PER WSA-137
16	18.00	MS	225	D	AS PER WSA-137	AS PER WSA-137
	39.09	MS	225	D	AS PER WSA-137	AS PER WSA-137
	45.33	MS	225	D	AS PER WSA-137	AS PER WSA-137
	93.10	TMS	225	D	AS PER WSA-137	AS PER WSA-137
17	74.63	MS	225	D	AS PER WSA-137	AS PER WSA-137
	155.79	TMS	225	D	AS PER WSA-137	AS PER WSA-137
18	77.13	MS	225	D	AS PER WSA-137	AS PER WSA-137
	171.26	TMS	225	D	AS PER WSA-137	AS PER WSA-137
19	15.02	TMS	225	D	AS PER WSA-137	AS PER WSA-137

- EASEMENT FOR DRAINAGE 1.5 WIDE
- \* DRIVEWAY
- SUBSTATION

No.	AMENDMENT DESCRIPTION	BY	DATE
1	WORK AS CONSTRUCTED	JV	09.02.23
C	EX MH LID LEVEL ADJUSTED	TT	30.08.22
B	TMS ADDED AT END OF L.3	FJ	07.10.21
A	ISSUE FOR APPROVAL	FJ	10.07.21

WORK AS CONSTRUCTED CERTIFICATION		SYDNEY WATER CORPORATION	
DEVELOPER	WOORONG PARK PTY LTD	<b>Sydney WATER</b>	Case No. 190986WW SHT 3 OF 11 SHTS.
W.S.C.	QALCHEK PTY LTD		
CONSTRUCTOR	C.J. DOYLE	DESIGNER	QALCHEK PTY LTD
COMPLETED	09.02.2023		
W.A.C. PREPARED	09.02.2023	I CERTIFY THAT THE WORKS HAVE BEEN CONSTRUCTED IN ACCORDANCE WITH THE WORK AS CONSTRUCTED DRAWINGS	
FOR DETAILS OF SERVICES SEE SHEET 1		SYDNEY WATER CORPORATION	

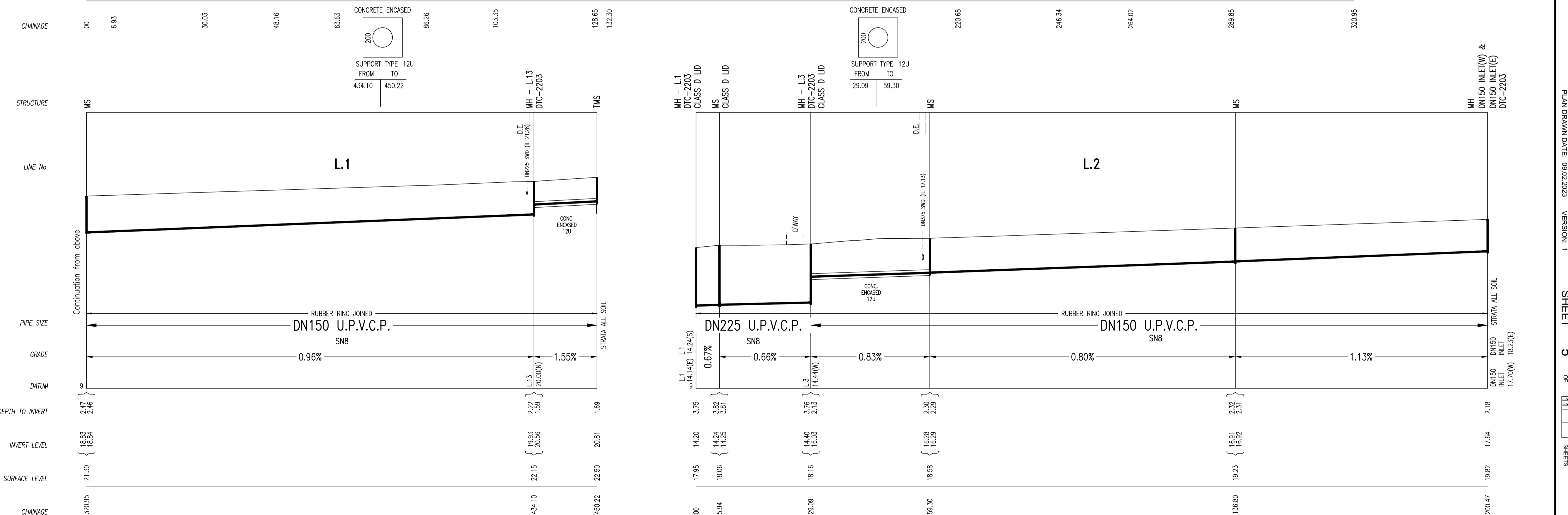
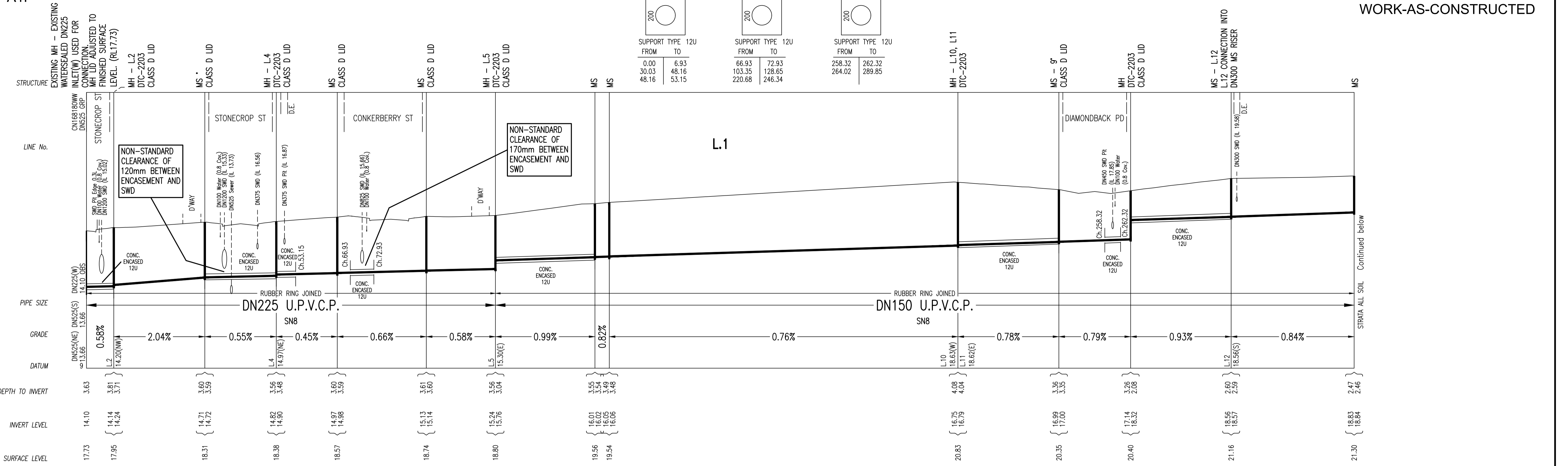
PLAN DRAWN DATE: 09.02.2023      VERSION: 1      SHEET 3 OF 11 SHEETS



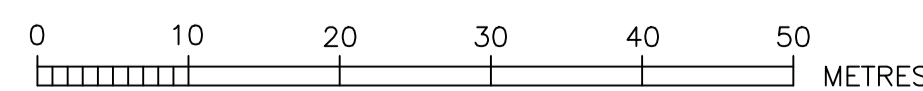
- EASEMENT FOR DRAINAGE 1.5 WIDE
- \* DRIVEWAY
- SUBSTATION

No.	AMENDMENT DESCRIPTION	BY	DATE
1	WORK AS CREATED	JV	09.02.23
C	EX MH LID LEVEL ADJUSTED	TT	30.08.22
B	TMS ADDED AT END OF L.3	FJ	07.10.21
A	ISSUE FOR APPROVAL	FJ	10.07.21

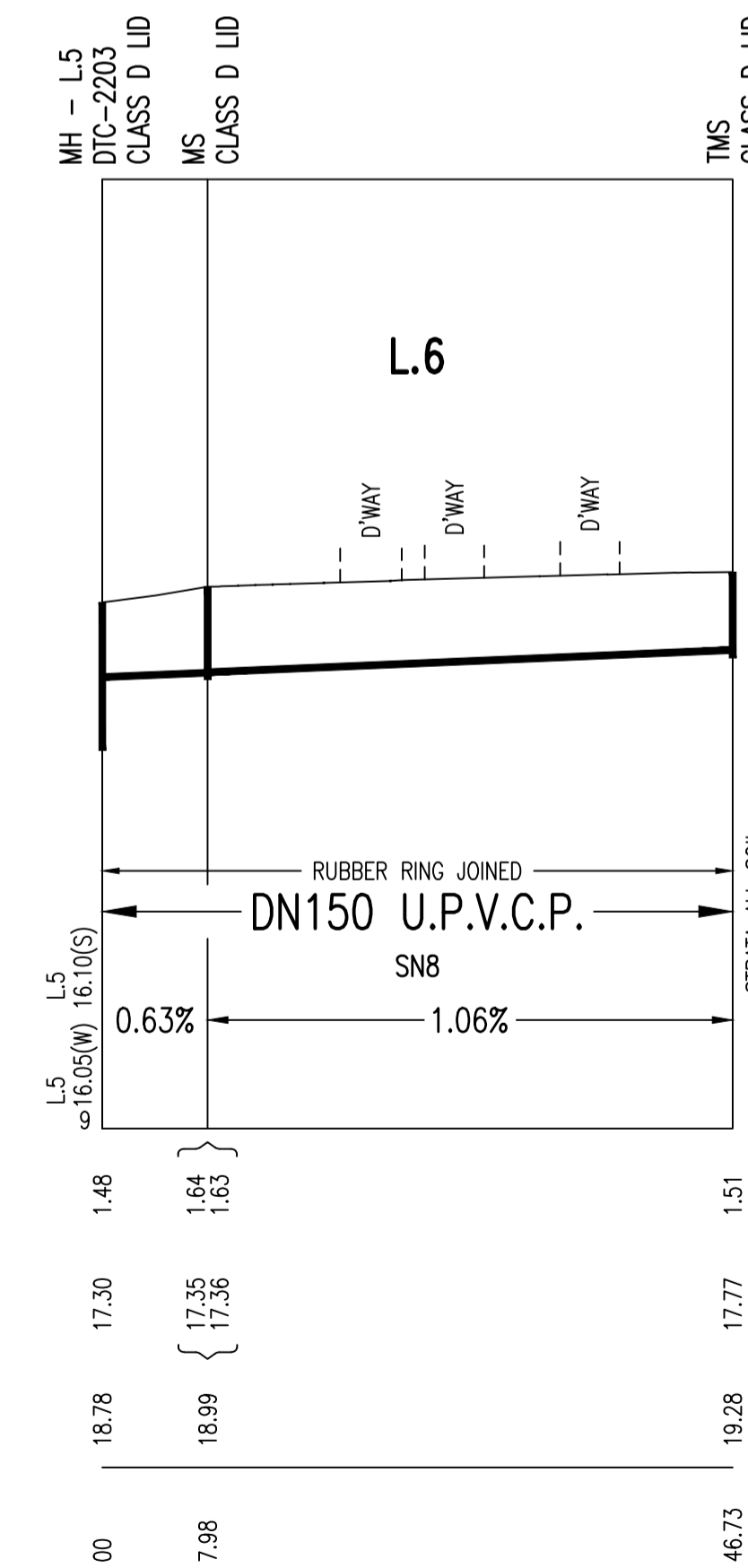
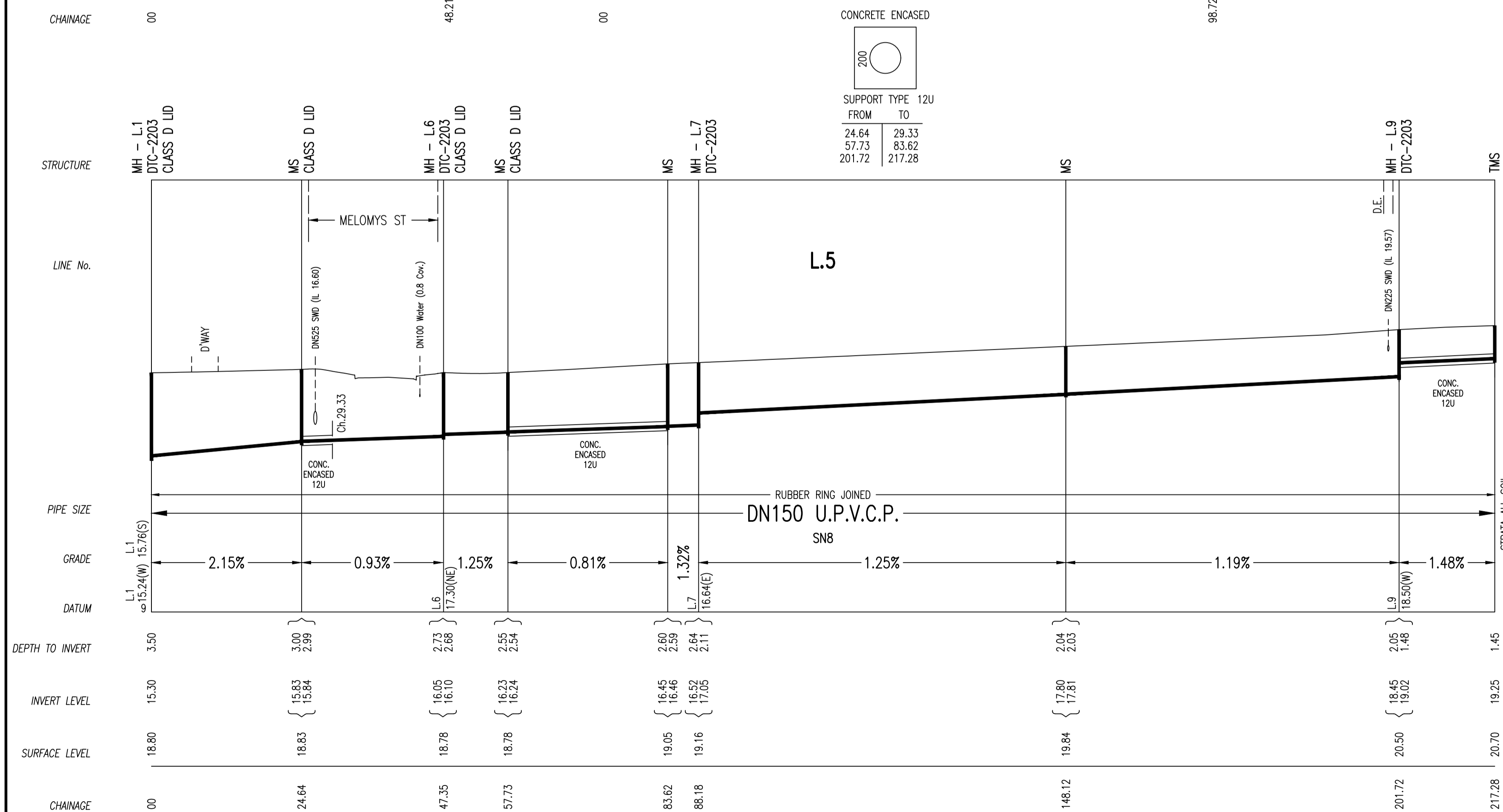
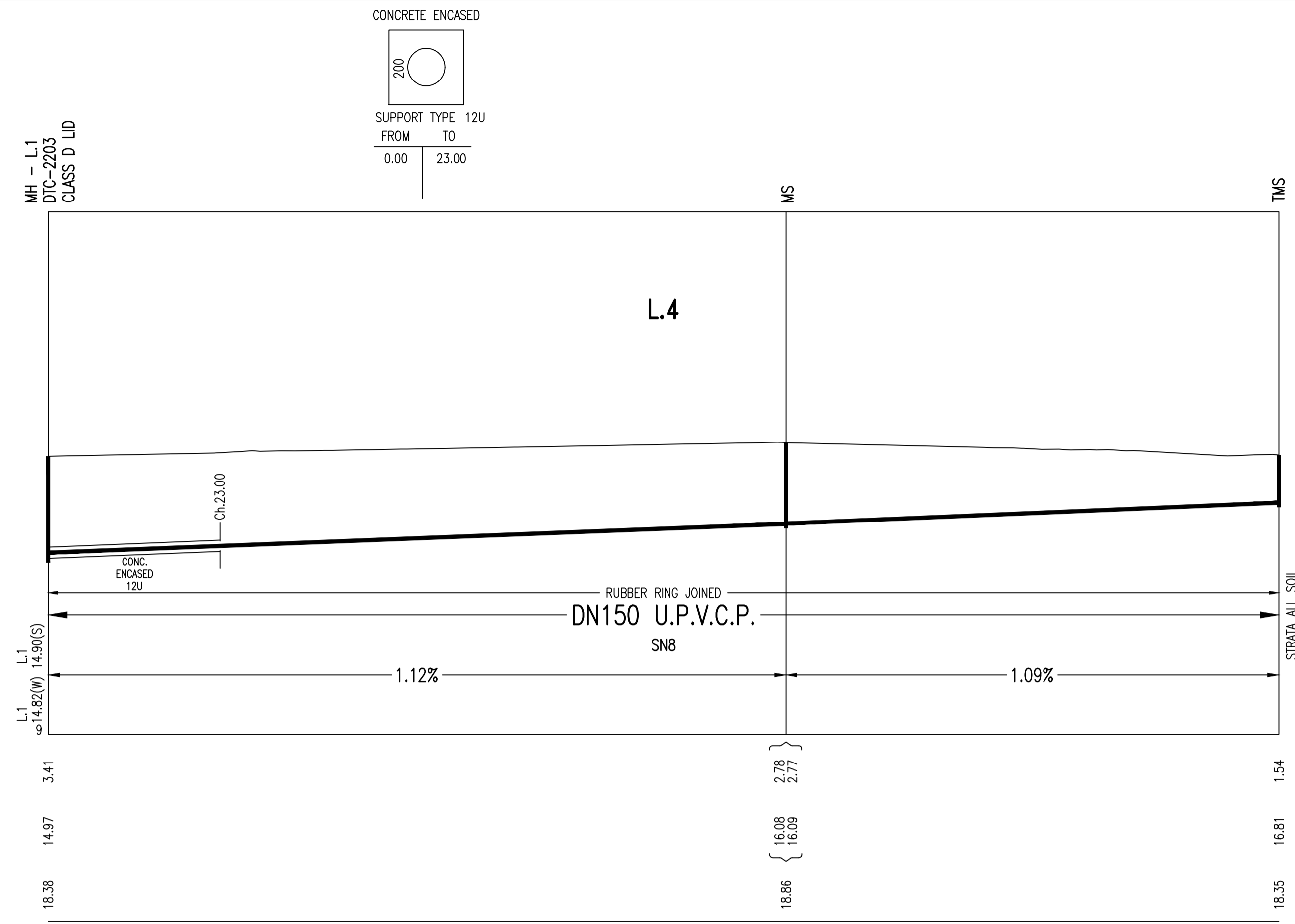
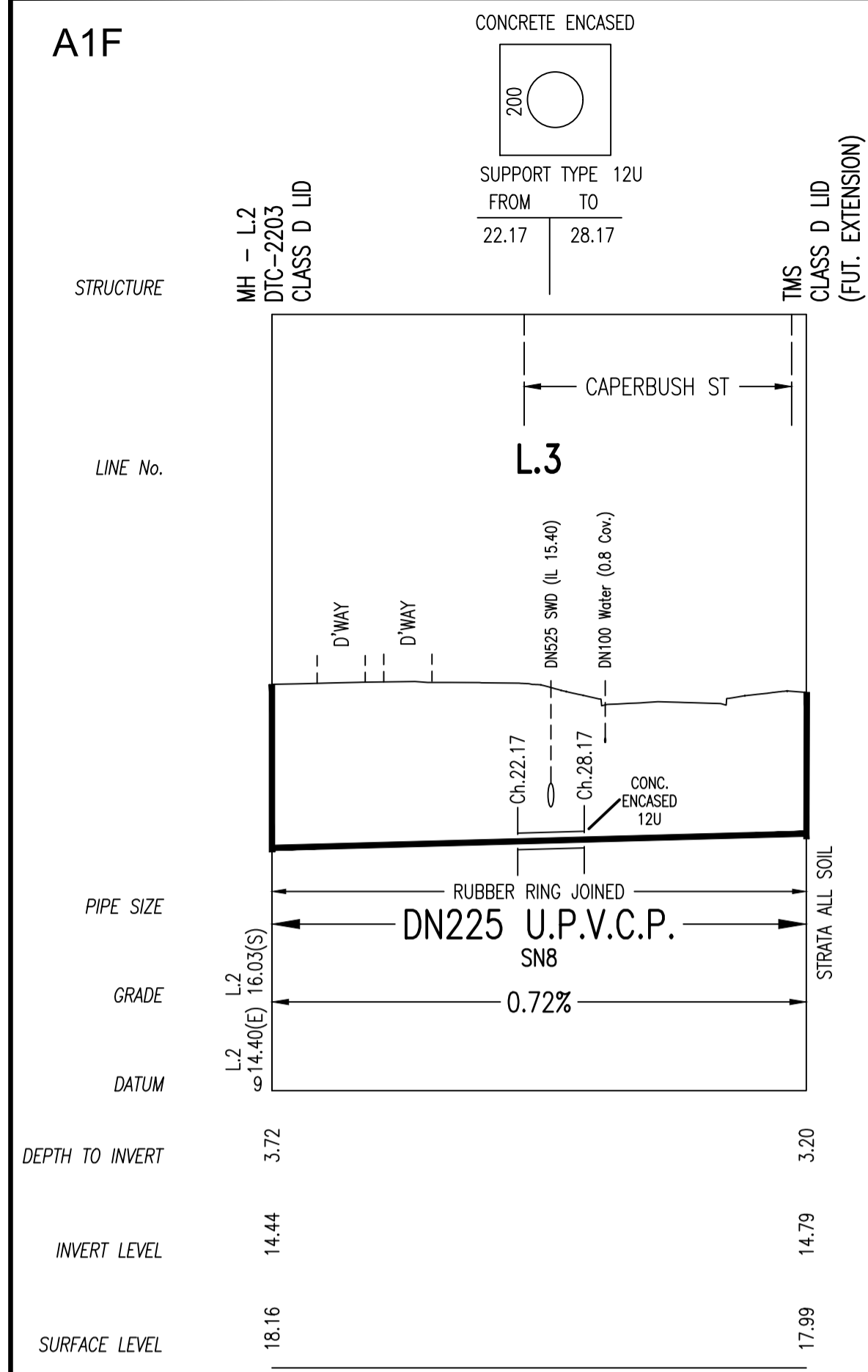
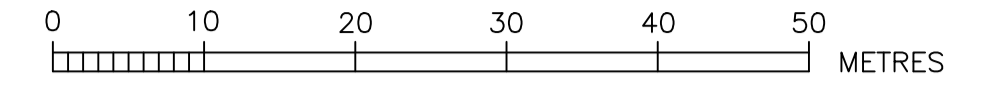
WORK AS CREATED CERTIFICATION		SYDNEY WATER CORPORATION	
DEVELOPER	WOODRONG PARK PTY LTD	<b>Sydney WATER</b>	Case No. 190986WW SHT 4 OF 11 SHTS.
W.S.C.	QALCHEK PTY LTD		
CONSTRUCTOR	C.J. DOYLE	COMPLETED 09.02.2023	
W.A.C. PREPARED 09.02.2023		DESIGNER QALCHEK PTY LTD	
I CERTIFY THAT THE WORKS HAVE BEEN CREATED IN ACCORDANCE WITH THE WORK AS CREATED DRAWINGS		FOR DETAILS OF SERVICES SEE SHEET 1	



No.	AMENDMENT DESCRIPTION	BY	DATE
1	WORK AS CREATED	JV	09.02.23
2	EX MH LID LEVEL ADJUSTED	TT	30.08.22
3	TMS ADDED AT END OF L3	FJ	07.10.21
4	ISSUE FOR APPROVAL	FJ	10.07.21



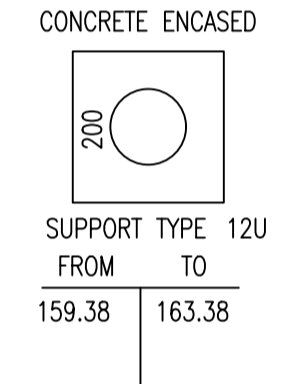
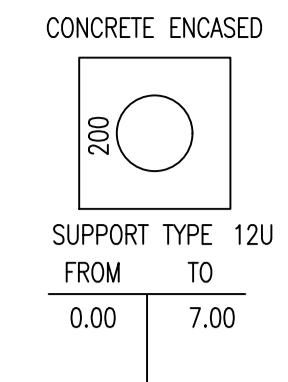
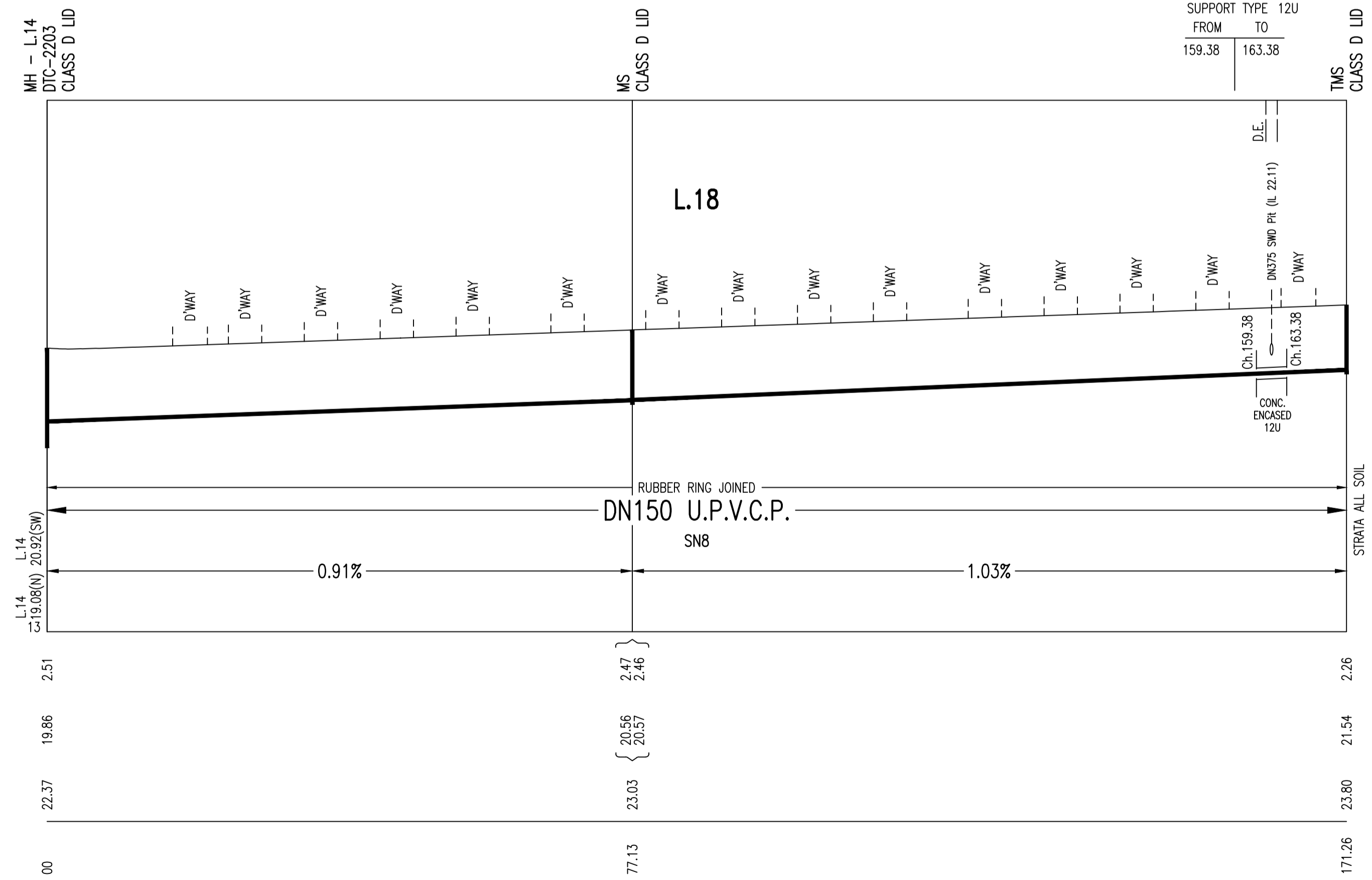
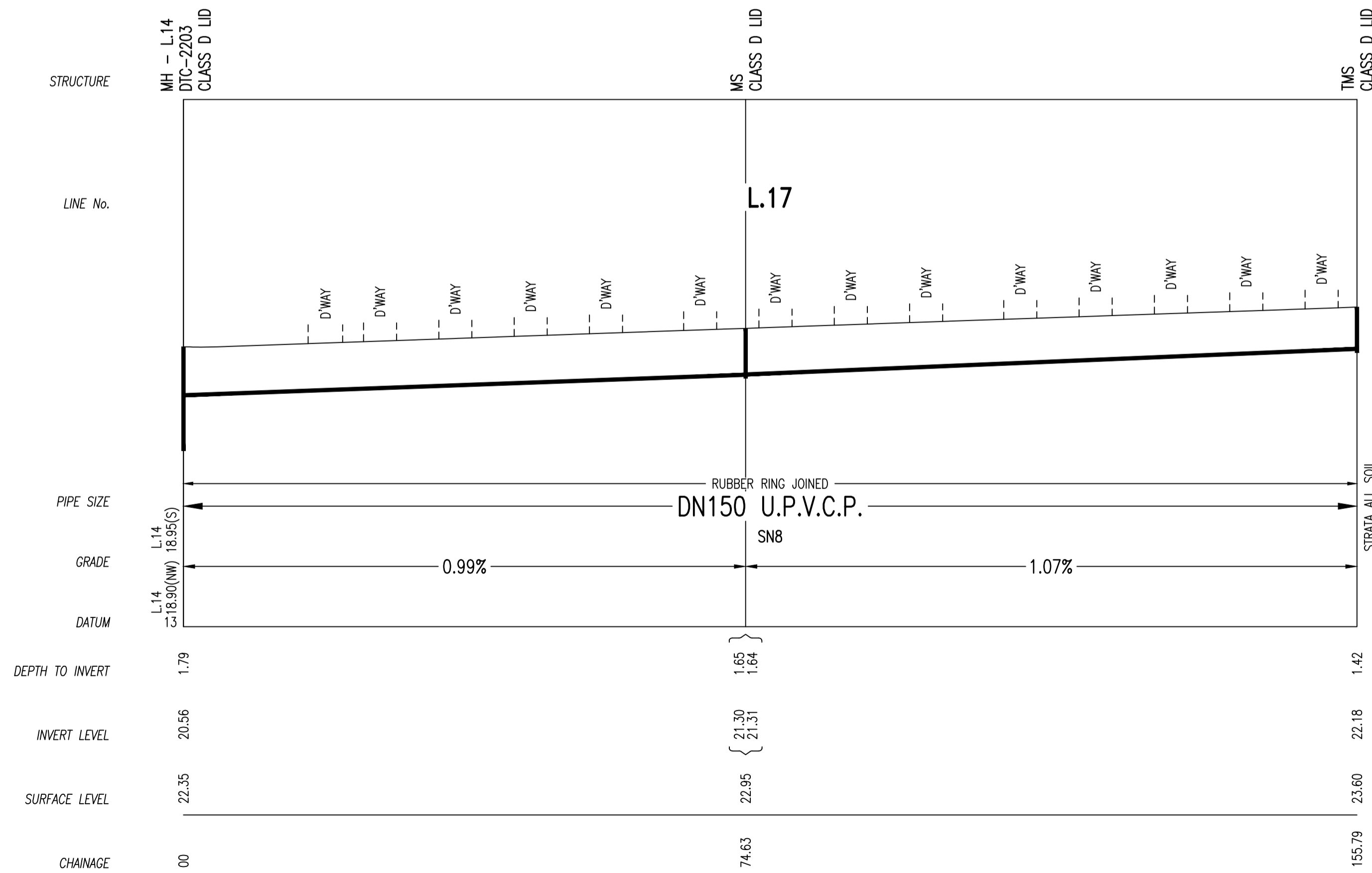
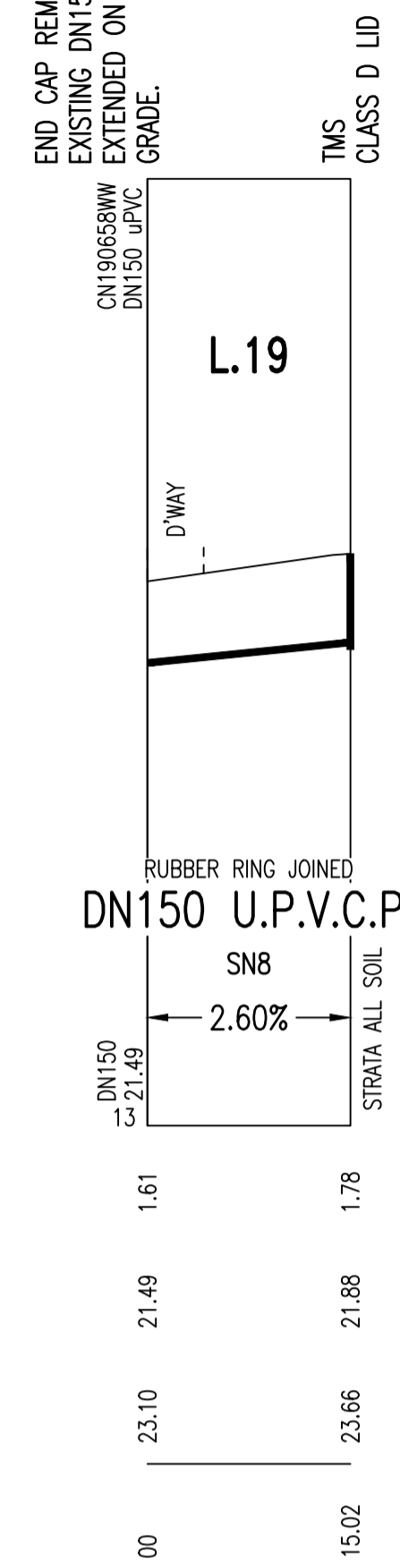
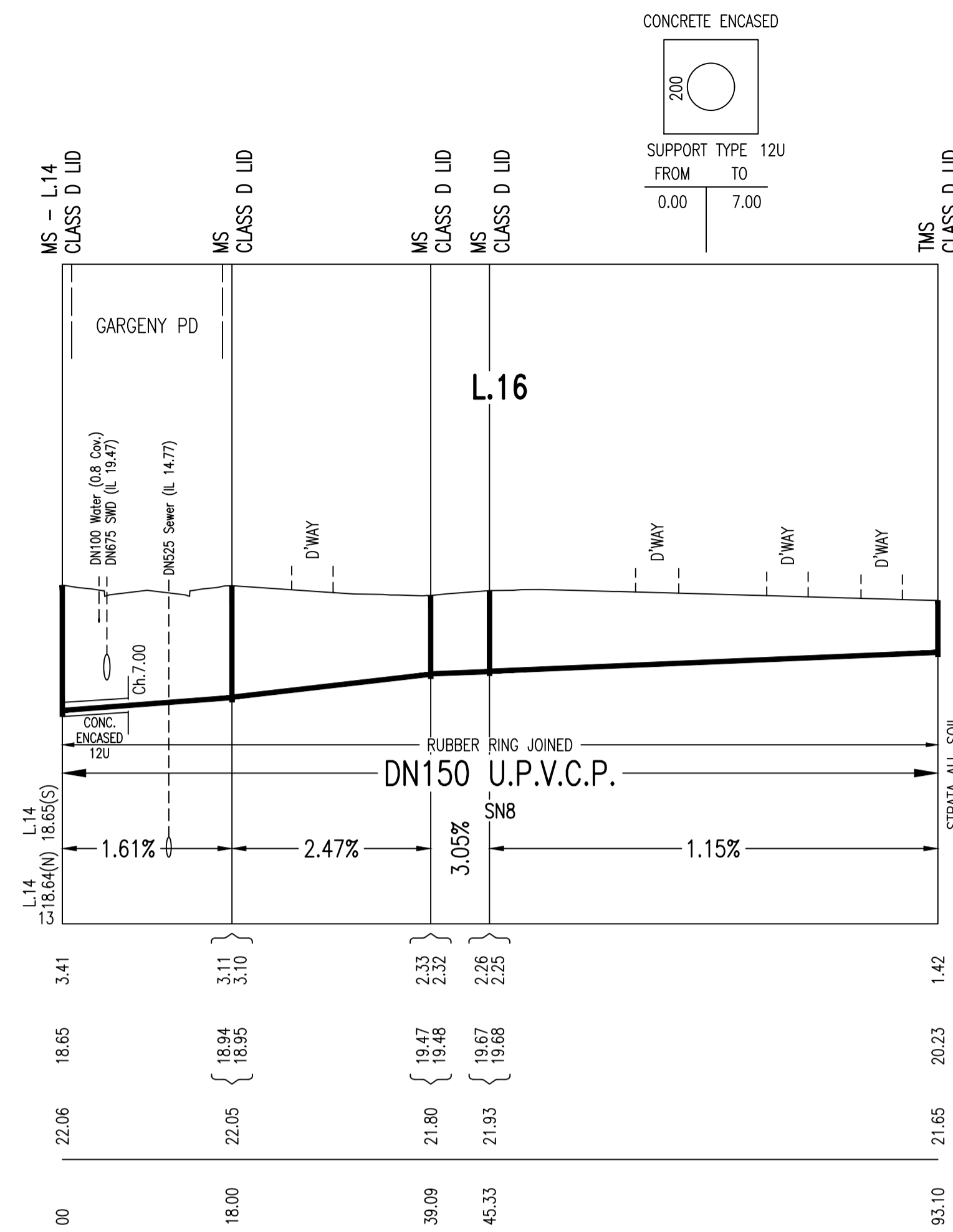
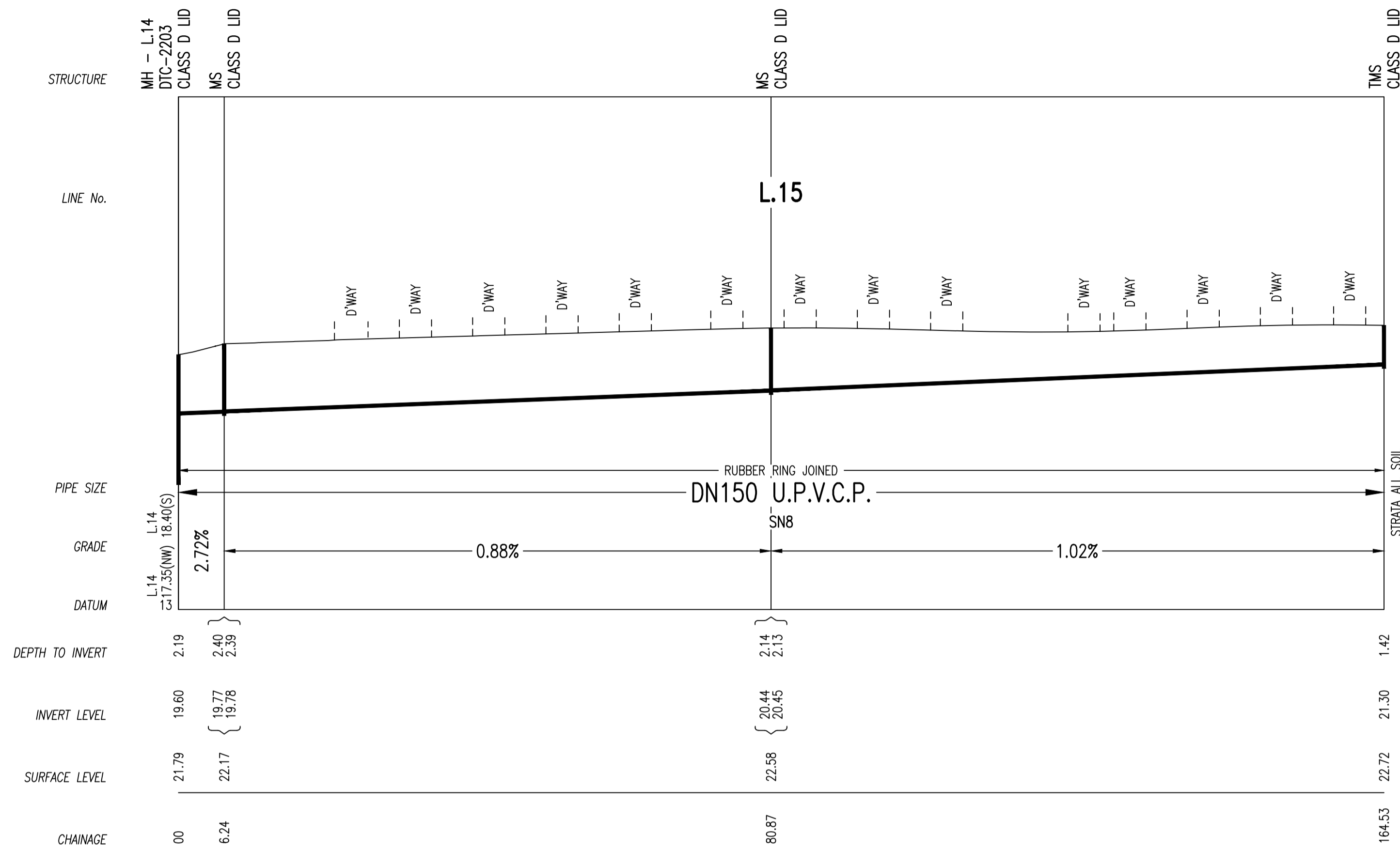
WORK AS CREATED CERTIFICATION		SYDNEY WATER CORPORATION	
DEVELOPER	WOORONG PARK PTY LTD	<b>Sydney WATER</b>	
W.S.C.	QALCHEK PTY LTD		
CONSTRUCTOR	C.J. DOYLE	Case No. 190986WW SHT 5 OF 11 SHTS.	
COMPLETED	09.02.2023		
W.A.C. PREPARED	09.02.2023		
DESIGNER	QALCHEK PTY LTD	SYDNEY WATER CORPORATION	
I CERTIFY THAT THE WORKS HAVE BEEN CREATED IN ACCORDANCE WITH THE WORK AS CREATED DRAWINGS		FOR DETAILS OF SERVICES SEE SHEET 1	



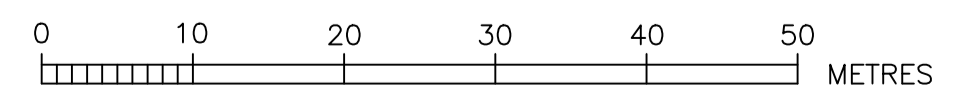
1	WORK AS CREATED	JV	09.02.23
C	EX MH LID LEVEL ADJUSTED	TT	30.08.22
B	TMS ADDED AT END OF L.3	FJ	07.10.21
A	ISSUE FOR APPROVAL	FJ	10.07.21
No.	AMENDMENT DESCRIPTION	BY	DATE

WORK AS CREATED CERTIFICATION		SYDNEY WATER CORPORATION	
DEVELOPER	WOORONG PARK PTY LTD	<b>Sydney WATER</b>	
W.S.C.	QALCHEK PTY LTD		
CONSTRUCTOR	C.J. DOYLE	Case No. 190986WW	SHT 6 OF 11 SHTS.
COMPLETED	09.02.2023	FOR DETAILS OF SERVICES SEE SHEET 1	
W.A.C. PREPARED	09.02.2023		
DESIGNER	QALCHEK PTY LTD	SYDNEY WATER CORPORATION	
I CERTIFY THAT THE WORKS HAVE BEEN CREATED IN ACCORDANCE WITH THE WORK AS CREATED DRAWINGS		FOR DETAILS OF SERVICES SEE SHEET 1	



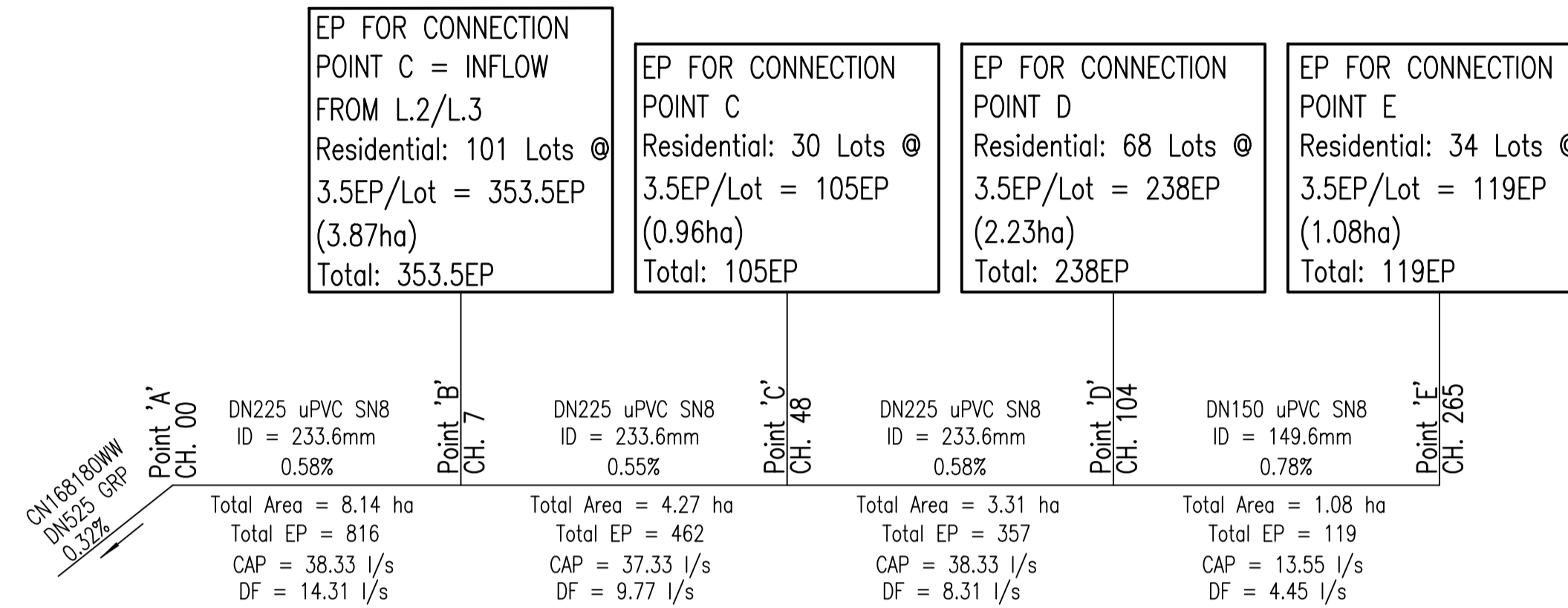
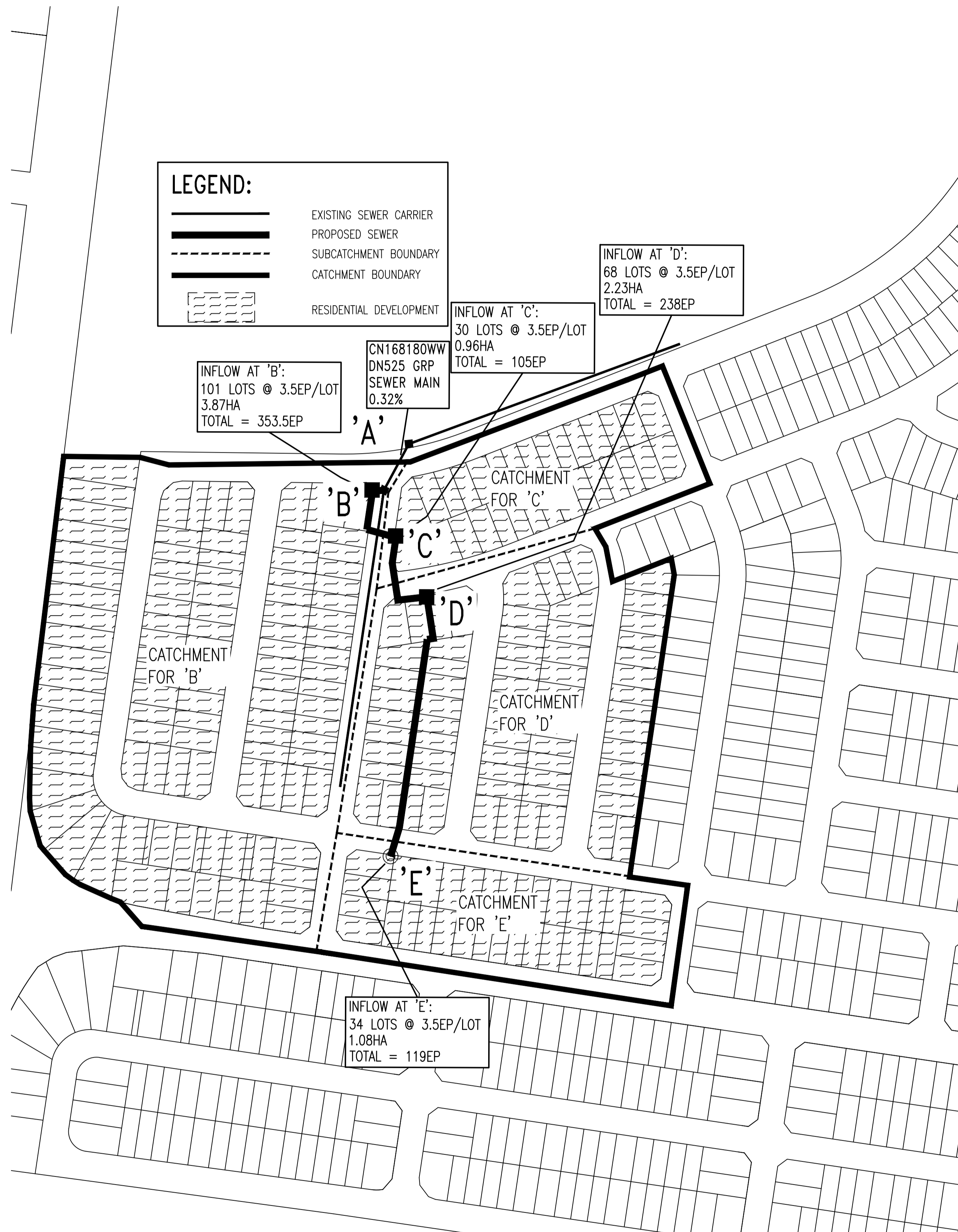


No.	AMENDMENT DESCRIPTION	BY	DATE
1	WORK AS CREATED	JV	09.02.23
C	EX MH LID LEVEL ADJUSTED	TT	30.08.22
B	TMS ADDED AT END OF L.3	FJ	07.10.21
A	ISSUE FOR APPROVAL	FJ	10.07.21



WORK AS CREATED CERTIFICATION		SYDNEY WATER CORPORATION	
DEVELOPER	WOORONG PARK PTY LTD	<b>Sydney WATER</b>	
W.S.C.	QALCHEK PTY LTD	Case No. 190986WW	SHT 8 OF 11 SHTS.
CONSTRUCTOR	C.J. DOYLE		
COMPLETED	09.02.2023		
W.A.C. PREPARED	09.02.2023		
DESIGNER	QALCHEK PTY LTD	SYDNEY WATER CORPORATION	
I CERTIFY THAT THE WORKS HAVE BEEN CONSTRUCTED IN ACCORDANCE WITH THE WORK AS CREATED DRAWINGS		FOR DETAILS OF SERVICES SEE SHEET 1	





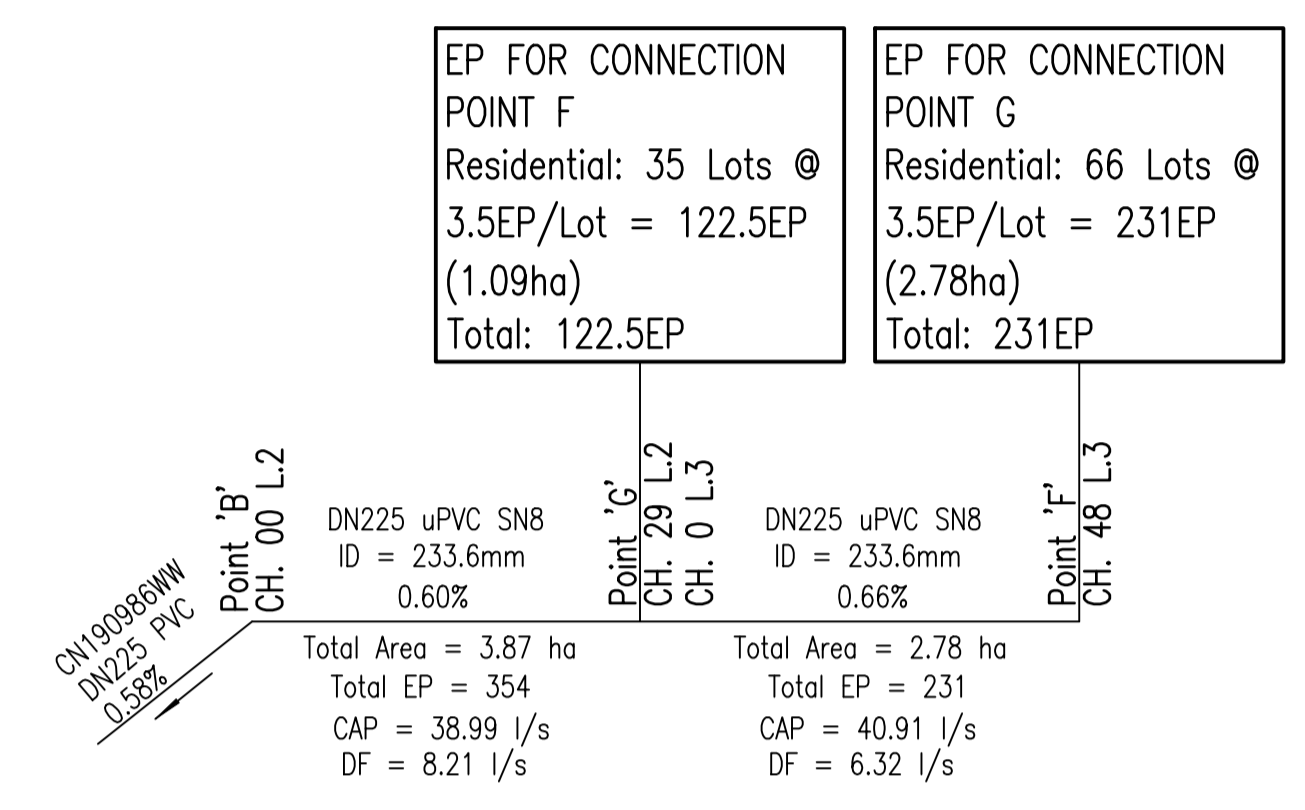
FLOWCHART L.1 'A' TO 'E' 10.07.2021

SUMMARY													
SECTION	CHAINAGE	TOTAL AREA	TOTAL Grav	TOTAL Grav + Pump	PIPE SIZE (DN)	PIPE SIZE (ID)	PIPE GRADE	DESIGN FLOW (DF)	Qf (Capacity)	Actual	SELF CLEANSING	SLIME CONTROL	Capacity
	m	Ha	EP	EP	mm	mm	%	L/s	L/s	PDWF			Deficit
A-B	0 - 7	8.14	816	816	225	233.6	0.58	14.31	38.33	4.77	Self Cleansing OK	NA	OK
B-C	7 - 48	4.27	462	462	225	233.6	0.55	9.77	37.32	3.27	Self Cleansing OK	NA	OK
C-D	48 - 104	3.31	357	357	225	233.6	0.58	8.31	38.33	2.78	Self Cleansing OK	NA	OK
D-E	104 - 265	1.08	119	119	150	149.6	0.78	4.45	13.55	1.49	Self Cleansing OK	NA	OK

FLWSCHEDULE SUMMARY L.1 'A' TO 'E' 10.07.2021

No.	AMENDMENT DESCRIPTION	BY	DATE
1	WORK AS CONSTRUCTED	JV	09.02.23
C	EX MH LID LEVEL ADJUSTED	TT	30.08.22
B	TMS ADDED AT END OF L.3	FJ	07.10.21
A	ISSUE FOR APPROVAL	FJ	10.07.21

WORK AS CONSTRUCTED CERTIFICATION		Sydney WATER SYDNEY WATER CORPORATION	
DEVELOPER	WOORONG PARK PTY LTD	Case No.	190986WW
W.S.C.	QALCHEK PTY LTD	SHT	9 OF 11 SHTS.
CONSTRUCTOR	C.J. DOYLE		
COMPLETED	09.02.2023		
W.A.C. PREPARED	09.02.2023		
DESIGNER	QALCHEK PTY LTD	SYDNEY WATER CORPORATION	
I CERTIFY THAT THE WORKS HAVE BEEN CONSTRUCTED IN ACCORDANCE WITH THE WORK AS CONSTRUCTED DRAWINGS		FOR DETAILS OF SERVICES SEE SHEET 1	



FLOWCHART L.2/L.3 'B' TO 'G' 10.07.2021

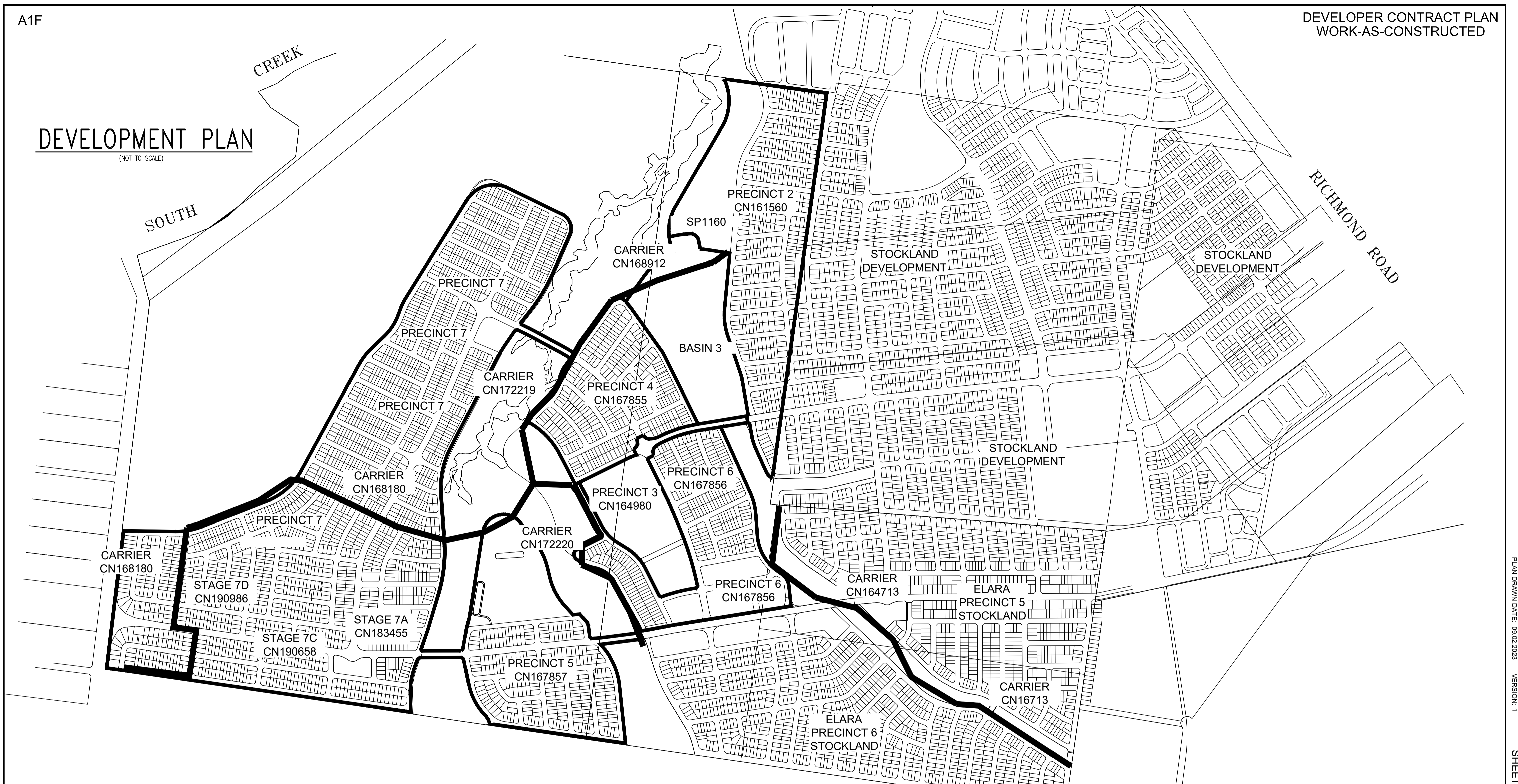
SUMMARY													
SECTION	CHAINAGE	TOTAL AREA	TOTAL Grav	TOTAL Grav + Pump	PIPE SIZE (DN)	PIPE SIZE (ID)	PIPE GRADE	DESIGN FLOW (DF)	Qf (Capacity)	Actual	SELF CLEANSING	SLIME CONTROL	Capacity
	m	Ha	EP	EP	mm	mm	%	L/s	L/s	PDWF			Deficit
B-F	0 - 29 L.2	3.87	354	354	225	233.6	0.6	8.21	38.99	2.74	Self Cleansing OK	NA	OK
F-G	0 - 48 L.3	2.78	231	231	225	233.6	0.66	6.32	40.91	2.11	Self Cleansing OK	NA	OK

FLWSCHEDULE SUMMARY L.2/L.3 'B' TO 'G' 10.07.2021

No.	AMENDMENT DESCRIPTION	BY	DATE
1	WORK AS CONSTRUCTED	JV	09.02.23
C	EX MH LID LEVEL ADJUSTED	TT	30.08.22
B	TMS ADDED AT END OF L.3	FJ	07.10.21
A	ISSUE FOR APPROVAL	FJ	10.07.21

WORK AS CONSTRUCTED CERTIFICATION		SYDNEY WATER CORPORATION	
DEVELOPER	WOORONG PARK PTY LTD	<b>Sydney WATER</b>	Case No. 190986WW SHT 10 OF 11 SHTS.
W.S.C.	QALCHEK PTY LTD		
CONSTRUCTOR	C.J. DOYLE	SYDNEY WATER CORPORATION	
COMPLETED	09.02.2023	FOR DETAILS OF SERVICES SEE SHEET 1	
W.A.C. PREPARED	09.02.2023	I CERTIFY THAT THE WORKS HAVE BEEN CONSTRUCTED IN ACCORDANCE WITH THE WORK AS CONSTRUCTED DRAWINGS	
DESIGNER	QALCHEK PTY LTD		

**DEVELOPMENT PLAN**  
(NOT TO SCALE)



PRECINCT	CASE NUMBER	DEPENDENCY	COMMENTS/STATUS
Winten Precinct 3	164980	167855, 168912, 172219, 172220	Completed, connected
Winten Precinct 4	167855	168912, 172219, 172220	Completed, connected
Winten Precinct 5	180446	168912, 172219, 172221	Completed, Connected
Winten Precinct 6	167856	164980, 167855, 168912, 172219, 172220, 164713	Completed, connected
Winten Precinct 7A	183455	168912, 172219, 172220	Under Construction
Winten Precinct 7C	190658	168912, 172219, 172220, 168180, 183455	Designed and approved
Winten Precinct 7D	190986	168912, 172219, 172220, 168180, 183455, 190658	Designed under this CN
Winten Carrier Phase 1	168912	N/A	Completed, connected
Winten Carrier Phase 2	172219	168912	Completed, connected
Winten Carrier Phase 3	172220	168912, 172219	Completed, connected
Winten Carrier Stage 2	168180	168912, 172219, 172220	Under Construction

1	WORK AS CONSTRUCTED	JV	09.02.23
C	EX MH LID LEVEL ADJUSTED	TT	30.08.22
B	TMS ADDED AT END OF L3	FJ	07.10.21
A	ISSUE FOR APPROVAL	FJ	10.07.21
No.	AMENDMENT DESCRIPTION	BY	DATE

WORK AS CONSTRUCTED CERTIFICATION		SYDNEY WATER CORPORATION	
DEVELOPER	WOODRONG PARK PTY LTD	<b>Sydney WATER</b>	Case No. 190986WW SHT 11 OF 11 SHTS.
W.S.C.	QALCHEK PTY LTD		
CONSTRUCTOR	C.J. DOYLE	FOR DETAILS OF SERVICES SEE SHEET 1	
COMPLETED	09.02.2023		
W.A.C. PREPARED	09.02.2023		
DESIGNER	QALCHEK PTY LTD	SYDNEY WATER CORPORATION	
I CERTIFY THAT THE WORKS HAVE BEEN CONSTRUCTED IN ACCORDANCE WITH THE WORK AS CONSTRUCTED DRAWINGS		FOR DETAILS OF SERVICES SEE SHEET 1	