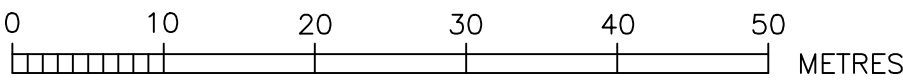


LOCALITY PLAN & BENCHMARK DIAGRAM

(NOT TO SCALE)

DEVELOPER CONTRACT PLAN
WORK-AS-CONSTRUCTED



M.G.A. ZONE 56 M.G.A. DATUM: GDA94

- DESIGNER AND WATER SERVICING COORDINATOR:
QALCHEK PTY LTD (CERTIFIED No.289)
UNIT 2, 15-17 DAVID RD EMU PLAINS NSW 2750
PH. No. (02) 4722 8181
FOR:
WOORONG PARK PTY LTD
c/o J WYNDHAM PRINCE
580 HIGH STREET, PENRITH, NSW 2750
PH. 02 4720 3300
- THE WORKS AND MATERIALS ARE IN ACCORDANCE WITH THE SEWERAGE CODE OF AUSTRALIA WSA 02-2002-2.2 SYDNEY WATER EDITION VERSION 4 (2017) INCLUDING THE SYDNEY WATER SUPPLEMENT & APPENDICES.
- ALL STRUCTURES ARE CONSTRUCTED TO FINISHED SURFACE LEVELS.
ALL LEVELS REFER TO FINISHED SURFACE LEVEL.
- ALL BUILDING LAYOUTS, FINISHED SURFACE LEVELS, STORMWATER INFORMATION, AND GENERAL CIVIL ENGINEERING DETAILS TAKEN FROM:
CIVIL BASEPLAN: PRECINCT 5 BASE INFORMATION.DWG (PROVIDED BY JWP 13.09.19)
SURFACE INFORMATION: 998511 P5 SUBDIVISION & RAINGARDEN 3D TRIANGLES.DWG (PROVIDED BY JWP 10.10.2019)
SWD INFORMATION SUBDIVISION: 998511CC DRAINAGE - PCT 5 FOR ISSUE.DWG & 99851CC PRECINCT 5 SUBDIVISION FULL SET.PDF (PROVIDED BY JWP 27.09.19)
SWD INFORMATION FOR RAINGARDEN: NEWPARK P5 R6 DRAINAGE LONGSECTIONS.PDF (PROVIDED BY JWP 10.10.2019)
- THE NUMBER OF FIELD COMPACTION TESTS CONDUCTED TO SATISFY THE SEWERAGE CODE OF AUSTRALIA ARE:
PIPE EMBEDMENT ZONE: 0 TESTS CONDUCTED (LETTER PROVIDED)
TRENCH FILL ZONE (NON TRAFFICABLE): 106 TESTS CONDUCTED
TRENCH FILL ZONE (TRAFFICABLE): 0 TESTS CONDUCTED
TRENCH FILL ZONE (MAINTENANCE STRUCTURES): 211 TESTS CONDUCTED
TRENCH FILL ZONE - TOTAL: 317 TESTS CONDUCTED
- BUILDING OVER/ADJACENT TO SEWER - CONDITIONS MAY APPLY. REFER TO QALCHEK FOR DETAILS.
- ALL EXCAVATION, SHORING EXCAVATION AND STABILITY OF ADJACENT STRUCTURES/SERVICES/DWELLINGS WAS THE RESPONSIBILITY OF THE CONSTRUCTOR.
ALL PCS CONNECTIONS TO I.S. ARE AT 0.7m & 45° TO MAIN UNLESS OTHERWISE INDICATED.
DENOTES STANDARD PCS CONNECTION (REFER DTC-2120 ISSUE A DATE 18.03.15)
DENOTES NON-STANDARD PCS CONNECTION AS PER SHEET 10
- THE WORKS ARE CONSTRUCTED IN ACCORDANCE WITH SYDNEY WATER'S DEEMED TO COMPLY DRAWINGS:
FOR ALL MH'S
DTC-2000 (ISSUE C 18.03.15),
DTC-2200 (ISSUE F 18.03.15),
DTC-2203 (ISSUE B 18.03.15),
DTC-2220 (ISSUE D 18.03.15),
DTC-2221 (ISSUE B 01.03.13),
DTC-2222 (ISSUE C 18.03.15)
- PIPES CONCRETE ENCASED SHOWN ACCORDINGLY:- REFER TO SEW-1205-V
- W.A.C. PREPARED FROM INFORMATION SUPPLIED (IN PART BY QALCHEK PTY LTD) & BY DARACON.

1	WORK AS CONSTRUCTED	J.V.	11.08.20
F	BOY CHANGES LOTS 5128-5131, L20 AMENDED	F.J.	04.03.20
E	CATCHMENT PLAN ADDED ON SHEET 12	F.J.	14.01.20
D	DETAIL SHEET 10 AMENDED (SWC REQUEST)	F.J.	12.12.19
C	ISSUE FOR APPROVAL	F.J.	19.10.19
B	SMALL LAYOUT CHANGE L3, L4	F.J.	27.09.19
A	LAYOUT FOR REVIEW	F.J.	07.08.19
No.	AMENDMENT DESCRIPTION	BY	DATE

PLAN TO BE READ IN CONJUNCTION
WITH CURRENT SYDNEY WATER STANDARDS
SYDNEY WATER CORPORATION

PRIOR TO COMMENCEMENT OF EXCAVATION FOR
PROPOSED AND EXISTING SERVICES CONTACT :-

DIAL BEFORE YOU DIG Ph. 1100
ELECTRICITY Ph.
GAS Ph.
TELECOMMUNICATIONS Ph.
SYDNEY WATER Ph. 132 092
GIVING AT LEAST 48 HOURS NOTICE.

UTILITIES					
TYPE	DATE	REF.	TYPE	DATE	REF.
STORMWATER: SWD --- SWD	27.09.19	ENG. DES.			
WATER: DN100 Water ---	19.10.19	DESIGN			

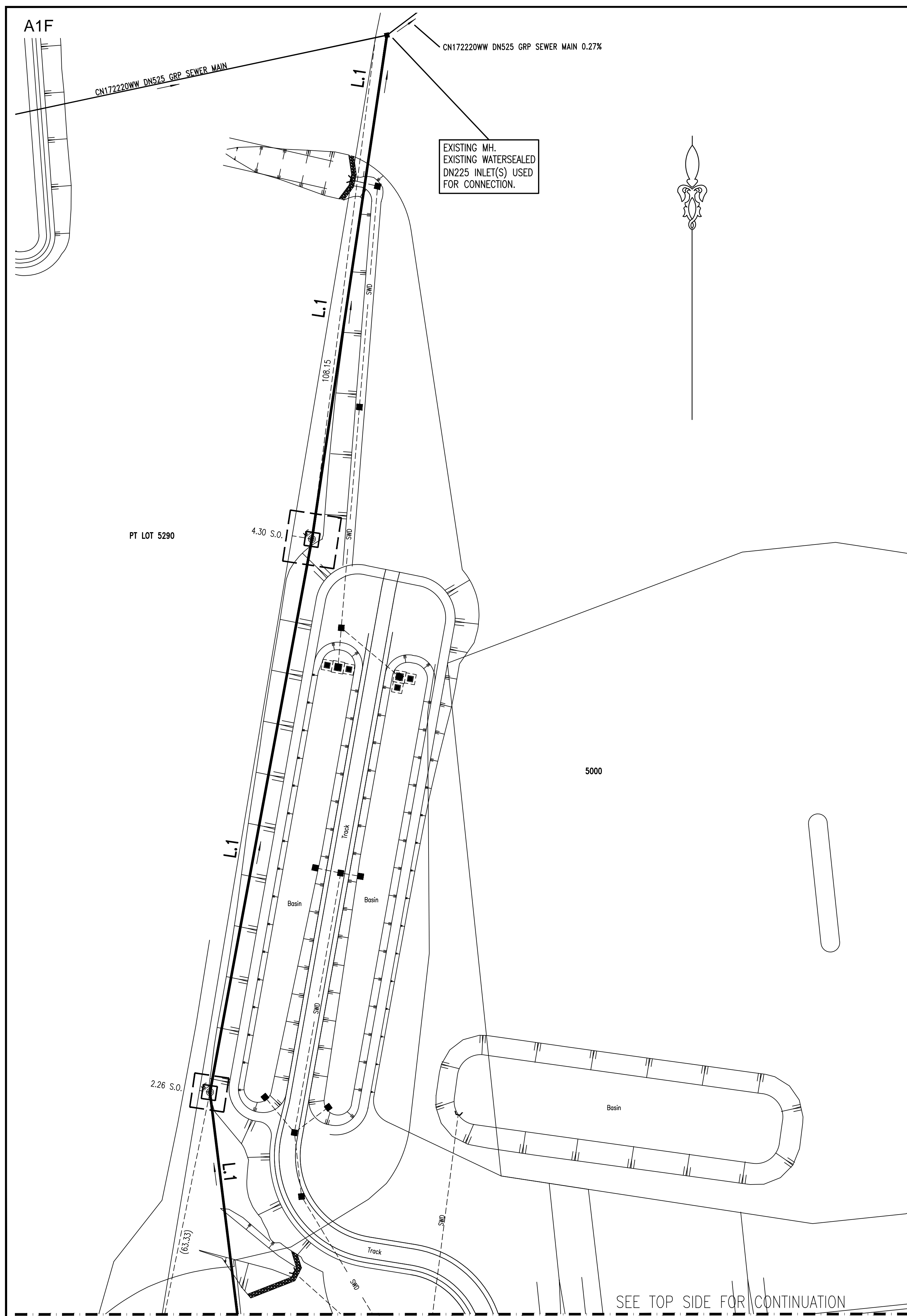
WORK AS CONSTRUCTED CERTIFICATION			
DEVELOPER	WOORONG PARK PTY LTD		
WATER SERVICE CO-ORDINATOR	QALCHEK PTY LTD		
CONSTRUCTOR	C.J. DOYLE CONTRACTING		
COMPLETED	10.08.2020	W.A.C. PREPARED	11.08.2020
DESIGNER	QALCHEK PTY LTD		
I CERTIFY THAT THE WORKS HAVE BEEN CONSTRUCTED IN ACCORDANCE WITH THE WORK AS CONSTRUCTED DRAWINGS.			

PIPE SCHEDULE					
SIZE DN	TYPE	CLASS	LENGTH	PIPE JOINING METHOD / NOTES	
DN225	PP	SN10	127.43	RRJ	
DN225	UPVC	SN8	655.53	RRJ	
DN150	UPVC	SN8	2509.01	RRJ	
DN100	UPVC	SN10	346.00	SWJ (NOTE 8)	
DESIGN HEAD . . . m			NO BOUNDARY TRAPS REQUIRED.		

AUSTRALIAN HEIGHT DATUM	
SCALES	
PLAN . 1:500 .	SECTION { HOR. . 1:500 . VERT. . 1:125 .
CROSS SECTIONS NATURAL	
LENGTHS, DEPTHS & LEVELS ARE IN METRES.	

NO AMENDMENTS ARE TO BE MADE TO THIS PLAN WITHOUT REFERENCE TO SYDNEY WATER. THIS PLAN IS NOT NECESSARILY UP TO DATE OR CORRECT AND SYDNEY WATER ACCEPTS NO RESPONSIBILITY.	
U.B. DIRECTORY	MAP 126/B13 SYDNEY 45th Edition
SHEET . 1 . OF . 12 .	File No. N/A

Sydney WATER SYDNEY WATER CORPORATION	
Case No.180446WW	
BLACKTOWN SEWERAGE DRAINS TO RICHMOND RD. CARRIER VIA SP1160 RIVERSTONE S.T. 0042	



EASEMENT FOR DRAINAGE 1.5 WIDE

DRIVEWAY

PCS AS PER DETAIL ON SHEET 10

MOUND EXTENT

SEE BOTTOM SHEET 3 FOR CONTINUATION

WORK AS CONSTRUCTED CERTIFICATION

DEVELOPER

WOORONG PARK PTY LTD

W.S.C.

QALCHEK PTY LTD

CONSTRUCTOR

C.J. DOYLE CONTRACTING

COMPLETED

10.08.2020

W.A.C. PREPARED

11.08.2020

DESIGNER

QALCHEK PTY LTD

1

CERTIFY THAT THE WORKS HAVE BEEN CONSTRUCTED IN ACCORDANCE WITH THE WORK AS CONSTRUCTED DRAWINGS

Sydney WATER

SYDNEY WATER CORPORATION

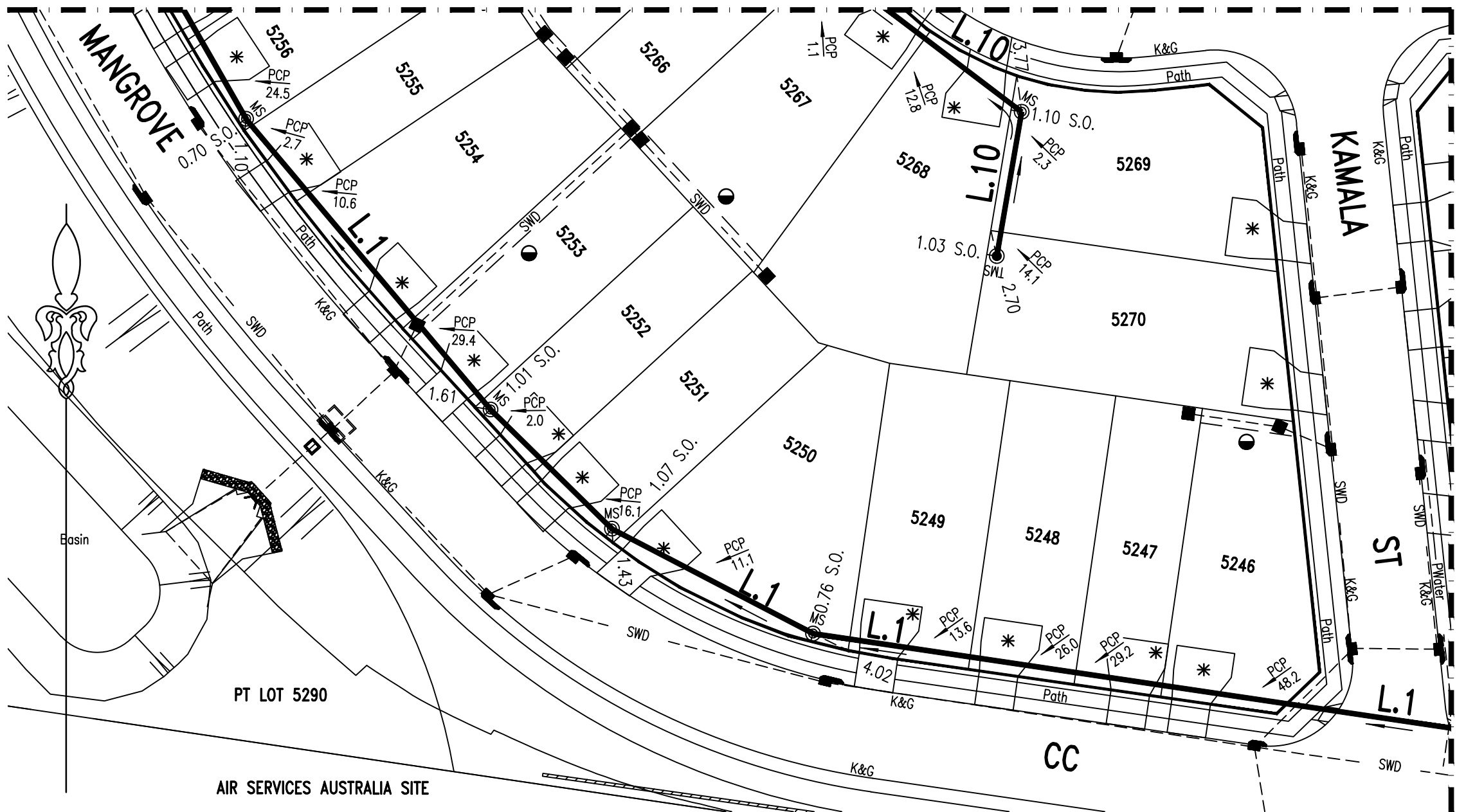
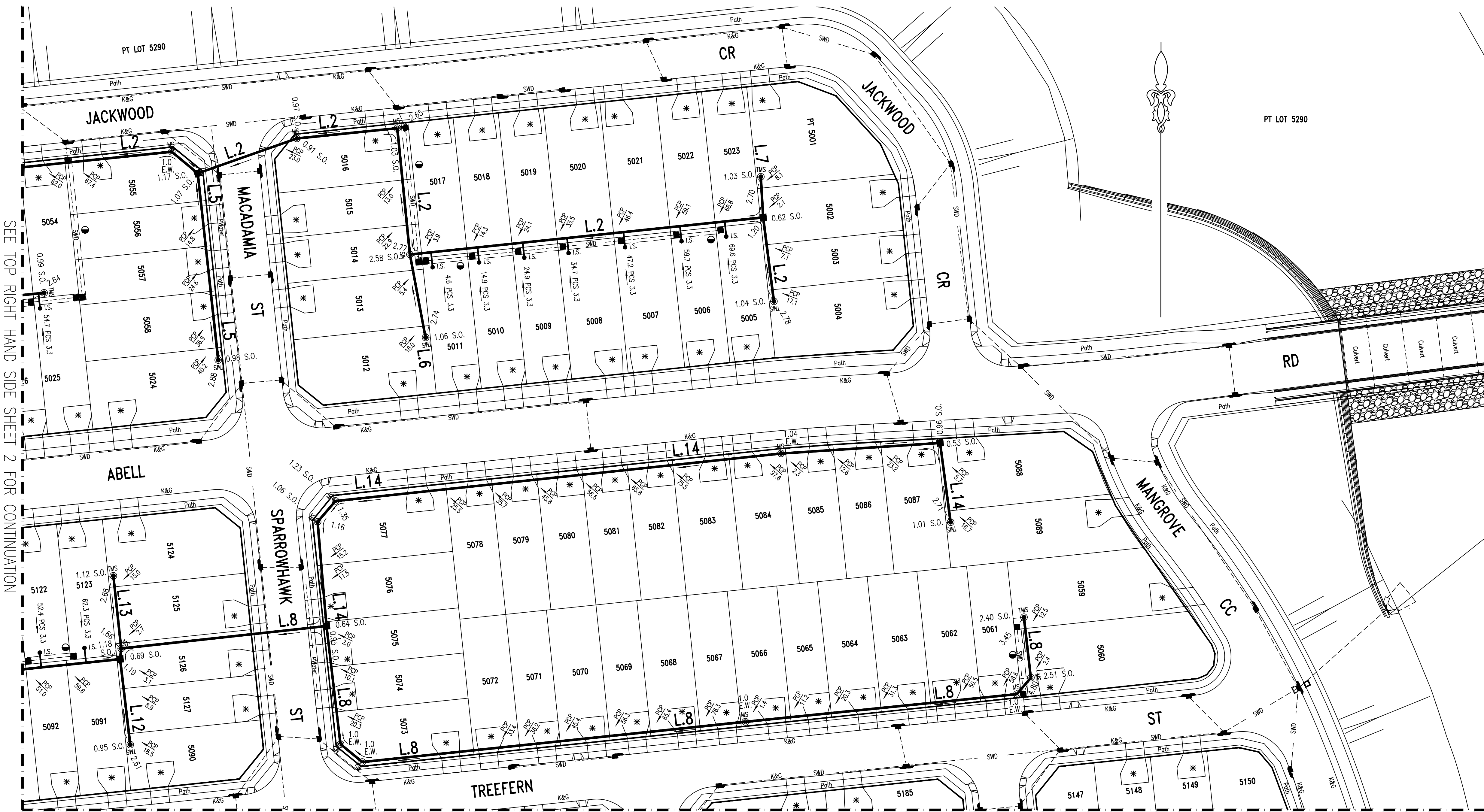
Case No. 180446WW

SHT 2 OF 12 SHTS.

SYDNEY WATER CORPORATION

FOR DETAILS OF SERVICES SEE SHEET 1

1	WORK AS CONSTRUCTED	J.V.	11.08.20	B	SMALL LAYOUT CHANGE L3, L4	F.J.	27.09.19
F	BDY CHANGES LOTS 5128-5131, L20 AMENDED	F.J.	04.03.20	A	LAYOUT FOR REVIEW	F.J.	07.08.19
No.	AMENDMENT DESCRIPTION	BY	DATE	No.	AMENDMENT DESCRIPTION	BY	DATE



1	WORK AS CONSTRUCTED	J.V.	11.08.20
F	BDY CHANGES LOTS 5128-5131, L.20 AMENDED	F.J.	04.03.20
E	CATCHMENT PLAN ADDED ON SHEET 12	F.J.	14.01.20
D	DETAIL SHEET 10 AMENDED (SWC REQUEST)	F.J.	12.12.19
C	ISSUE FOR APPROVAL	F.J.	19.10.19
B	SMALL LAYOUT CHANGE L.3, L.4	F.J.	27.09.19
A	LAYOUT FOR REVIEW	F.J.	07.08.19
No.	AMENDMENT DESCRIPTION	BY	DATE

WORK AS CONSTRUCTED CERTIFICATION		SYDNEY WATER CORPORATION	
DEVELOPER	WOORONG PARK PTY LTD	Sydney WATER	
W.S.C.	QALCHEK PTY LTD		
CONSTRUCTOR	C.J. DOYLE CONTRACTING	Case No. 180446WW	SHT 3 OF 12 SHTS.
COMPLETED	10.08.2020		
W.A.C. PREPARED	11.08.2020		
DESIGNER	QALCHEK PTY LTD	SYDNEY WATER CORPORATION	
I CERTIFY THAT THE WORKS HAVE BEEN CONSTRUCTED IN ACCORDANCE WITH THE WORK AS CONSTRUCTED DRAWINGS		FOR DETAILS OF SERVICES SEE SHEET 1	

SEE SHEET 3 TOP FOR CONTINUATION



SEE SHEET 2 LEFT FOR CONTINUATION

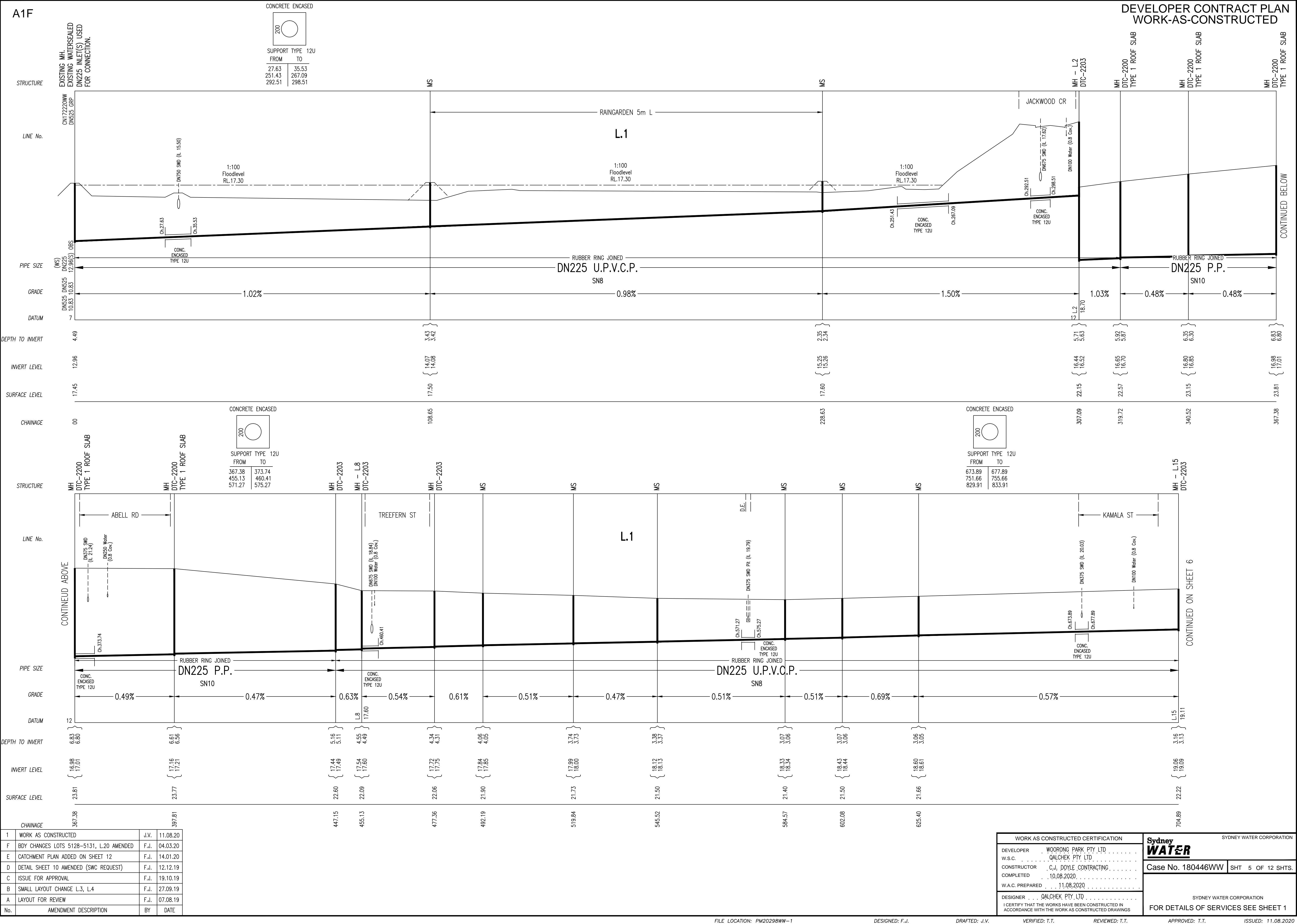
SEE SHEET 3 LEFT BOTTOM CONTINUATION

AIR SERVICES AUSTRALIA SITE

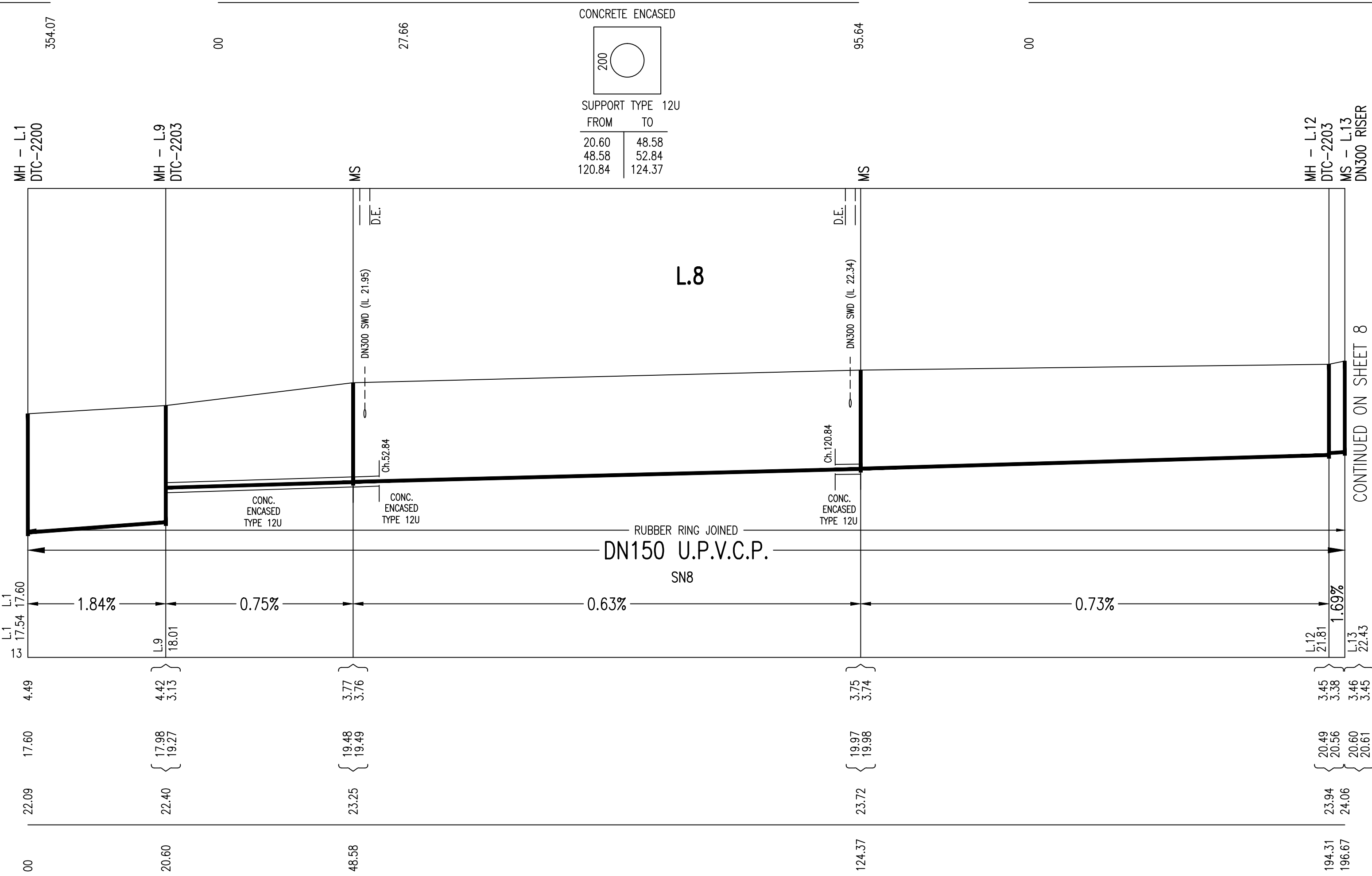
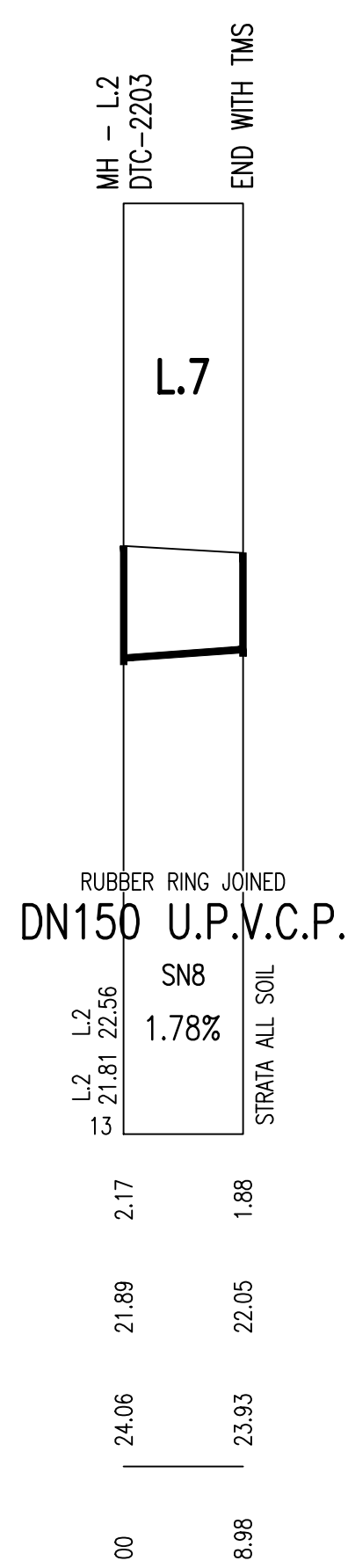
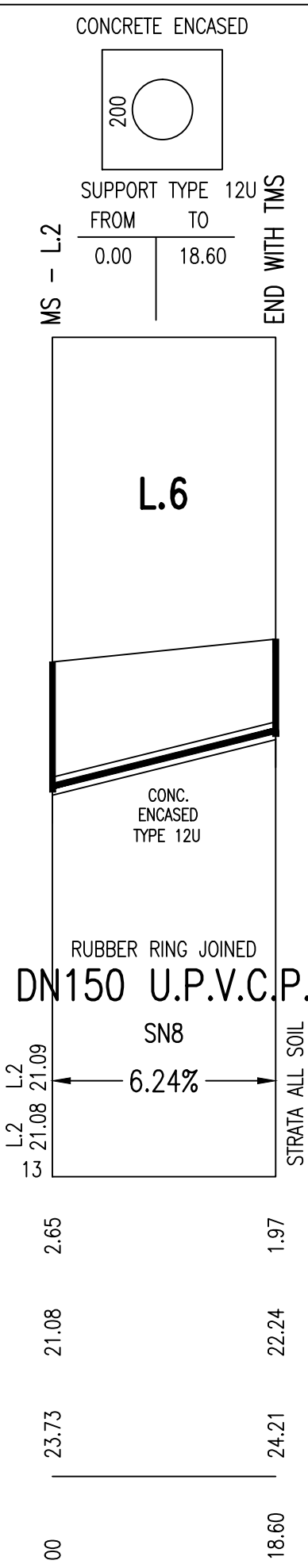
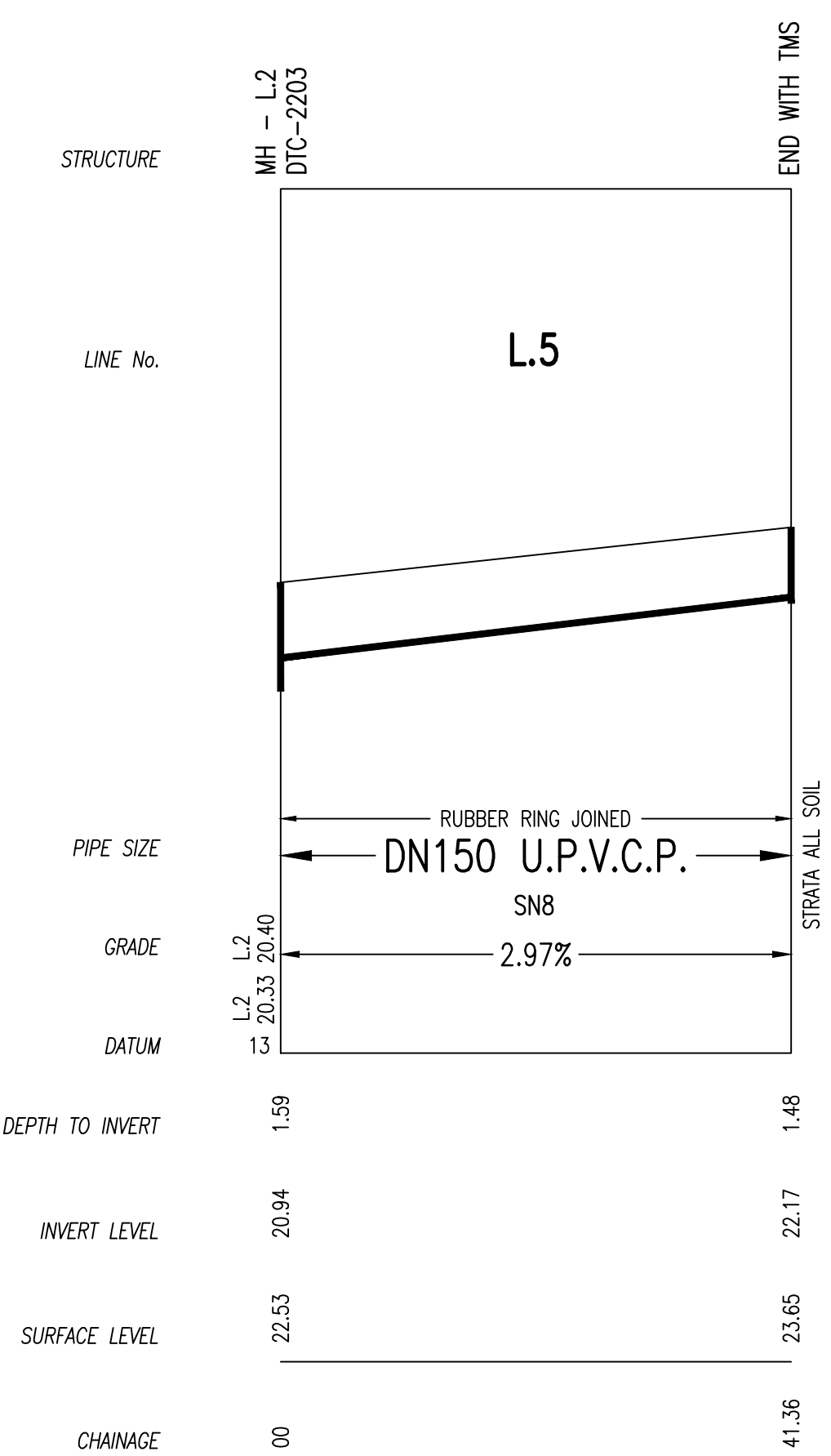
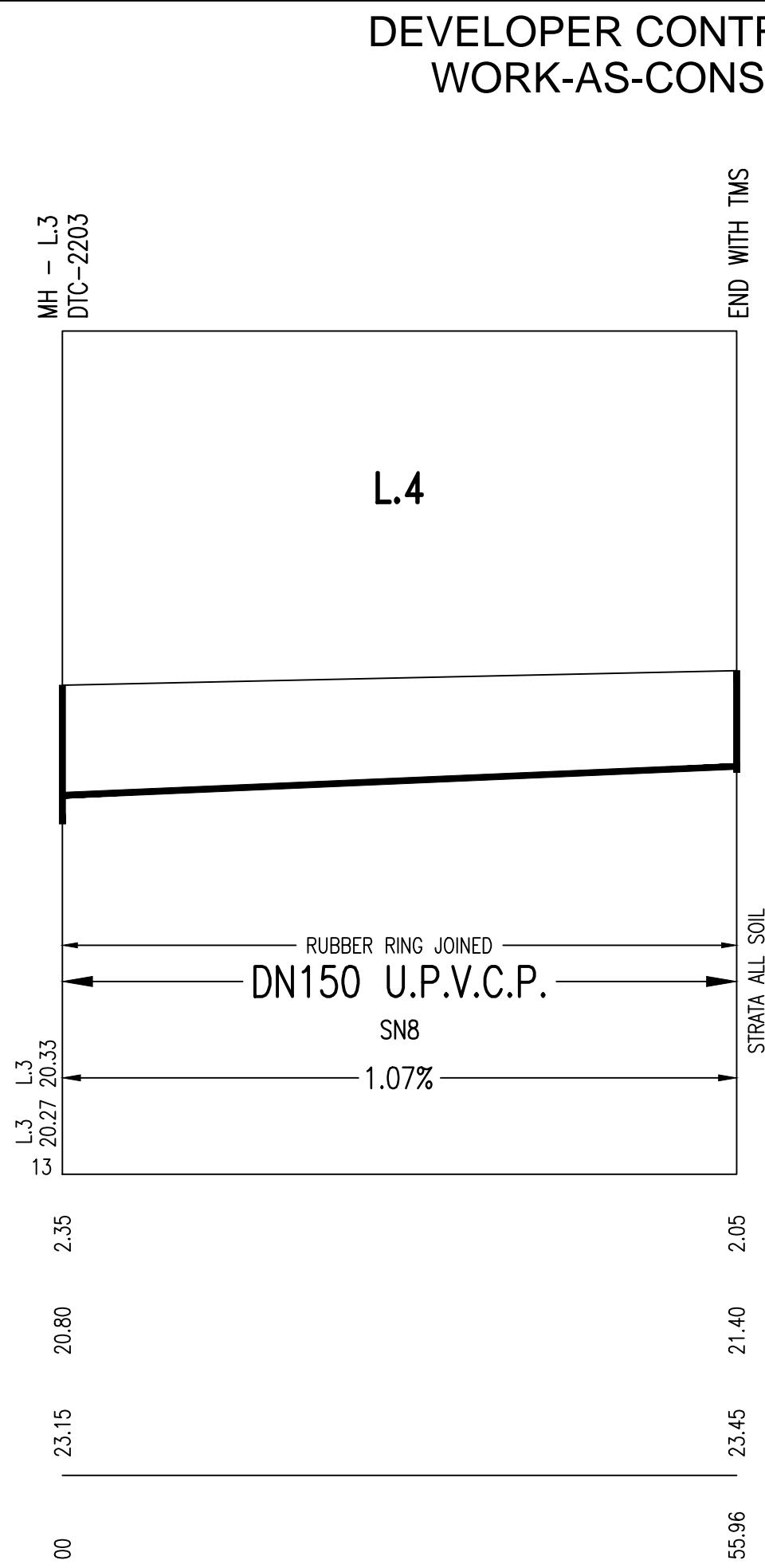
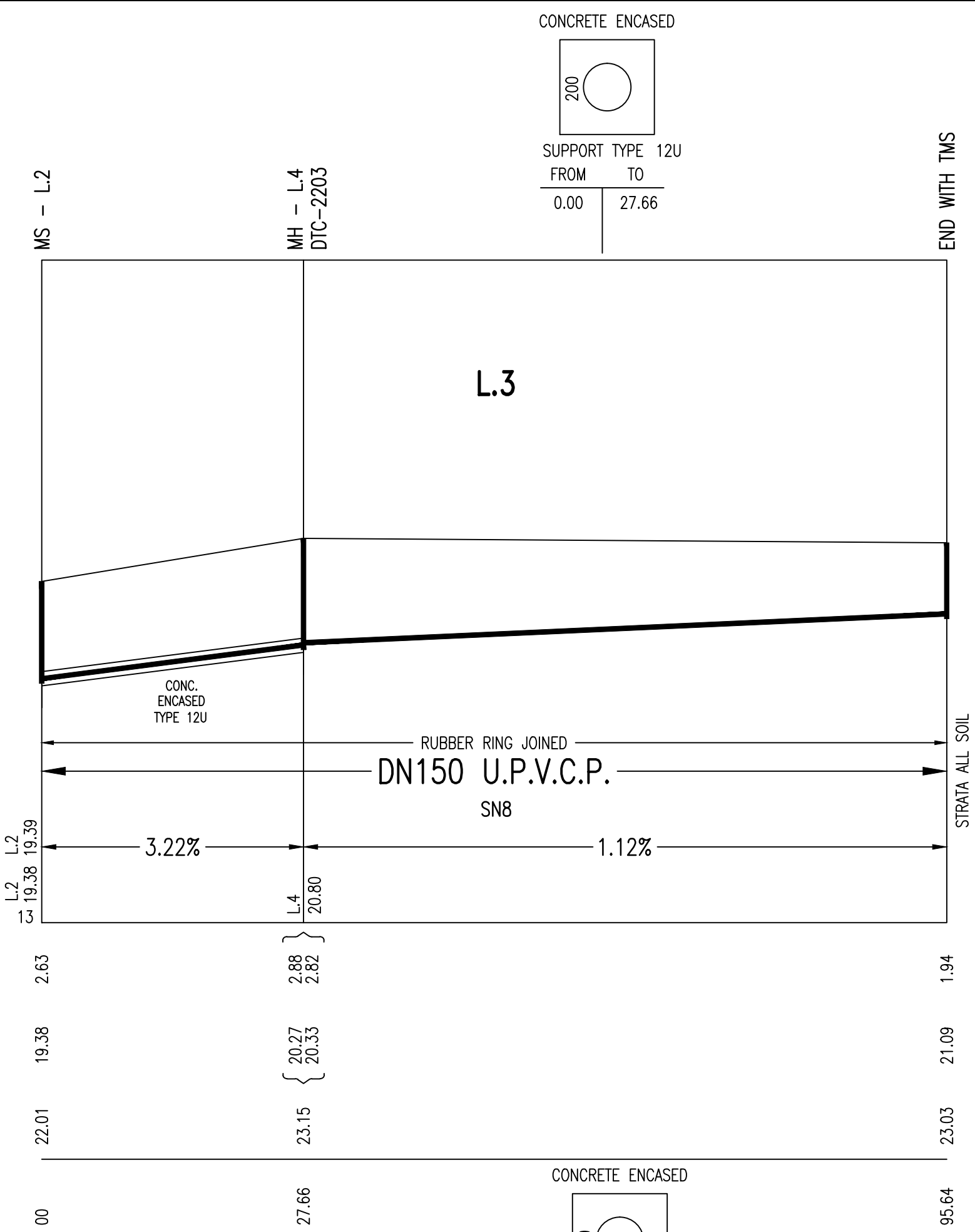
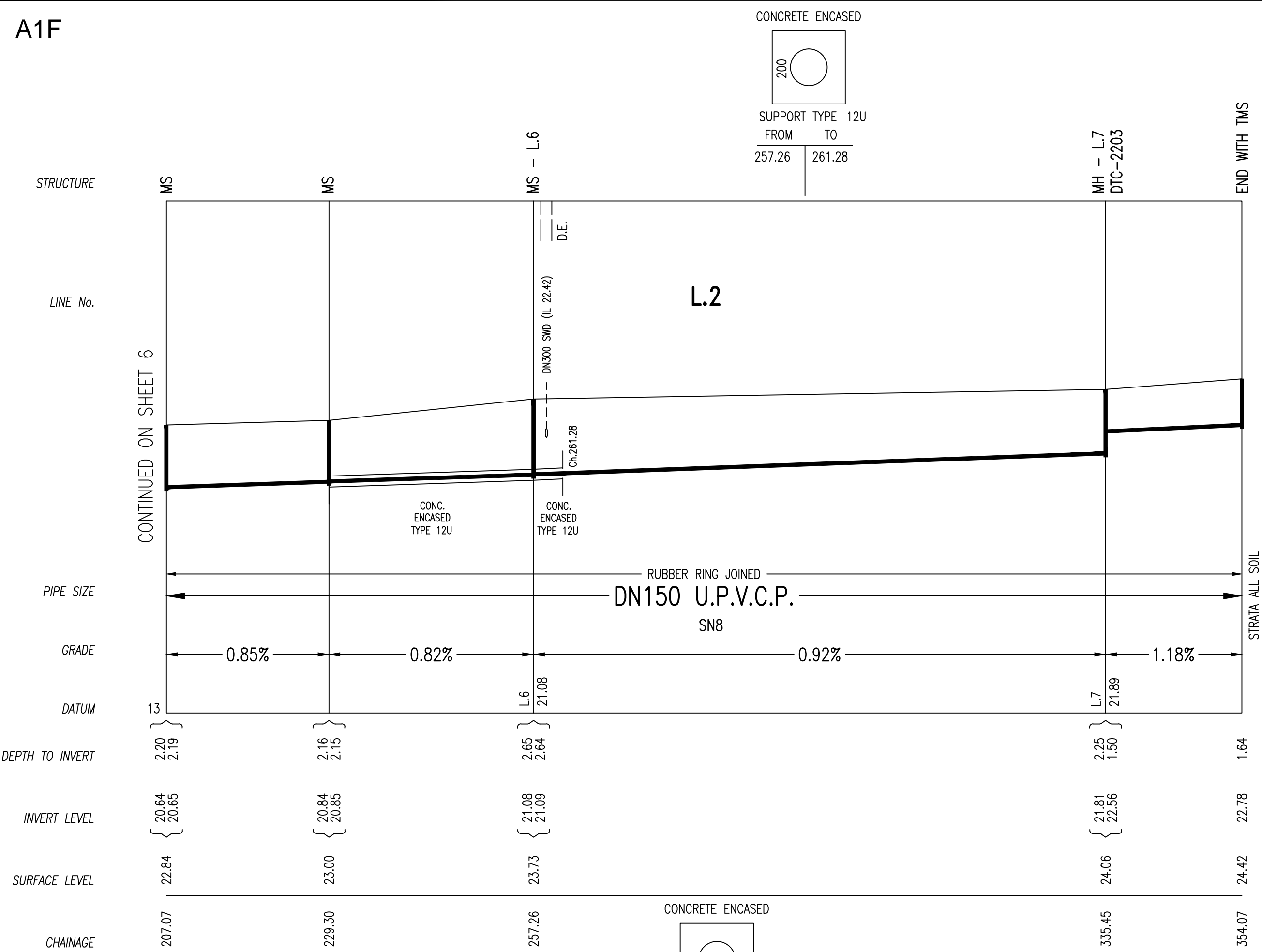
1	WORK AS CONSTRUCTED	J.V.	11.08.20
F	BDY CHANGES LOTS 5128-5131, L.20 AMENDED	F.J.	04.03.20
E	CATCHMENT PLAN ADDED ON SHEET 12	F.J.	14.01.20
D	DETAIL SHEET 10 AMENDED (SWC REQUEST)	F.J.	12.12.19
C	ISSUE FOR APPROVAL	F.J.	19.10.19
B	SMALL LAYOUT CHANGE L.3, L.4	F.J.	27.09.19
A	LAYOUT FOR REVIEW	F.J.	07.08.19
No.	AMENDMENT DESCRIPTION	BY	DATE

- EASEMENT FOR DRAINAGE 1.5 WIDE
- DRIVEWAY
- PCS AS PER DETAIL ON SHEET 10
- MOUND EXTENT


WORK AS CONSTRUCTED CERTIFICATION		Sydney WATER	
DEVELOPER	WOORONG PARK PTY LTD	SYDNEY WATER CORPORATION	
W.S.C.	QALCHEK PTY LTD		
CONSTRUCTOR	C.J. DOYLE CONTRACTING		
COMPLETED	10.08.2020		
W.A.C. PREPARED	11.08.2020		
DESIGNER	QALCHEK PTY LTD		
I CERTIFY THAT THE WORKS HAVE BEEN CONSTRUCTED IN ACCORDANCE WITH THE WORK AS CONSTRUCTED DRAWINGS			
		FOR DETAILS OF SERVICES SEE SHEET 1	



[illegible]



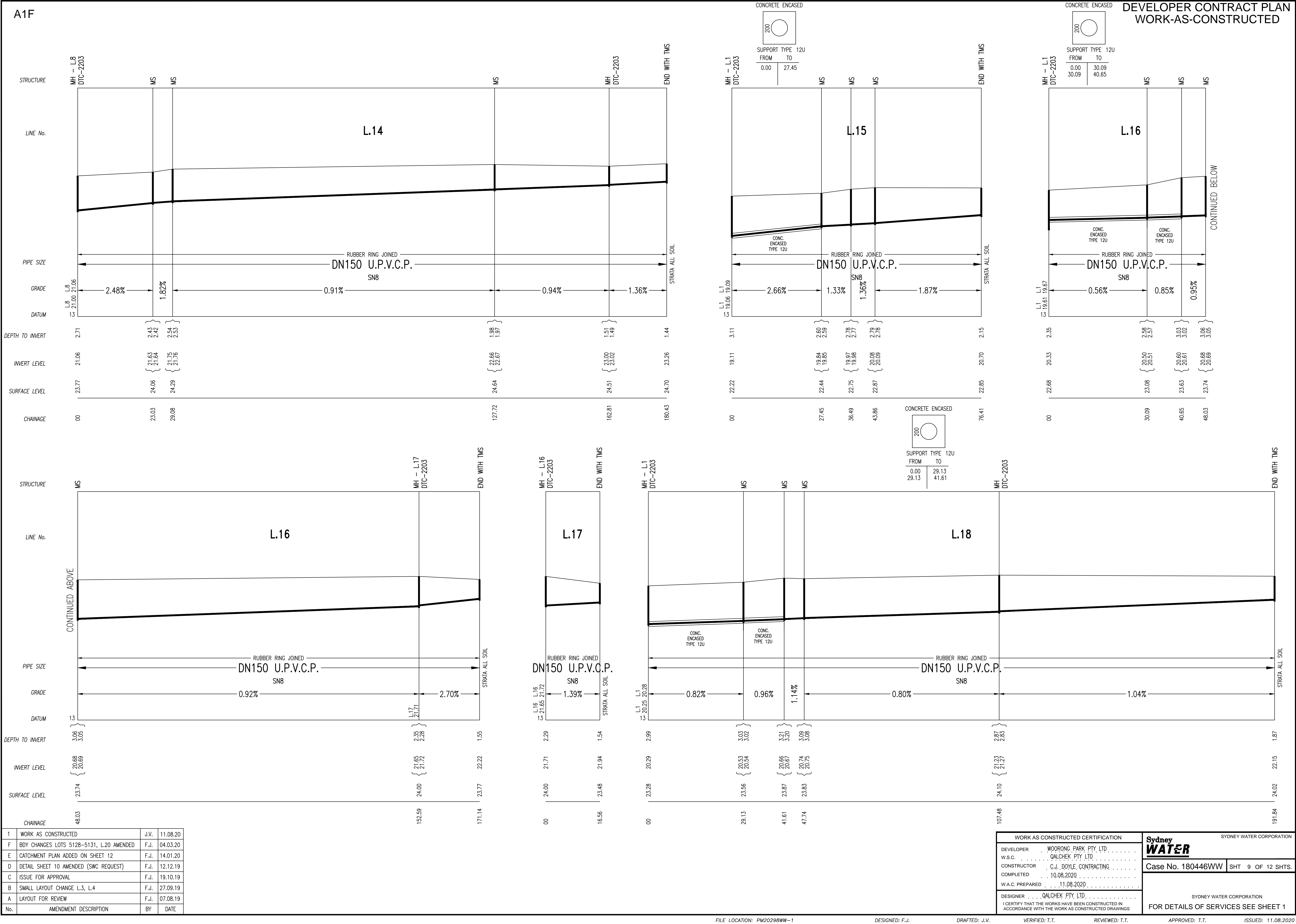
I	WORK AS CONSTRUCTED	J.V.	11.08.20
F	BOY CHANGES LOTS 5128-5131, L20 AMENDED	F.J.	04.03.20
E	CATCHMENT PLAN ADDED ON SHEET 12	F.J.	14.01.20
D	DETAIL SHEET 10 AMENDED (SWC REQUEST)	F.J.	12.12.19
C	ISSUE FOR APPROVAL	F.J.	19.10.19
B	SMALL LAYOUT CHANGE L3, L4	F.J.	27.09.19
A	LAYOUT FOR REVIEW	F.J.	07.08.19
No.	AMENDMENT DESCRIPTION	BY	DATE

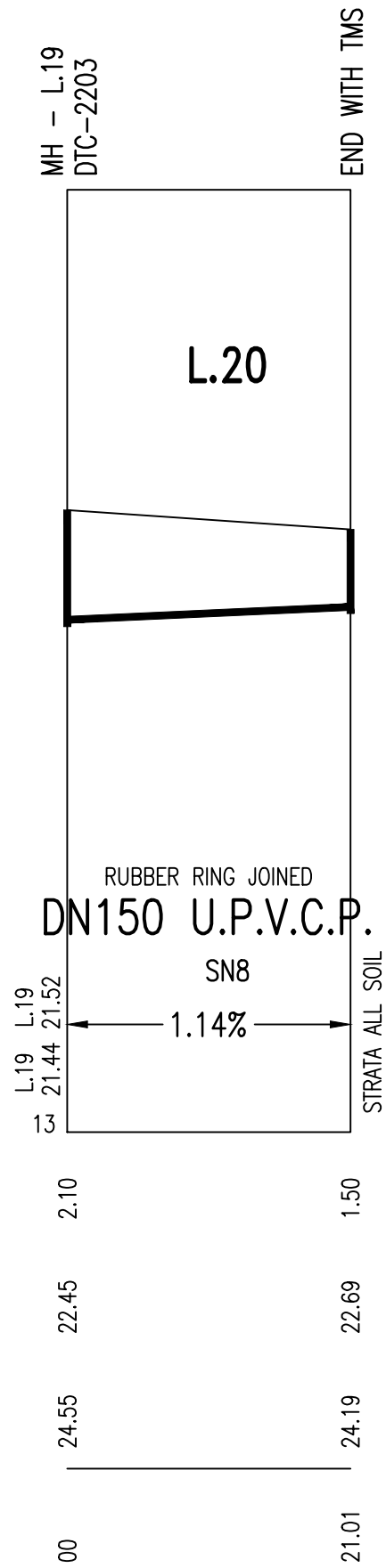
WORK AS CONSTRUCTED CERTIFICATION		 SYDNEY WATER CORPORATION	
DEVELOPER	WOORONG PARK PTY LTD	Case No. 180446WW <div> SHT 7 OF 12 SHTS. </div>	
W.S.C.	QALCHEK PTY LTD		
CONSTRUCTOR	C.J. DOYLE CONTRACTING		
COMPLETED	10.08.2020		
W.A.C. PREPARED	11.08.2020		
DESIGNER	QALCHEK PTY LTD	SYDNEY WATER CORPORATION	
I CERTIFY THAT THE WORKS HAVE BEEN CONSTRUCTED IN ACCORDANCE WITH THE WORK AS CONSTRUCTED DRAWINGS		FOR DETAILS OF SERVICES SEE SHEET 1	



1	WORK AS CONSTRUCTED	J.V.	11.08.20
F	BDY CHANGES LOTS 5128-5131, L20 AMENDED	F.J.	04.03.20
E	CATCHMENT PLAN ADDED ON SHEET 12	F.J.	14.01.20
D	DETAIL SHEET 10 AMENDED (SWC REQUEST)	F.J.	12.12.19
C	ISSUE FOR APPROVAL	F.J.	19.10.19
B	SMALL LAYOUT CHANGE L3, L4	F.J.	27.09.19
A	LAYOUT FOR REVIEW	F.J.	07.08.19
No.	AMENDMENT DESCRIPTION	BY	DATE

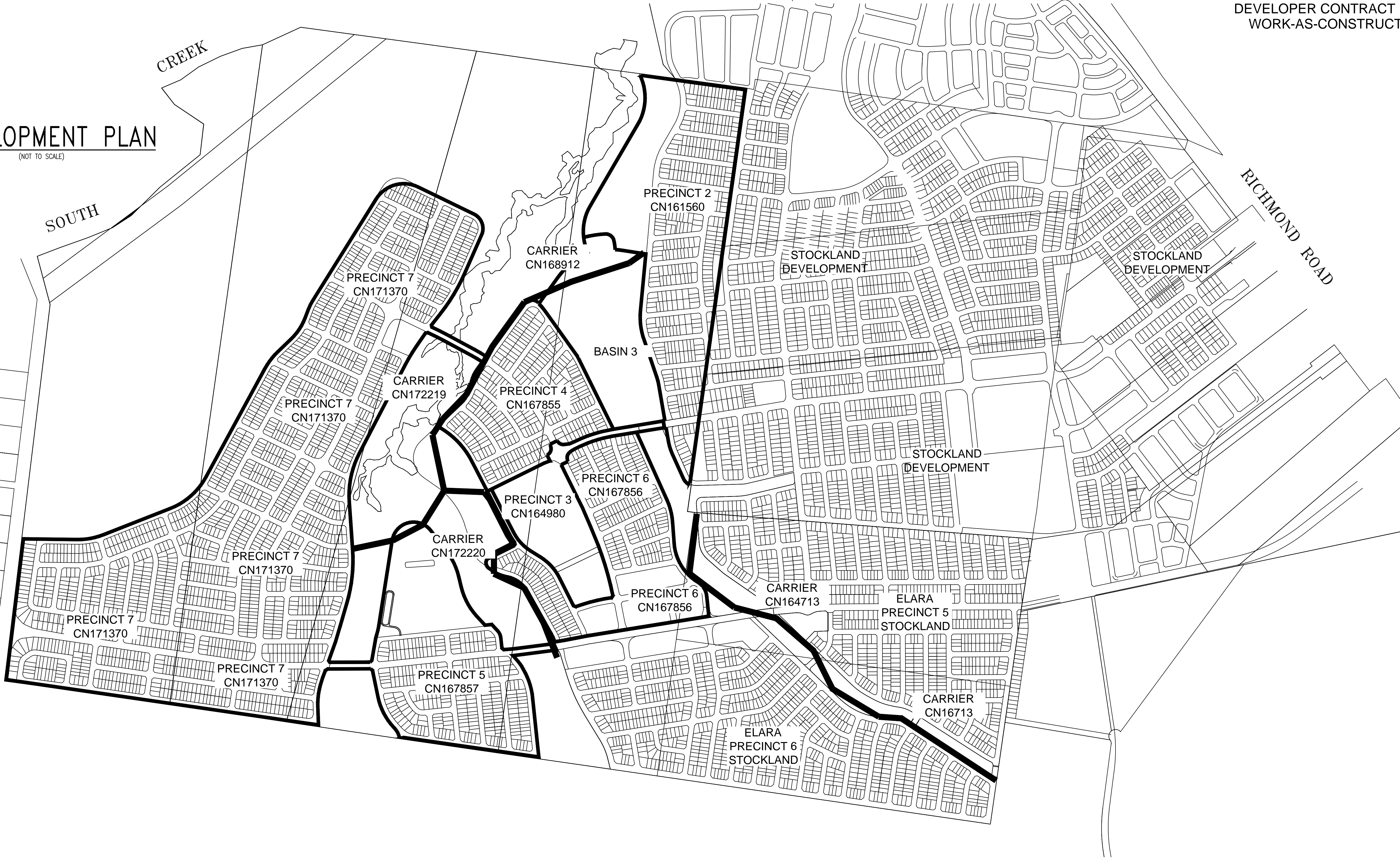
WORK AS CONSTRUCTED CERTIFICATION		Sydney <i>WATER</i>		SYDNEY WATER CORPORATION	
DEVELOPER	WOORONG PARK PTY LTD.	Case No.180446WW		SHT 8 OF 12 SHTS.	
W.S.C.	QALCHEK PTY LTD.				
CONSTRUCTOR	C.J. DOYLE CONTRACTING				
COMPLETED	10.08.2020				
W.A.C. PREPARED	11.08.2020				
DESIGNER	QALCHEK PTY LTD.	SYDNEY WATER CORPORATION			
I CERTIFY THAT THE WORKS HAVE BEEN CONSTRUCTED IN ACCORDANCE WITH THE WORK AS CONSTRUCTED DRAWINGS		FOR DETAILS OF SERVICES SEE SHEET 1			





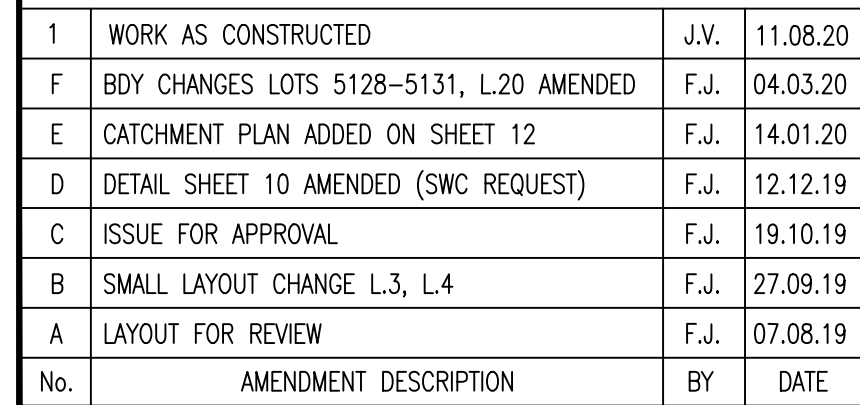
LINE No.	CHAINAGE	TYPE (MH/MS/MC)	DN RISER	CLASS OF COVER	MATERIAL (PVC-U,PE,PP,GRP, CAST IN SITU CONC,PRE-CAST CONC, OTHER - SPECIFY)	COMMENTS (BRAND/DT/C No/ISSUE, DATE/NA, OTHER AS REQUIRED)
1	108.65	MS	225	B	UPVC	AS PER WSA-137
1	228.63	MS	225	B	UPVC	AS PER WSA-137
1	307.09	MH	1050	B	IN-SITU CONCRETE	DTC-2203
1	319.72	MH	1200	D	IN-SITU CONCRETE	DTC-2200, TYPE 1 ROOFSLAB
1	340.52	MH	1200	D	IN-SITU CONCRETE	DTC-2200, TYPE 1 ROOFSLAB
1	367.38	MH	1200	D	IN-SITU CONCRETE	DTC-2200, TYPE 1 ROOFSLAB
1	397.81	MH	1200	D	IN-SITU CONCRETE	DTC-2200, TYPE 1 ROOFSLAB
1	447.15	MH	1050	B	IN-SITU CONCRETE	DTC-2203
1	455.13	MH	1050	B	IN-SITU CONCRETE	DTC-2203
1	477.36	MH	1050	B	IN-SITU CONCRETE	DTC-2203
1	492.19	MS	225	B	UPVC	AS PER WSA-137
1	519.84	MS	225	B	UPVC	AS PER WSA-137
1	545.52	MS	225	B	UPVC	AS PER WSA-137
1	584.57	MS	225	B	UPVC	AS PER WSA-137
1	602.08	MS	225	B	UPVC	AS PER WSA-137
1	625.40	MS	225	B	UPVC	AS PER WSA-137
1	704.89	MH	1050	B	IN-SITU CONCRETE	DTC-2203
1	782.86	MS	225	B	UPVC	AS PER WSA-137
1	861.86	MS	225	B	UPVC	AS PER WSA-137
1	907.26	MS	225	B	UPVC	AS PER WSA-137
1	930.85	MS	225	B	UPVC	AS PER WSA-137
1	947.43	MS	225	B	UPVC	AS PER WSA-137
1	1019.32	MH	1050	B	IN-SITU CONCRETE	DTC-2203
1	1095.72	MS	225	B	UPVC	AS PER WSA-137
1	1135.79	TMS	225	B	UPVC	AS PER WSA-137
2	89.37	MS	225	B	UPVC	AS PER WSA-137
2	176.50	MS	225	B	UPVC	AS PER WSA-137
2	183.95	MH	1050	B	IN-SITU CONCRETE	DTC-2203
2	207.07	MS	225	B	UPVC	AS PER WSA-137
2	229.30	MS	225	B	UPVC	AS PER WSA-137
2	257.26	MS	225	B	UPVC	AS PER WSA-137
2	335.45	MH	1050	B	IN-SITU CONCRETE	DTC-2203
2	354.07	TMS	225	B	UPVC	AS PER WSA-137
3	27.66	MH	1050	B	IN-SITU CONCRETE	DTC-2203
3	95.64	TMS	225	B	UPVC	AS PER WSA-137
4	55.96	TMS	225	B	UPVC	AS PER WSA-137
5	41.36	TMS	225	B	UPVC	AS PER WSA-137
6	18.60	TMS	225	B	UPVC	AS PER WSA-137
7	8.98	TMS	225	B	UPVC	AS PER WSA-137
8	20.60	MH	1050	B	IN-SITU CONCRETE	DTC-2203
8	48.58	MS	225	B	UPVC	AS PER WSA-137
8	124.37	MS	225	B	UPVC	AS PER WSA-137
8	194.31	MH	1050	B	IN-SITU CONCRETE	DTC-2203
8	196.67	MS	300	B	UPVC	AS PER WSA-137 (DN300 RISER)
8	242.13	MH	1050	B	IN-SITU CONCRETE	DTC-2203
8	268.32	MS	225	B	UPVC	AS PER WSA-137
8	274.53	MS	225	B	UPVC	AS PER WSA-137
8	359.32	MS	225	B	UPVC	AS PER WSA-137
8	419.41	MS	225	B	UPVC	AS PER WSA-137
8	424.16	MS	225	B	UPVC	AS PER WSA-137
8	437.56	TMS	225	B	UPVC	AS PER WSA-137
9	18.72	MH	1050	B	IN-SITU CONCRETE	DTC-2203
9	41.94	MH	1050	B	IN-SITU CONCRETE	DTC-2203
9	48.63	MH	1050	B	IN-SITU CONCRETE	DTC-2203
9	67.43	MS	225	B	UPVC	AS PER WSA-137
9	77.59	MS	225	B	UPVC	AS PER WSA-137
9	88.89	MH	1050	B	IN-SITU CONCRETE	DTC-2203
9	107.64	MS	225	B	UPVC	AS PER WSA-137
9	138.31	MS	225	B	UPVC	AS PER WSA-137
9	191.97	MH	1050	B	IN-SITU CONCRETE	DTC-2203
9	211.56	TMS	225	B	UPVC	AS PER WSA-137
10	10.59	MS	225	B	UPVC	AS PER WSA-137
10	20.58	MS	225	B	UPVC	AS PER WSA-137
10	44.91	MS	225	B	UPVC	AS PER WSA-137
10	59.96	MS	225	B	UPVC	AS PER WSA-137
11	18.55	TMS	225	B	UPVC	AS PER WSA-137
12	18.96	TMS	225	B	UPVC	AS PER WSA-137
13	16.11	TMS	225	B	UPVC	AS PER WSA-137
14	23.03	MS	225	B	UPVC	AS PER WSA-137
14	29.08	MS	225	B	UPVC	AS PER WSA-137
14	127.72	MS	225	B	UPVC	AS PER WSA-137
14	162.81	MH	1050	B	IN-SITU CONCRETE	DTC-2203
14	180.43	TMS	225	B	UPVC	AS PER WSA-137
15	27.45	MS	225	B	UPVC	AS PER WSA-137
15	36.49	MS	225	B	UPVC	AS PER WSA-137
15	43.86	MS	225	B	UPVC	AS PER WSA-137
15	76.41	TMS	225	B	UPVC	AS PER WSA-137
16	30.09	MS	225	B	UPVC	AS PER WSA-137
16	40.65	MS	225	B	UPVC	AS PER WSA-137
16	48.03	MS	225	B	UPVC	AS PER WSA-137
16	153.03	MH	1050	B	IN-SITU CONCRETE	DTC-2203
16	171.14	TMS	225	B	UPVC	AS PER WSA-137
17	16.56	TMS	225	B	UPVC	AS PER WSA-137
18	29.13	MS	225	B	UPVC	AS PER WSA-137
18	41.61	MS	225	B	UPVC	AS PER WSA-137
18	47.74	MS	225	B	UPVC	AS PER WSA-137
18	107.48	MH	1050	B	IN-SITU CONCRETE	DTC-2203
18	191.84	TMS	225	B	UPVC	AS PER WSA-137
19	3.28	MS	225	B	UPVC	AS PER WSA-137
19	28.16	MH	1050	B	IN-SITU CONCRETE	DTC-2203
19	31.06	MS	225	B	UPVC	AS PER WSA-137
19	41.27	MS	225	B	UPVC	AS PER WSA-137
19	161.48	TMS	225	B	UPVC	AS PER WSA-137
20	21.01	TMS	225	B	UPVC	AS PER WSA-137

WORK AS CONSTRUCTED CERTIFICATION		<div><div>Sydney</div><div>WATER</div></div> <div>SYDNEY WATER CORPORATION</div>	
DEVELOPER	WOORONG PARK PTY LTD	<div>Case No. 180446VWW</div> <div>SHT 10 OF 12 SHTS.</div>	
W.S.C.	QALCHEK PTY LTD		
CONSTRUCTOR	C.J. DOYLE CONTRACTING		
COMPLETED	10.08.2020		
W.A.C. PREPARED	11.08.2020	<div>SYDNEY WATER CORPORATION</div> <div>FOR DETAILS OF SERVICES SEE SHEET 1</div>	
DESIGNER	QALCHEK PTY LTD		
I CERTIFY THAT THE WORKS HAVE BEEN CONSTRUCTED IN ACCORDANCE WITH THE WORK AS CONSTRUCTED DRAWINGS			



1	WORK AS CONSTRUCTED	J.V.	11.08.20
F	BOY CHANGES LOTS 5128-5131, L20 AMENDED	F.J.	04.03.20
E	CATCHMENT PLAN ADDED ON SHEET 12	F.J.	14.01.20
D	DETAIL SHEET 10 AMENDED (SWC REQUEST)	F.J.	12.12.19
C	ISSUE FOR APPROVAL	F.J.	19.10.19
B	SMALL LAYOUT CHANGE L3, L4	F.J.	27.09.19
A	LAYOUT FOR REVIEW	F.J.	07.08.19
No.	AMENDMENT DESCRIPTION	BY	DATE


WORK AS CONSTRUCTED CERTIFICATION		Sydney WATER		SYDNEY WATER CORPORATION	
DEVELOPER	WOORONG PARK PTY LTD	Case No. 180446WWW	SH1	11	OF 12
W.S.C.	QALCHEK PTY LTD				
CONSTRUCTOR	C.J. DOYLE CONTRACTING				
COMPLETED	10.08.2020				
W.A.C. PREPARED	11.08.2020				
DESIGNER	QALCHEK PTY LTD	SYDNEY WATER CORPORATION			
I CERTIFY THAT THE WORKS HAVE BEEN CONSTRUCTED IN ACCORDANCE WITH THE WORK AS CONSTRUCTED DRAWINGS		FOR DETAILS OF SERVICES SEE SHEET 1			



SUMMARY													
SECTION	CHAINAGE	TOTAL AREA	TOTAL Grav	TOTAL Grav + Pump	PIPE SIZE (DN)	PIPE SIZE (ID)	PIPE GRADE	DESIGN FLOW (DF)	Qf (Capacity)	Actual	SELF CLEANSING	SLIME CONTROL	Capacity
	m	Ha	EP	EP	mm	mm	%	L/s	L/s	PDWF			Deficit
A-B	0-307	9.85	1012	1012	225	233.6	1	16.67	50.41	5.57	Self Cleansing OK	NA	OK
B-C	307-455	7.85	809	809	225	225	0.47	14.22	31.21	4.75	Self Cleansing OK	NA	OK
C-D	455-705	3.89	413	413	225	233.6	0.56	9.10	37.66	3.04	Self Cleansing OK	NA	OK
D-E	705-784	3.43	364	364	225	233.6	0.6	8.41	38.99	2.81	Self Cleansing OK	NA	OK
E-F	784-862	2.39	256	256	150	149.6	0.71	6.79	12.93	2.27	Self Cleansing OK	NA	OK

[illegible]

FLOWCHART 'A' TO 'F' 14.01.2020

WORK AS CONSTRUCTED CERTIFICATION		 SYDNEY WATER CORPORATION	
DEVELOPER	WOORONG PARK PTY LTD	Case No. 180446WWW	SHT 12 OF 12 SHTS.
W.S.C.	QALCHEK PTY LTD		
CONSTRUCTOR	C.J. DOYLE CONTRACTING		
COMPLETED	10.08.2020		
W.A.C. PREPARED	11.08.2020		
DESIGNER	QALCHEK PTY LTD	SYDNEY WATER CORPORATION	
I CERTIFY THAT THE WORKS HAVE BEEN CONSTRUCTED IN ACCORDANCE WITH THE WORK AS CONSTRUCTED DRAWINGS		FOR DETAILS OF SERVICES SEE SHEET 1	