



Design Guidelines

Welcome to Newport.

The Newport Design Guidelines have been produced to help create a well-designed, high quality streetscape at Newport and to protect your investment in your new home. The Newport Design Guidelines form part of the Contract of Sale for your block of land (lot) and are also included in the restrictions on title known as the 88B.

The Newport Design Guidelines apply in addition to and not in lieu of other statutory requirements and approvals. Approval by Blacktown Council under its Development Control Plan (DCP) or by a Private Certifier (PCA) under the NSW Housing Code (CDC) will still be required.

The Newport Design Review Panel (DRP) will review all proposed home designs within Newport for compliance. Purchasers or their selected Builders or Designers must submit their house designs along with their landscape plans for review and approval by the Newport DRP prior to lodgement with Blacktown City Council or a Private Certifier for approval.

Also as an incentive for Land Only purchasers if your home and landscaping are completed and you apply within 24 months (two years) of your land settlement with the developer you will be eligible to receive your Design Guidelines Compliance Payment.

If you have any questions you can ask at the Newport Sales and Information Centre or by emailing the DRP at newparkdesignreview@winten.com.au

Building at Newport



STEP 1

Inform Your Builder About The Design Guidelines

Provide your builder with a copy of the Newport Design Guidelines, also available for download from the Newport website. Make sure your builder understands that it is a condition of your Sale of Land Contract and Restrictions on Title (88B) that you must comply with the Newport Design Guidelines.



STEP 2

Seek Newport Design Review Panel Approval

Prior to the lodgement of your plans for approval with Blacktown City Council (or an accredited Private Certifier), you or your builder or designer (on your behalf) must ensure that your house is approved by the Newport DRP. Complete the Newport Design Guideline Application Checklist (available from <https://newpark.com.au/building-at-newpark>) and submit along with your building plans, colour scheme and landscape plan for approval. You, your builder or designer can lodge the plans with the DRP via email at newparkdesignreview@winten.com.au.



STEP 3

Newport Design Review Panel (DRP) Grants Approval

Following review of your application the DRP may approve your building plans, landscaping plans and colour scheme. If there is any non-compliance to the Design and Landscaping Guidelines you will be asked to resubmit your application. The DRP will stamp your plans and return them to you (or your builder or designer) with a letter of approval. If you wish to lodge your plans for approval with Blacktown City Council prior to settlement the DRP can also provide an owner's consent to lodge letter.



STEP 4

Completion Of Works And Application For Design Guidelines Compliance Payment

If your building and landscape works are completed as approved, you have rectified any damage and you apply by lodging the Application Form with the DRP within 24 months (two years) of the settlement of your block of land you will be eligible for the Design Guidelines Compliance Payment to be paid to you.



STEP 5

Payment Of Design Guidelines Compliance Payment

A representative of the DRP will inspect your home and landscaping to check all the works have been completed in accordance with the DRP approved building and landscape plans. Once the completion of the works in accordance with the DRP approval has been verified, the Design Guidelines Compliance Payment will be paid to you.

Colour Schemes

Paint and Render Colours

Paint and render colours should suit your brick and roof materials and be in line with or based on the two Rendered and Paint Colour Schemes below. Each of the colour schemes 'Trees and Grasses', and 'Wood and Earth', include a number of trim accent and background colours. Choose one of each for your house. Background and accent colours are to be used for large expanses of the house such as wall materials, cladding or painted masonry. Strong/ bright colours are restricted to highlights and trim such as columns and beams, windows and door frames, the front door, gutters and downpipes, handrails and pergolas.

Face Brick

Face brick which forms the main wall material is to be generally flat-faced, square-edged and not deeply textured. The brick colour is to be generally uniform throughout the brick and provide a consistent wall colour. Pale or white coloured bricks are not permitted. Mid to darker tone bricks are preferred.

Roof

Roof colours such as mid-range greys to charcoal are suitable. Bright red terracotta, bright blue, pure black or pure white are not permitted.

Driveways and Paths

Driveways and paths in the front yard (private land) must be either a broom finished coloured concrete; plain patterned stencilled or stamped concrete. Driveways and paths in the public road reserve (verge areas) must be plain concrete with a broom finish.

Retaining Walls

Retaining walls in the front or side yard areas that are visible from the street must be masonry and must be either painted masonry to match the house or masonry blocks in charcoal or natural earth colours and tones.

Trees and Grass

Tree and Grasses - Palette 1





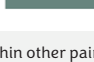
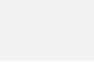
	Trim Colour C23 Woodland Grey EB
	Accent Colour A251 Army Greens D
	Accent Colour A251 Battle Dress D
	Background Colour A251 Moorland W
	Background Colour A252 Lamb's Ears W
	Trim Colour C20 Plantation EB

Tree and Grasses - Palette 2

	Trim Colour A202 Congo Brown BY
	Accent Colour A203 Irrigation UD
	Accent Colour A203 Knapsack D
	Background Colour A203 Tuft W
	Background Colour A204 Grand Piano W
	Trim Colour C160 Warm Spice BY

Roof Colour for Tree and Grasses - Palette 1

Colours for Colorbond or tiled roofs for each palette are included below. These colours can also be used for accents and trims elsewhere on your house.

	Colorbond Colour C23 Woodland Grey EB
	Colorbond Colour C20 Plantation EB
	Colorbond Colour C3 Summershade W
	Colorbond Colour C13 Bushland D
	Colorbond Colour C18 Windspray D
	Colorbond Colour C19 Ironstone UD
	Colorbond Colour C10 Wilderness UD

Roof Colour for Tree and Grasses - Palette 2

	Colorbond Colour C3 Summershade W
	Colorbond Colour C17 Jasper UD
	Colorbond Colour C22 Estate EB
	Colorbond Colour C23 Woodland Grey EB

Driveways and Paths for Trees and Grasses - Colour - Palette 1

	Dulux Colour GR10 Domino
--	-----------------------------

Driveways and Paths for Trees and Grasses - Colour - Palette 2

	Dulux Colour H23 Charcoal Chintz
---	-------------------------------------

Driveways and Paths for Trees and Grasses - Colour - Palette 3

	Dulux Colour GR8 Monk
---	--------------------------

Driveways and Paths for Trees and Grasses - Colour - Palette 4

Please note: While Dulux colours are specified, equivalent colours within other paint brands are allowed. Half and quarter mixes of each tint are also allowed.

Wood and Earth

Wood and Earth - Palette 1

	Trim Colour C22 Estate EB
	Accent Colour A143 Sea Elephant UD
	Accent Colour A143 Toffee Fingers D
	Background Colour A143 Blind Date W
	Background Colour A168 Limed White W
	Trim Colour A142 Abbot O

Wood and Earth - Palette 2




	Trim/Background Colour C8 Dune W
	Accent Colour A152 Baton UD
	Accent Colour A152 Snuggle Pie D
	Background Colour A152 Puddle W
	Background Colour A165 Light Roce W
	Trim Colour A151 Bunker EB

Roof Colour for Wood and Earth - Palette 1

Colours for Colorbond or tiled roofs for each palette are included below. These colours can also be used for accents and trims elsewhere on your house.

	Colorbond Colour C13 Bushland D
	Colorbond Colour C22 Estate EB
	Colorbond Colour C8 Dune W
	Colorbond Colour C4 Shale Grey W
	Colorbond Colour C23 Woodland Grey EB

Roof Colour for Wood and Earth - Palette 2

	Colorbond Colour C8 Dune W
	Colorbond Colour C12 Stone D
	Colorbond Colour C22 Estate EB
	Colorbond Colour C23 Woodland Grey EB

Driveways and Paths for Trees and Grasses - Colour - Palette 1

	Dulux Colour GR10 Domino
---	-----------------------------

Driveways and Paths for Trees and Grasses - Colour - Palette 2

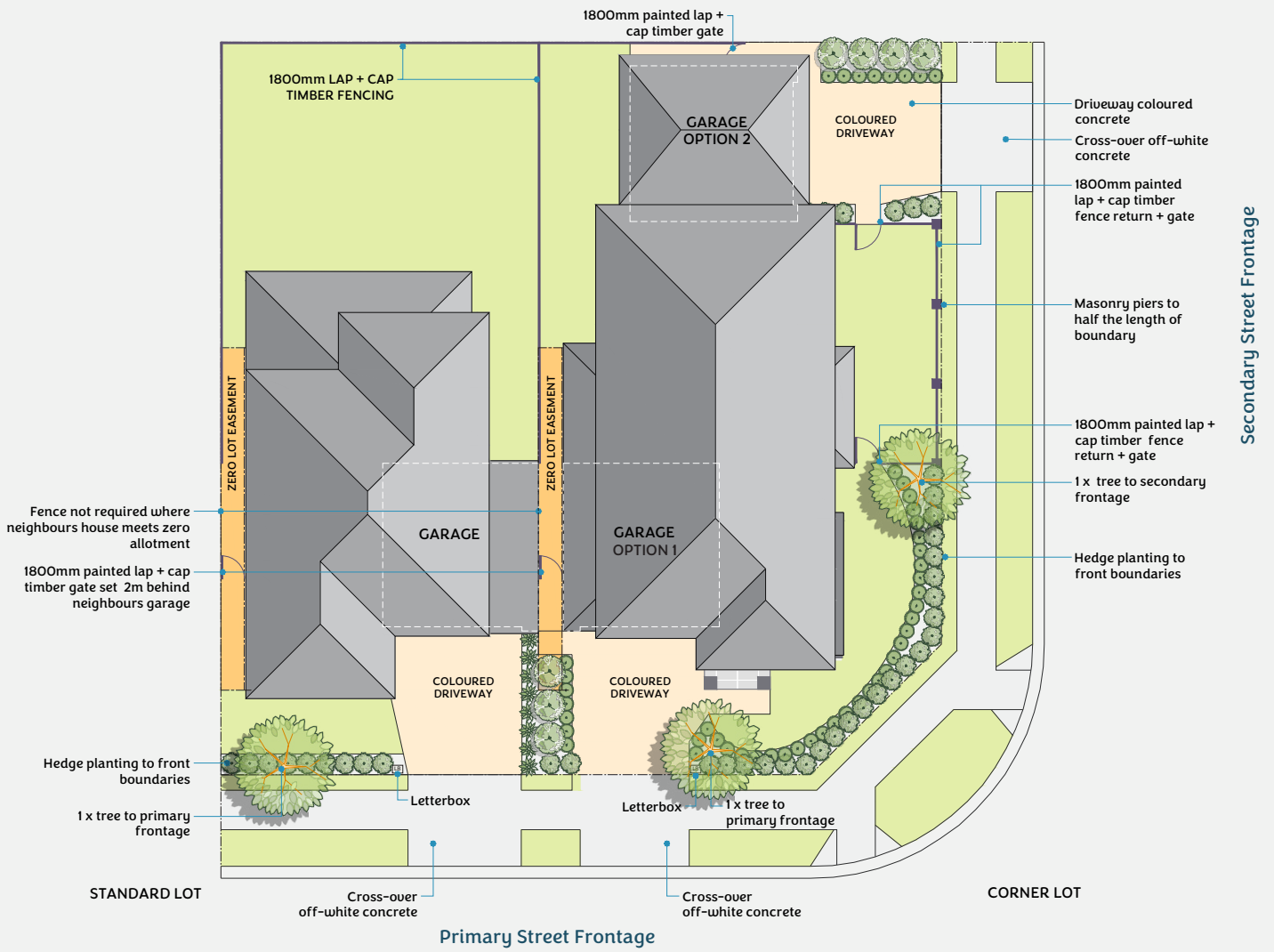
	Dulux Colour H23 Charcoal Chintz
---	-------------------------------------

Driveways and Paths for Trees and Grasses - Colour - Palette 3

	Dulux Colour GR8 Monk
---	--------------------------

Driveways and Paths for Trees and Grasses - Colour - Palette 4

Please note: While Dulux colours are specified, equivalent colours within other paint brands are allowed. Half and quarter mixes of each tint are also allowed.



Compliance Payment

For Land Only purchasers the Newpark Design Guidelines Compliance Payment is \$5,000 for all lots and \$10,000 for corner lots. **Please note there are no Compliance Payments for Home and Land Packages purchased through Newpark partner builders.**

The Special Conditions in the Land Sale Contract offers Land Only purchasers a Design Guidelines Compliance Payment once their new home and landscaping is complete and the conditions of the offer have been satisfied.

Conditions of the Design Guidelines Compliance Payment are:

- Your home, landscaping, driveways and fencing as approved, has been completed within 24 months of the settlement of your lot with the developer.
- You (and your builder) have been careful during construction to minimise any damage to the street, footpath, verge, services, public landscape or street tree.
- Any damage to the surrounding public areas including streets, street trees, footpaths, nature strips, services and adjoining land caused by the construction of your home has been rectified (at your cost).
- No changes (unless endorsed by the DRP) have occurred to the exterior of the home or landscaping as approved by the DRP.
- Your home and landscaping is being maintained to a tidy and reasonable standard.

To apply for your Compliance Payment complete the Newpark Compliance Payment Application Form, available to download from the Newpark website on the 'Building at Newpark' page, and email it to newparkdesignreview@winten.com.au within 24 months of settlement of your lot with the developer.

Your Plans

Your plans being submitted to the Newpark DRP for approval must include House Plans, Landscape Plan, and Materials and Colour Scheme.

House Plans

House plans must include:

- Site plan with levels.
- Street elevations, showing all materials.
- Floor plans.

Landscape Plan

A landscape plan or the landscaping works may be shown on the Site Plan.

The landscape plan should include the following elements in the front yard, and side yard of secondary street frontages on corner lots:

- Location of proposed hedge plants including species, quantity, size and pot sizes.
- Turf, front hedge, garden and edges.
- Trees – 1 x tree to front street and 1 x tree to side street on corner lots.
- Retaining walls – including location, height and materials.
- Driveway location and finish – off-white concrete to public road reserve and coloured concrete on private lot.
- Paths and hard paving areas, size and finish.
- Fencing including Secondary street fencing to corner lots.
- Letterbox pier location and finish.

Materials and Colour Scheme

Must comply with the Newpark Colour Schemes and include:

- Brick type – include a picture/photo.
- Roof type and colour.

- Colour of the private driveway concrete (public street crossover to be off-white concrete),
- Colours of windows, garage doors, handrails, downpipes, fascia and gutter.
- All paint colours.

Design Guidelines

House Design

- All homes in Newpark must be two storey dwellings. No single storey homes are permitted, except Lots 2162 and 4087 only.
- The primary or main roof must be a hip roof, some gable and/or parapet elements are allowed (including to the garage). No skillion roofs are to be visible from the street, only permitted at the rear of the ground floor).
- Front facades must include articulation and a mix of materials and colours.
- Colours and materials must be selected from the Newpark Colour Schemes.
- No mottle, speckled, or light face bricks.
- No sliding windows to the primary facade (awning or double-hung permitted).

Landscaping, Fences, Paths and Driveways

- Driveway and crossover from the street to the property boundary must be off white concrete). Private driveway and paths within the property boundary can be coloured concrete (colour must be selected from the Newpark Colour Schemes).
- A masonry letterbox pier in face brick or painted in a colour that complements the house.
- No front fences are allowed, a planted hedge in a garden bed is required to the front boundary.
- Front yard landscaping to the street must include a minimum of one small tree and hedge plants (300mm pots) on the boundary and turf.
- Any retaining walls visible from the street or public place must be masonry.
- Side and rear fences must be 1800mm lapped and capped timber and not extend forward of a point 1m back from the front of the dwelling or the neighbouring dwelling. Any timber fencing visible from the street must be painted in a dark colour that complements the house.
- Side gates must be painted a dark colour to match the house (must be noted on the plan).

Corner Lots (Controls for Secondary Street Frontage)

- Secondary street facades for corner lots must include articulation and a mix of materials and colours.
- No sliding windows to the secondary street facade (awning or double hung permitted).
- No front fences are allowed, the front planted hedge in a garden bed is required to return along the front section of the secondary street boundary.
- Front side yard landscaping to the secondary street must include a minimum of one additional small tree (2 trees in total) and hedge plants (300mm pots) on the secondary street boundary and turf.
- Any retaining walls visible from the secondary street or a public place must be masonry.
- The rear section of fence on the secondary street enclosing the rear or side yard must be 1800mm high lapped and capped timber (painted in a dark colour) between masonry piers of face brick or bagged and painted in a colour that complements the house. Painting the fence must be noted on the plan. The maximum length of this fence is half the length of the lot boundary.



newpark.com.au

Phone: 1300 122 500 Sales Office: 921 Richmond Road (corner of Quarry Road) Marsden Park
Newpark is accessed via Elara Boulevard in Marsden Park

This plan is provided solely for the purpose of providing an impression of the proposed development called Newpark, as well as the approximate location of existing and proposed third party facilities, services or destinations, and is not intended to be used for any other purpose. Winten Property does not make any representation or give any warranty in relation to the future development of the site, or the current or future location or existence of any facilities, services or destinations. The plan is based on the intention of, and information available to, Winten Property Group at the time of creation of the plan and details may change due to future circumstances. Any indications of distance or size are approximate and for indicative purposes only, and are not to scale. Information correct as at November 2017. Printed August 2018 WIP0155

