

**\$485,735**

Home Price

**\$530,000**

Land Price

**\$1,015,735**

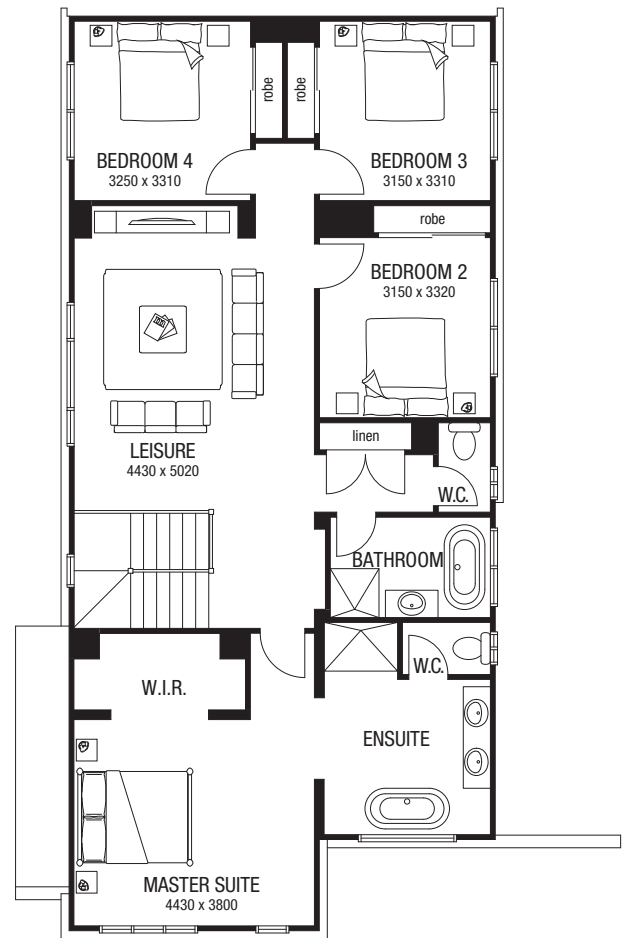
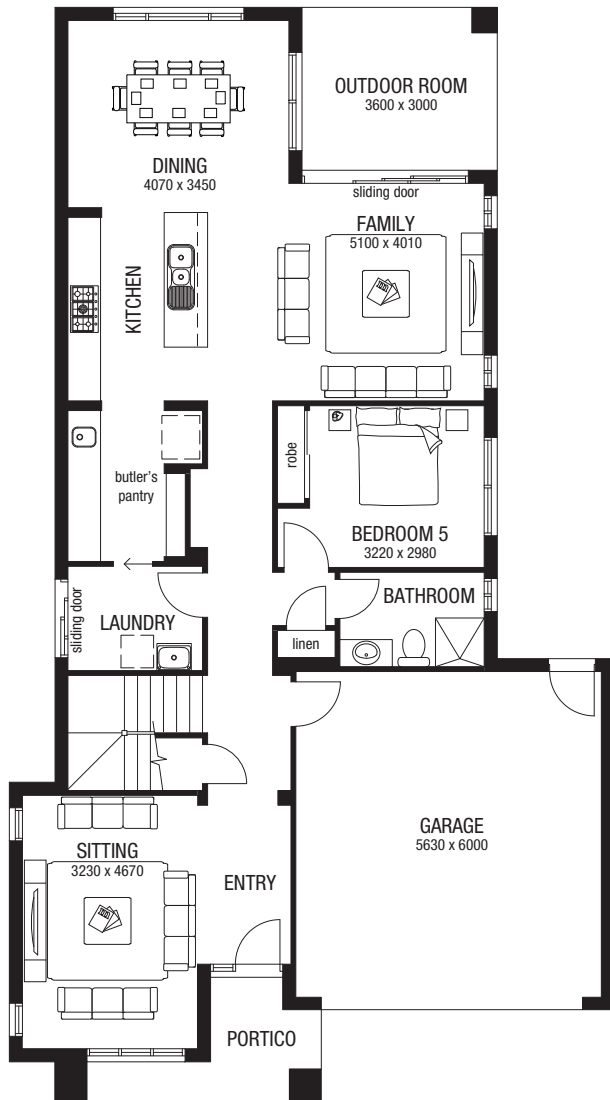
Home & Land Package

bed	bath	car
5	3	2



## Inclusions

- Fujitsu ducted air-conditioning
- Landscaping including:
  - Kikuyu turf to front (including nature strip), rear and sides
  - (1No.) native tree
  - Up to 20m<sup>2</sup> of garden soil, pine mulch and 150mm-300mm native plants
- Wall mounted clothesline
- Brick letterbox with metal insert, painted render finish and house number
- 1800mm high treated pine lapped and capped fencing
- (1No.) 1800mm high x 900mm wide treated pine lapped and capped gate to side of home
- Chemical application to termaguard reticulation system
- Colour-on driveway with natural grey crossover
- Flyscreens and roller blinds to windows
- Upgrades to meet developers requirements
- Masonry fencing along secondary



Newpark is accessed via Elara Boulevard in Marsden Park  
**Phone 1300 122 500 [newpark.com.au](http://newpark.com.au)**

\*If applicable. ^Safety screens to all side and rear opening window sashes and sliding doors. Flyscreens to all front facade opening window sashes. Images are for illustrative purposes only and while every effort has been made to correctly represent colours for this scheme, actual colours may vary. Fridge not included. Materials, colours and brands are subject to availability and may be substituted if not available. Schemes may be changed without notice and external schemes are subject to developer covenant approval. This colour scheme is exclusive to The Breeze Series by Metricon and any approved customer variations may incur additional costs. For further information contact your property investment partner: NSW Builders License 174699C. 20180828 WIP0336