

Lot 5110

Lot size: 300m²

Ellenbrook 24

\$419,900

Home Price

\$485,000

Land Price

\$904,900

Home & Land Package

bed	bath	car
4	2.5	2



Inclusions

- Radisson Facade
- Advantage Series Luxury Standard Inclusions
- Stone Benchtop to Kitchen
- SMEG Kitchen Appliance Package
- Ceramic Floor Tiles From Builder's Range to Entry, Kitchen, Meals & Family Room
- Quality Wool Blend Sisal Carpet from Builder's Range to Balance of Home
- 'H' Class Slab
- Turf to Front & Rear Yards
- Front Landscaping Only (including front hedging & one small tree)
- Masonry Letterbox & Clothesline
- Fencing
- Masonry Retaining Walls to Front Yard
- Alarm System & Remote Controlled Garage Door
- Plain Concrete to Alfresco (where applicable)
- Driveway and Path to Entry
- Roof Sarking



Lot 5111

Lot size: 300m²

Ellenbrook 24

\$434,990

Home Price

\$485,000

Land Price

\$919,990

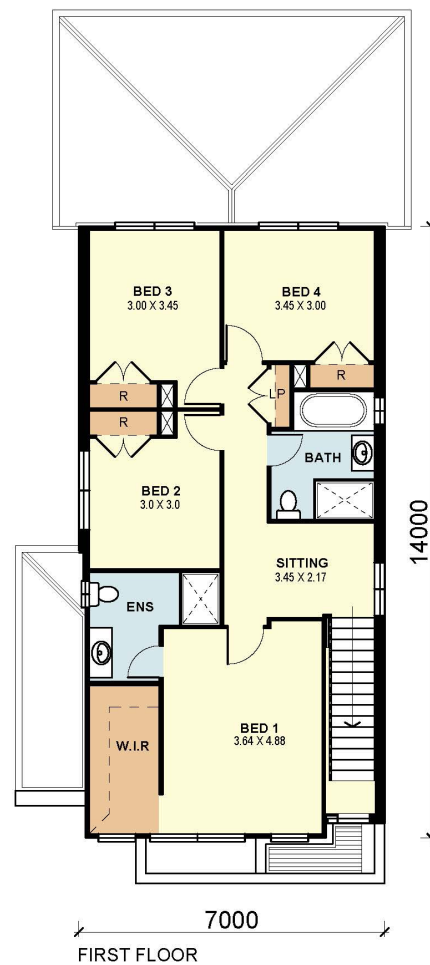
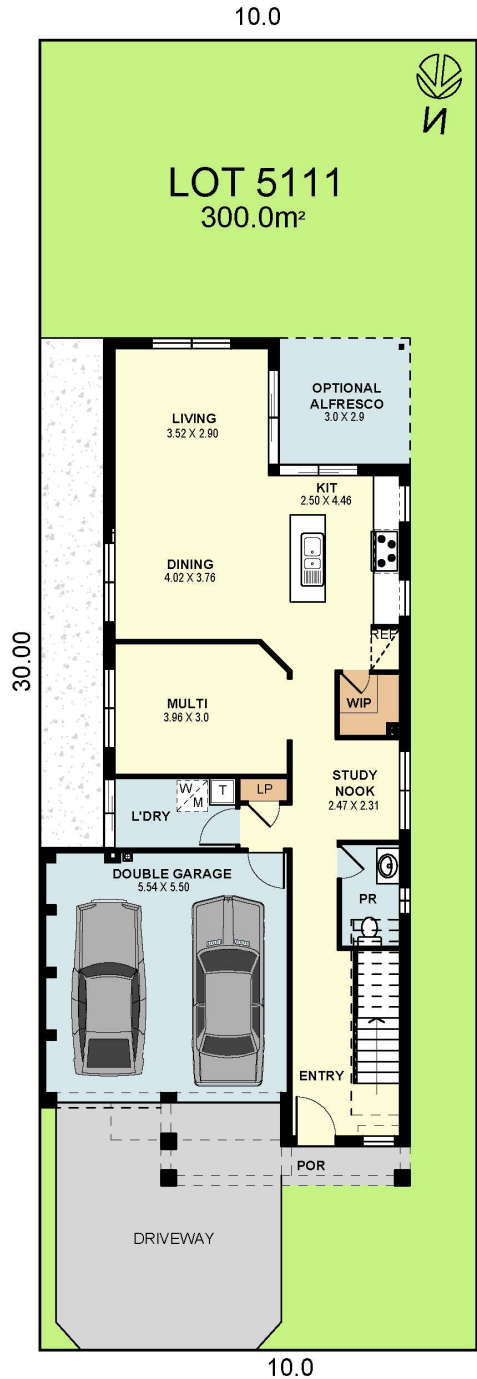
Home & Land Package

bed	bath	car
4	2.5	2



Inclusions

- Montville Facade
- Advantage Series Luxury Standard Inclusions
- Stone Benchtop to Kitchen
- SMEG Kitchen Appliance Package
- Ceramic Floor Tiles From Builder's Range to Entry, Kitchen, Meals & Family Room
- Quality Wool Blend Sisal Carpet from Builder's Range to Balance of Home
- 'H' Class Slab
- Turf to Front & Rear Yards
- Front Landscaping Only (including front hedging & one small tree)
- Masonry Letterbox & Clothesline
- Fencing
- Masonry Retaining Walls to Front Yard
- Alarm System & Remote Controlled Garage Door
- Plain Concrete to Alfresco (where applicable)
- Driveway and Path to Entry
- Roof Sarking



Lot 6238 Lot size: 356.1m²

Livingstone 16 Mk III

\$328,900

Home Price

\$456,000

Land Price

\$784,900

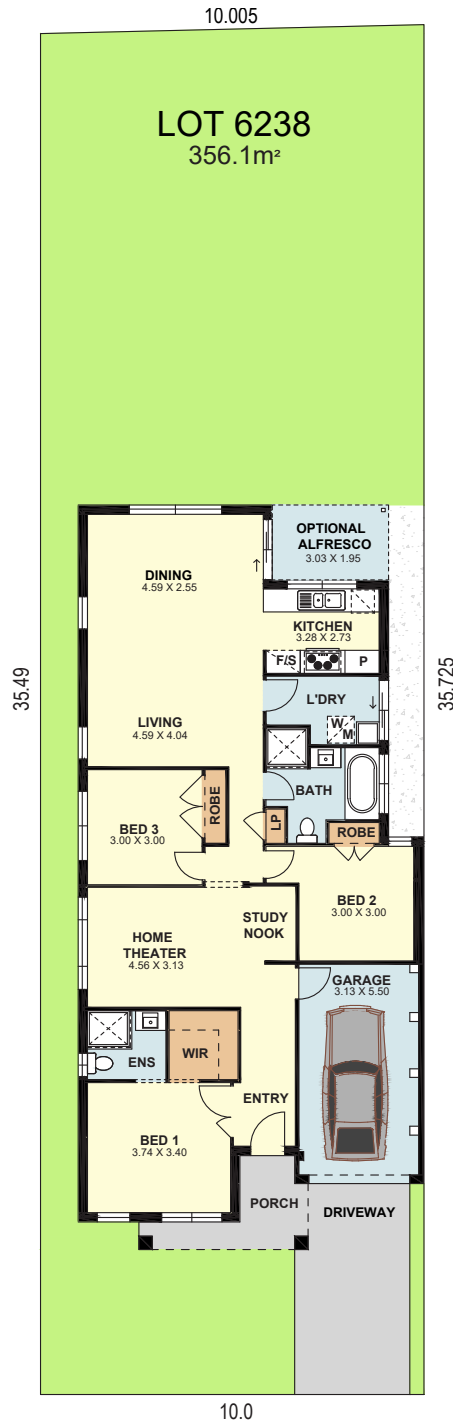
Home & Land Package

bed	bath	car
3	2	1



Inclusions

- Advantage Series Luxury Standard Inclusions
- Air Conditioning
- Stone Benchtop to Kitchen
- Smeg Kitchen Appliance Package
- Ceramic Floor Tiles from Builders Range to Entry, Kitchen, Meals & Family Room
- Quality Wool Blend Sisal Carpet from Builders Range to Balance of Home
- Alarm System & Remote Controlled Garage Door
- Driveway & Path to Entry
- Roof Sarking
- 'H' Class Slab
- Turf to Front Yard & Rear Yards
- Front Yard Landscaping Only (Includes Front Hedging & One Small Tree)
- Masonry Retaining Walls to Front Yard (Where Applicable)
- Masonry Letterbox & Clothes Line



\$344,900

Home Price

\$455,000

Land Price

\$799,900

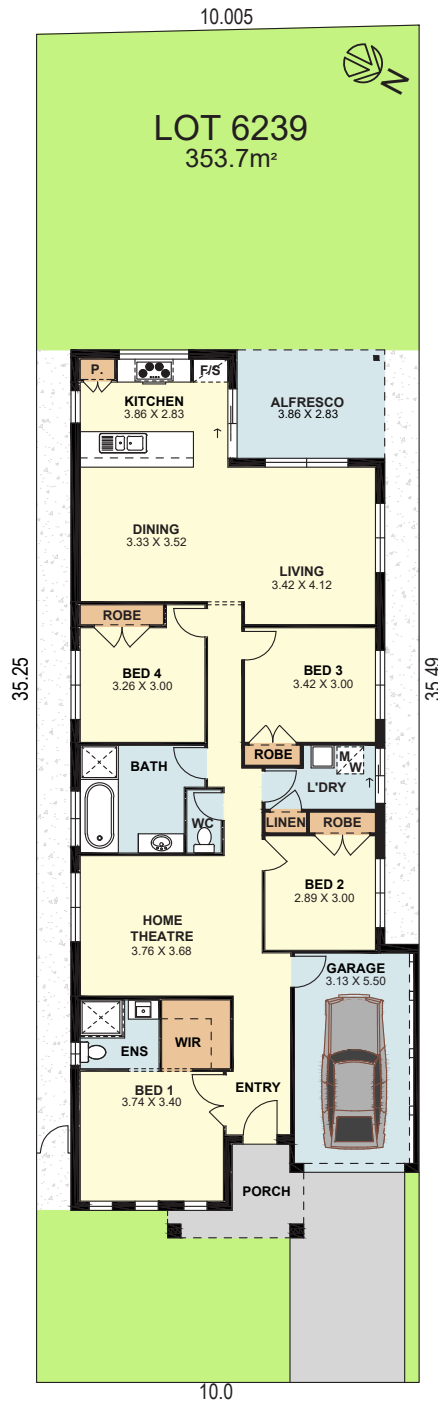
Home & Land Package

bed	bath	car
4	2	1



Inclusions

- Advantage Series Luxury Standard Inclusions
- Air Conditioning
- Stone benchtop to kitchen
- SMEG kitchen appliance package
- Ceramic floor tiles from Builders Range to entry, kitchen, meals & family room
- Quality wool blend sisal carpet from Builders Range to balance of home
- Alarm System & Remote Controlled Garage Door
- Driveway & path to entry
- Roof Sarking
- 'H' Class Slab
- Turf to front yard & rear yards
- Front yard landscaping only (includes front hedging & one small tree)
- Masonry Retaining walls to front yard (where applicable)
- Masonry letterbox & clothes line



Lot 6243 Lot size: 343.5m²

Ellenbrook 24

\$422,900

Home Price

\$470,000

Land Price

\$892,900

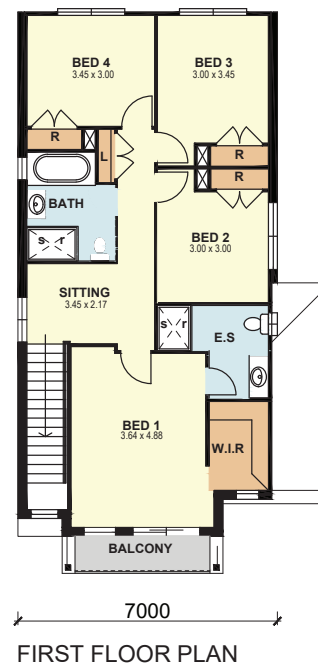
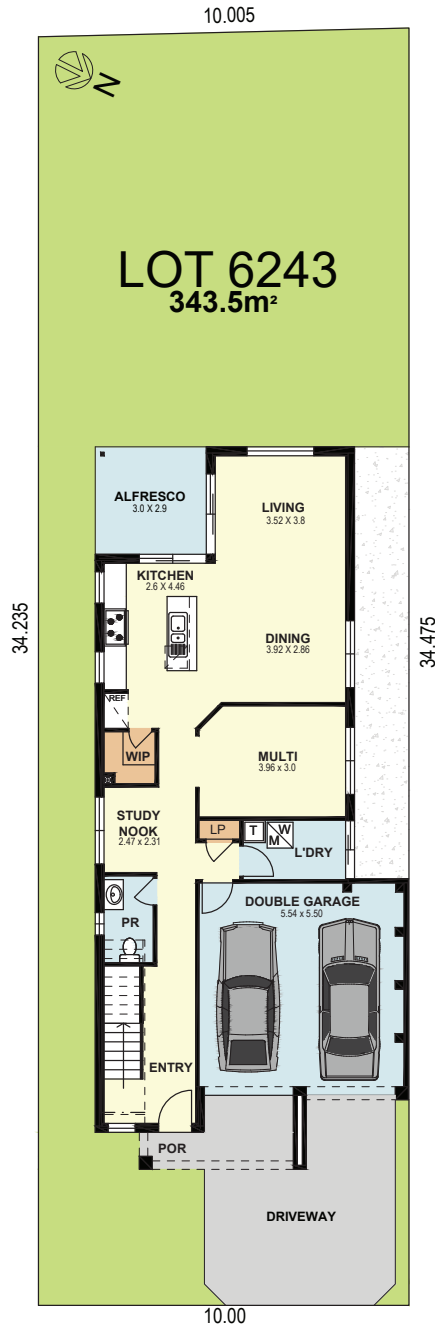
Home & Land Package

bed	bath	car
4	2.5	2



Inclusions

- Advantage Series Luxury Standard Inclusions
- Air Conditioning
- Stone Benchtop to Kitchen
- Smeg Kitchen Appliance Package
- Ceramic Floor Tiles from Builders Range to Entry, Kitchen, Meals & Family Room
- Quality Wool Blend Sisal Carpet from Builders Range to Balance of Home
- Alarm System & Remote Controlled Garage Door
- Driveway & Path to Entry
- Roof Sarking
- 'H' Class Slab
- Turf to Front Yard & Rear Yards
- Front Yard Landscaping Only (Includes Front Hedging & One Small Tree)
- Masonry Retaining Walls to Front Yard (Where Applicable)
- Masonry Letterbox & Clothes Line



\$422,900

Home Price

\$485,000

Land Price

\$907,900

Home & Land Package

bed	bath	car
4	2.5	2



Inclusions

- Advantage Series Luxury Standard Inclusions
- Air Conditioning
- Stone Benchtop to Kitchen
- Smeg Kitchen Appliance Package
- Ceramic Floor Tiles from Builders Range to Entry, Kitchen, Meals & Family Room
- Quality Wool Blend Sisal Carpet from Builders Range to Balance of Home
- Alarm System & Remote Controlled Garage Door
- Driveway & Path to Entry
- Roof Sarking
- 'H' Class Slab
- Turf to Front Yard & Rear Yards
- Front Yard Landscaping Only (Includes Front Hedging & One Small Tree)
- Masonry Retaining Walls to Front Yard (Where Applicable)
- Masonry Letterbox & Clothes Line

