

Lot 46

Lot size: 237.8m²

Cheltenham 20 MkII

\$392,900

Home Price

\$410,000

Land Price

\$802,900

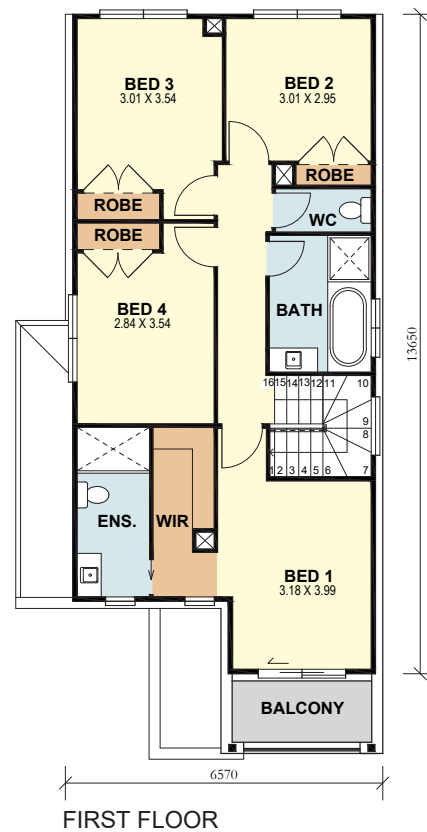
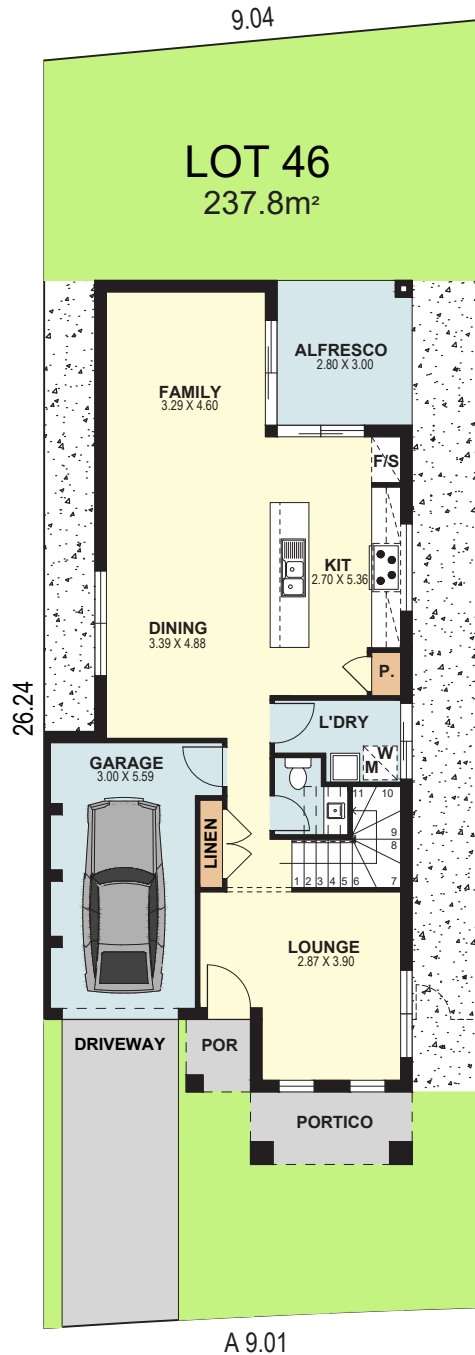
Home & Land Package

bed	bath	car
4	2.5	1



Inclusions

- Kensington Facade
- Advantage Series Luxury Standard Inclusions
- Air Conditioning
- Stone Benchtop to Kitchen
- SMEG Kitchen Appliance Package
- Ceramic Floor Tiles from Builders Range to Entry, Kitchen, Meals & Family room
- Quality Wool Blend Sisal Carpet from Builders Range to Balance of Home
- Alarm System & Remote Controlled Garage Door
- Driveway & Path to Entry
- Roof Sarking
- 'H' Class Slab
- Turf to Front Yard & Rear Yards
- Front Yard Landscaping Only (includes Front Hedging & One Small Tree)
- Masonry Retaining Walls to Front Yard (where applicable)
- Masonry Letterbox & Clothes Line



Lot 47

Lot size: 280.7m²

Cheltenham 20 MkII

\$392,900

Home Price

\$430,000

Land Price

\$822,900

Home & Land Package

bed	bath	car
4	2.5	1



Inclusions

- Broadhurst Facade
- Advantage Series Luxury Standard Inclusions
- Air Conditioning
- Stone Benchtop to Kitchen
- SMEG Kitchen Appliance Package
- Ceramic Floor Tiles from Builders Range to Entry, Kitchen, Meals & Family Room
- Quality Wool Blend Sisal Carpet from Builders Range to Balance of Home
- Alarm System & Remote Controlled Garage Door
- Driveway & Path to Entry
- Roof Sarking
- 'H' Class Slab
- Turf to Front Yard & Rear Yards
- Front Yard Landscaping Only (Includes Front Hedging & One Small Tree)
- Masonry Retaining walls to Front Yard (where applicable)
- Masonry Letterbox & Clothes Line



\$474,900

Home Price

\$425,000

Land Price

\$899,900

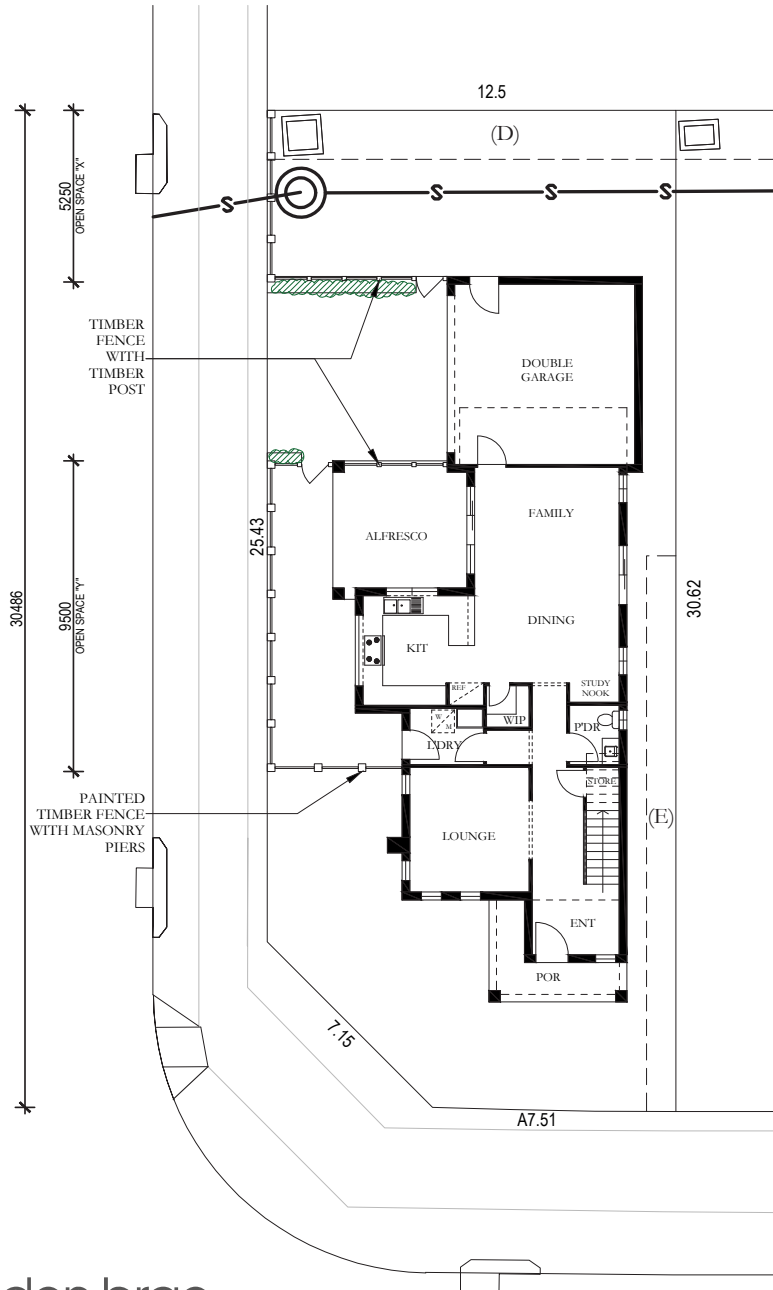
Home & Land Package

bed	bath	car
4	2.5	2

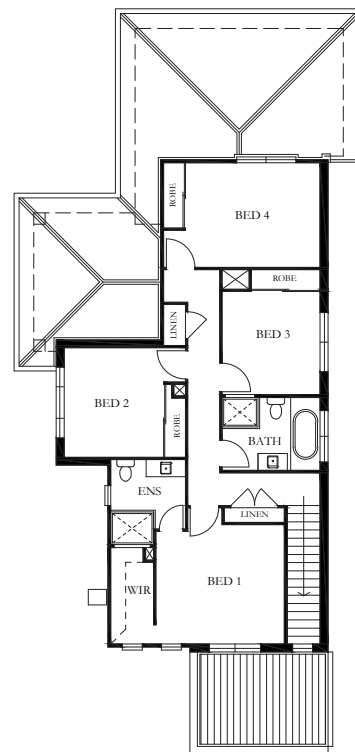


Inclusions

- Custom Facade
- Advantage Series Luxury Standard Inclusions
- Stone Benchtop To Kitchen
- Smeg Kitchen Appliance Package
- Ceramic Floor Tiles From Builders Range To Entry, Kitchen, Meals & Family Room
- Quality Wool Blend Sisal Carpet From Builders Range To Balance Of Home
- Alarm System
- Remote Controlled Garage Door
- Masonry Retaining Walls To Front Yard (where applicable)
- Masonry Letterbox & Clothes Line
- Plain Concrete To Alfresco (where applicable)
- Driveway and Path To Entry
- Roof Sarking
- 'H' Class Slab
- Turf To Front & Rear Yard
- Front Yard Landscaping Only - Includes Front Hedging & One Small Tree
- Ducted Air Conditioning



LOT 6077
369.5m²



 CUSTOM FACADE
WARATAH

Lot 6083 Lot size: 396.9m²

Custom with Kirra Facade

\$334,900

Home Price

\$450,000

Land Price

\$784,900

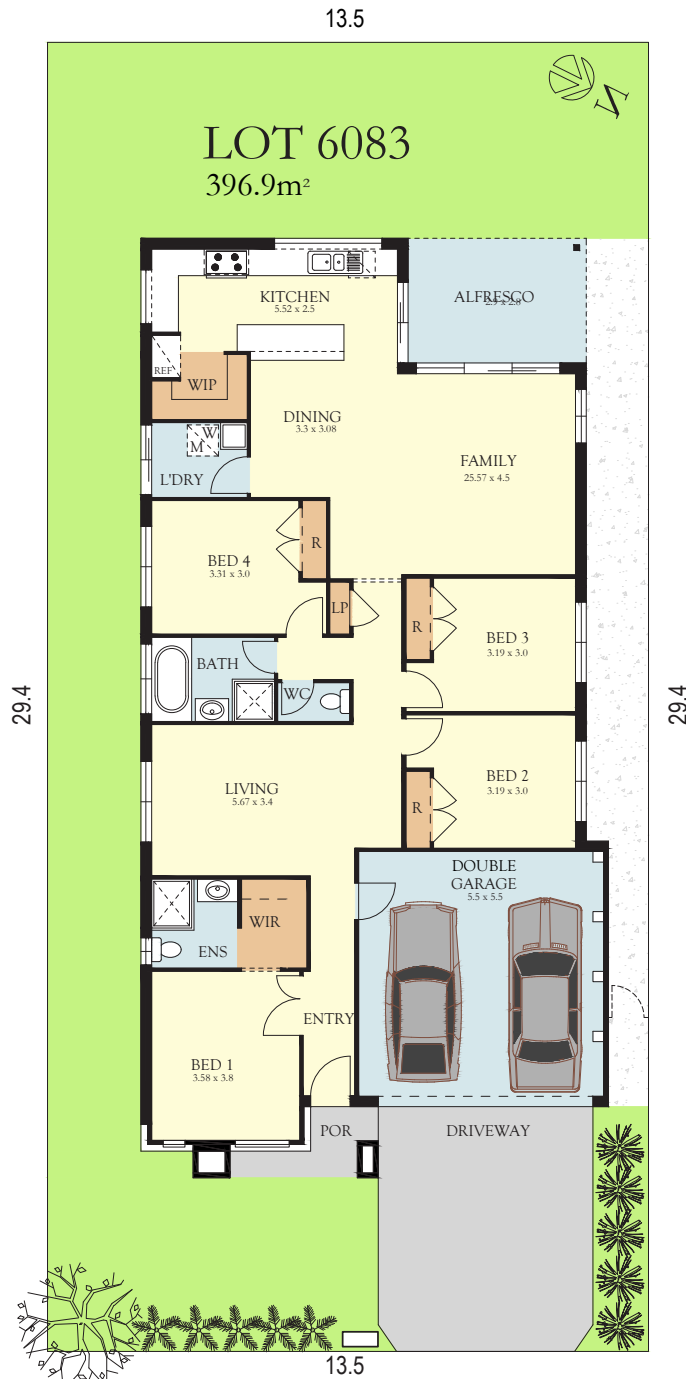
Home & Land Package

bed	bath	car
4	2	2



Inclusions

- Advantage Series Luxury Standard Inclusions
- Stone Benchtop to Kitchen
- Smeg Kitchen Appliance Package
- Ceramic Floor Tiles from Builders Range to Entry, Kitchen, Meals & Family Room
- Quality Wool Blend Sisal Carpet from Builders Range to Balance of Home
- Alarm System
- Remote Controlled Garage Door
- Plain Concrete to Alfresco (Where Applicable)
- Driveway and Path to Entry
- Roof Sarking
- 'H' Class Slab
- Turf to Front Yard
- Front Yard Landscaping Only - Includes Front Hedging & One Small Tree



Lot 6238 Lot size: 356.1m²

Livingstone 16 Mk III

\$328,900

Home Price

\$456,000

Land Price

\$784,900

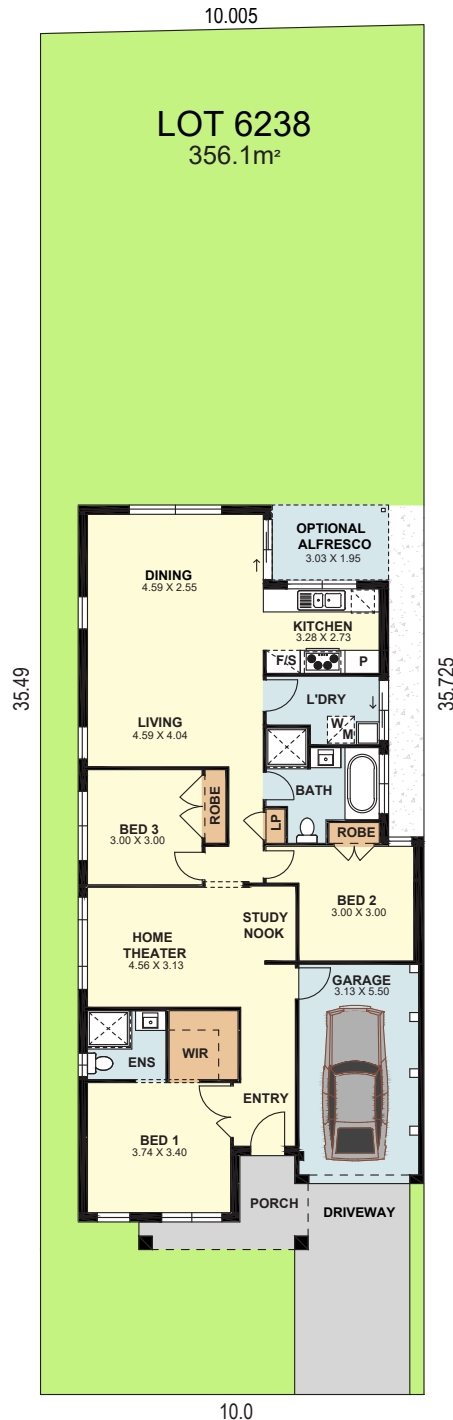
Home & Land Package

bed	bath	car
3	2	1



Inclusions

- Advantage Series Luxury Standard Inclusions
- Air Conditioning
- Stone Benchtop to Kitchen
- Smeg Kitchen Appliance Package
- Ceramic Floor Tiles from Builders Range to Entry, Kitchen, Meals & Family Room
- Quality Wool Blend Sisal Carpet from Builders Range to Balance of Home
- Alarm System & Remote Controlled Garage Door
- Driveway & Path to Entry
- Roof Sarking
- 'H' Class Slab
- Turf to Front Yard & Rear Yards
- Front Yard Landscaping Only (Includes Front Hedging & One Small Tree)
- Masonry Retaining Walls to Front Yard (Where Applicable)
- Masonry Letterbox & Clothes Line



\$344,900

Home Price

\$455,000

Land Price

\$799,900

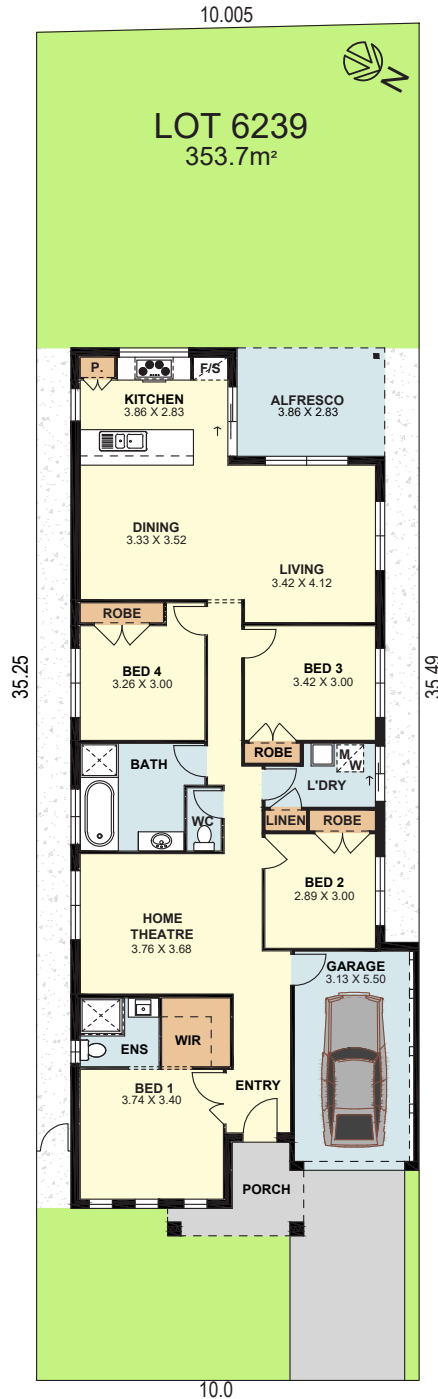
Home & Land Package

bed	bath	car
4	2	1



Inclusions

- Advantage Series Luxury Standard Inclusions
- Air Conditioning
- Stone Benchtop to Kitchen
- Smeg Kitchen Appliance Package
- Ceramic Floor Tiles from Builders Range to Entry, Kitchen, Meals & Family Room
- Quality Wool Blend Sisal Carpet from Builders Range to Balance of Home
- Alarm System & Remote Controlled Garage Door
- Driveway & Path to Entry
- Roof Sarking
- 'H' Class Slab
- Turf to Front Yard & Rear Yards
- Front Yard Landscaping Only (Includes Front Hedging & One Small Tree)
- Masonry Retaining Walls to Front Yard (Where Applicable)
- Masonry Letterbox & Clothes Line



Lot 6243 Lot size: 343.5m²

Ellenbrook 24

\$422,900

Home Price

\$470,000

Land Price

\$892,900

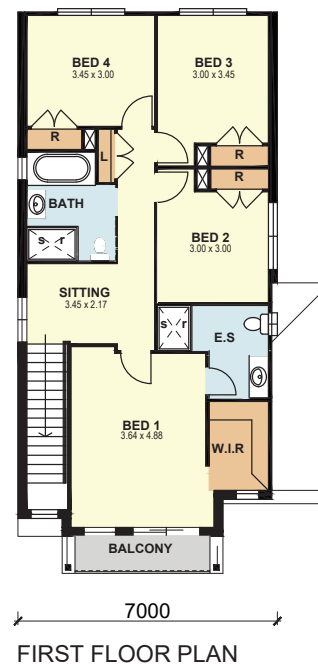
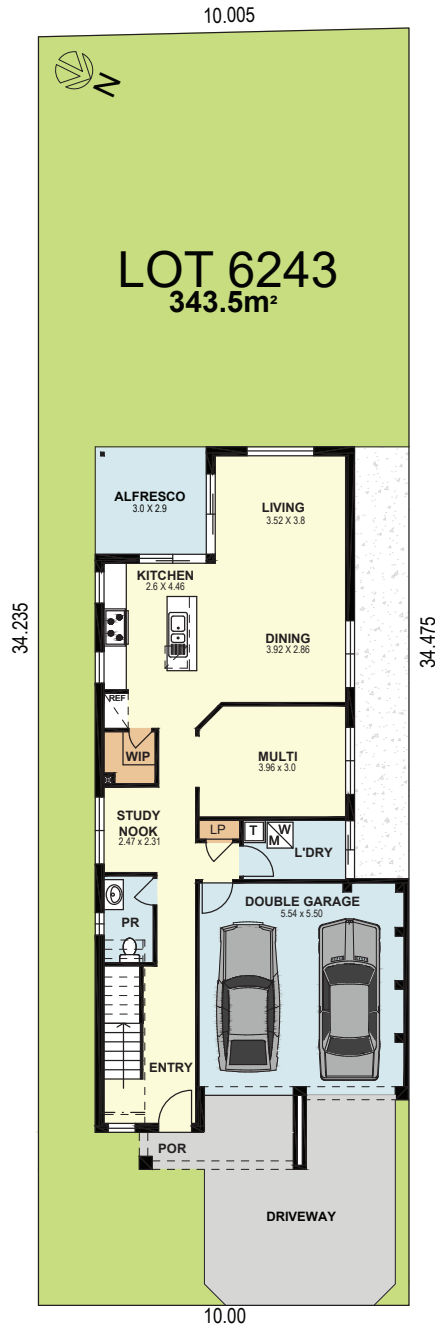
Home & Land Package

bed	bath	car
4	2.5	2



Inclusions

- Advantage Series Luxury Standard Inclusions
- Air Conditioning
- Stone Benchtop to Kitchen
- Smeg Kitchen Appliance Package
- Ceramic Floor Tiles from Builders Range to Entry, Kitchen, Meals & Family Room
- Quality Wool Blend Sisal Carpet from Builders Range to Balance of Home
- Alarm System & Remote Controlled Garage Door
- Driveway & Path to Entry
- Roof Sarking
- 'H' Class Slab
- Turf to Front Yard & Rear Yards
- Front Yard Landscaping Only (Includes Front Hedging & One Small Tree)
- Masonry Retaining Walls to Front Yard (Where Applicable)
- Masonry Letterbox & Clothes Line



\$422,900

Home Price

\$485,000

Land Price

\$907,900

Home & Land Package

bed	bath	car
4	2.5	2



Inclusions

- Advantage Series Luxury Standard Inclusions
- Air Conditioning
- Stone Benchtop to Kitchen
- Smeg Kitchen Appliance Package
- Ceramic Floor Tiles from Builders Range to Entry, Kitchen, Meals & Family Room
- Quality Wool Blend Sisal Carpet from Builders Range to Balance of Home
- Alarm System & Remote Controlled Garage Door
- Driveway & Path to Entry
- Roof Sarking
- 'H' Class Slab
- Turf to Front Yard & Rear Yards
- Front Yard Landscaping Only (Includes Front Hedging & One Small Tree)
- Masonry Retaining Walls to Front Yard (Where Applicable)
- Masonry Letterbox & Clothes Line

