



\$518,900

Home Price

\$625,000

Land Price

\$1,143,900

Home & Land Package

Bed	Bath	Car
5	3.5	2

Inclusions

- 7 Star Luxury inclusions
- Concrete colortop driveway
- Landscaping to front and rear
- Colorbond fencing
- Masonry pier letterbox
- Actron ducted air conditioning
- Deco-Flame Electric Fireplace
- 40mm stone benchtops to kitchen
- High gloss polyurethane kitchen
- Glass kitchen splashback
- Westinghouse 900mm jumbo size cooker & canopy hood
- Soft close kitchen doors & drawers
- Full height tiles to bathroom walls
- Hilton glass frameless shower screens
- Tiled niches to all showers
- Freestanding feature bathtub
- Wall hung Noosa vanities with stone benches
- Porcelain 600mm tiles to main floors
- Luxury cut pile anti-shock carpets
- Valentino glass staircase with Victorian Ash timber (2 storey homes)
- 2.7m high ceilings to the ground floor
- LED lighting throughout the entire home
- Touchscreen modern security alarm system

KAPLAN

Newpark is accessed via Elara Boulevard in Marsden Park

Phone 1300 122 500 newpark.com.au



KAPLAN

Newpark is accessed via Elara Boulevard in Marsden Park
Phone 1300 122 500 newpark.com.au



\$401,900

Home Price

\$725,000

Land Price

\$1,126,900

Home & Land Package

Bed	Bath	Car
4	2	2

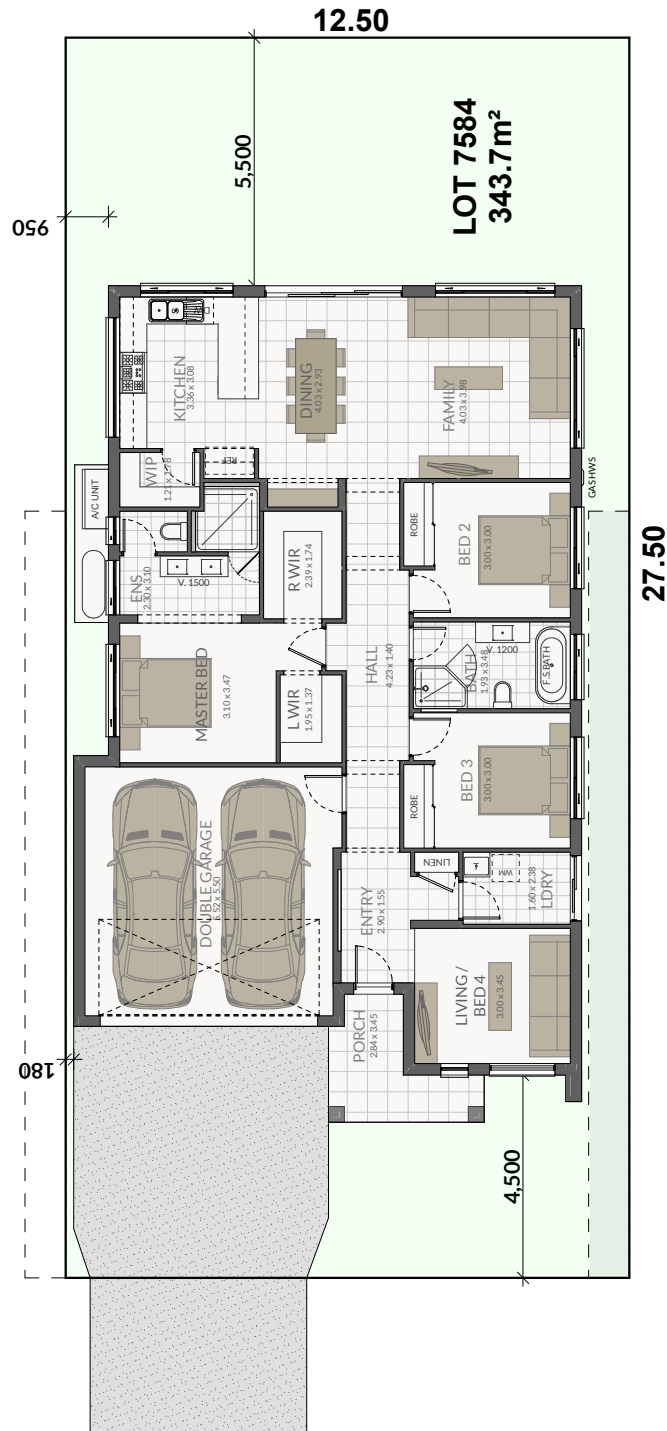
Inclusions

- 7 Star Luxury inclusions
- Concrete colortop driveway
- Landscaping to front and rear
- Colorbond fencing
- Masonry pier letterbox
- Actron ducted air conditioning
- Deco-Flame Electric Fireplace
- 40mm stone benchtops to kitchen
- High gloss polyurethane kitchen
- Glass kitchen splashback
- Westinghouse 900mm jumbo size cooker & canopy hood
- Soft close kitchen doors & drawers
- Full height tiles to bathroom walls
- Hilton glass frameless shower screens
- Tiled niches to all showers
- Freestanding feature bathtub
- Wall hung Noosa vanities with stone benches
- Porcelain 600mm tiles to main floors
- Luxury cut pile anti-shock carpets
- Valentino glass staircase with Victorian Ash timber (2 storey homes)
- 2.7m high ceilings to the ground floor
- LED lighting throughout the entire home
- Touchscreen modern security alarm system

KAPLAN

Newpark is accessed via Elara Boulevard in Marsden Park

Phone 1300 122 500 newpark.com.au





\$552,900

Home Price

\$725,000

Land Price

\$1,277,900

Home & Land Package

Bed	Bath	Car
5	3	2

Inclusions

- 7 Star Luxury inclusions
- Concrete colortop driveway
- Landscaping to front and rear
- Colorbond fencing
- Masonry pier letterbox
- Actron ducted air conditioning
- Deco-Flame Electric Fireplace
- 40mm stone benchtops to kitchen
- High gloss polyurethane kitchen
- Glass kitchen splashback
- Westinghouse 900mm jumbo size cooker & canopy hood
- Soft close kitchen doors & drawers
- Full height tiles to bathroom walls
- Hilton glass frameless shower screens
- Tiled niches to all showers
- Freestanding feature bathtub
- Wall hung Noosa vanities with stone benches
- Porcelain 600mm tiles to main floors
- Luxury cut pile anti-shock carpets
- Valentino glass staircase with Victorian Ash timber (2 storey homes)
- 2.7m high ceilings to the ground floor
- LED lighting throughout the entire home
- Touchscreen modern security alarm system

KAPLAN

Newpark is accessed via Elara Boulevard in Marsden Park

Phone 1300 122 500 newpark.com.au

